



Baltimore Wharf, E14

£560 Per week

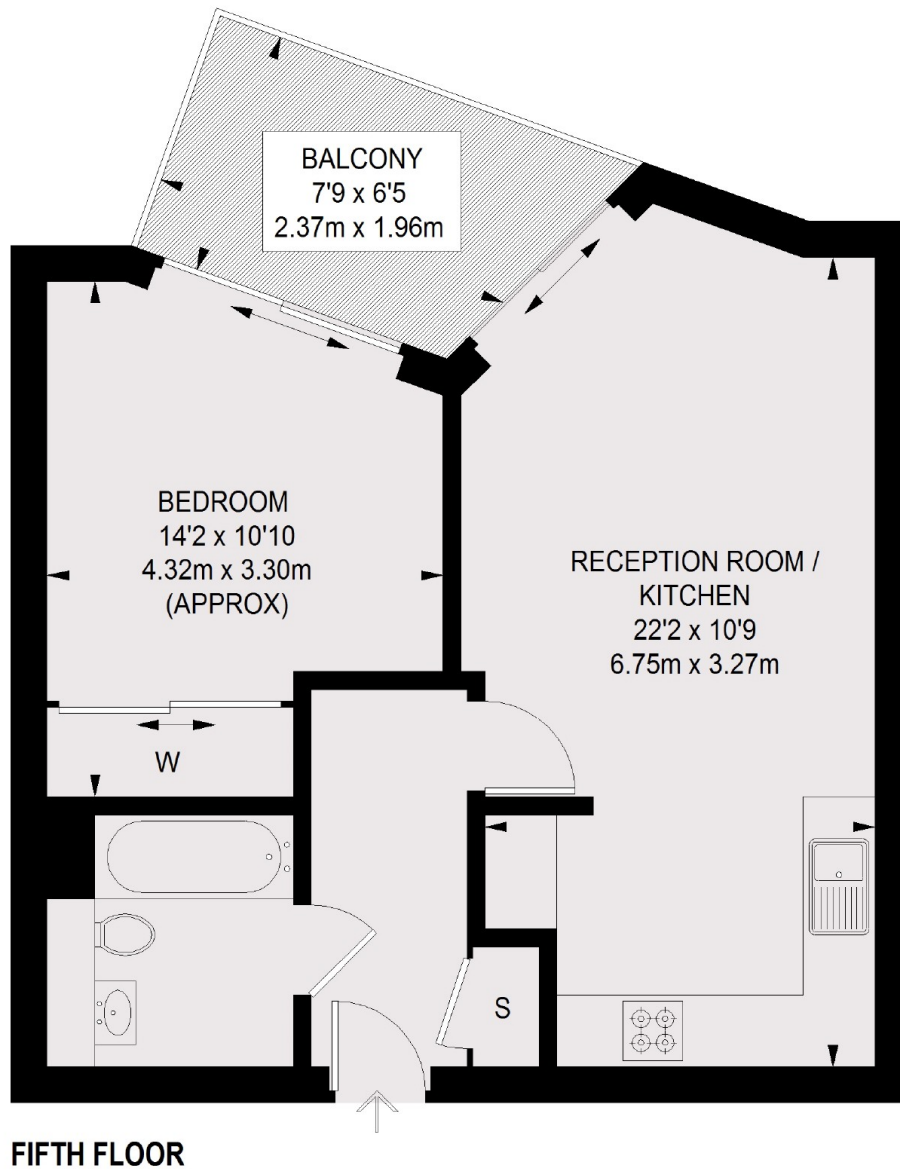
An exceptionally large one bedroom apartment on the fifth floor of this dockside development. This modern apartment has an open plan reception room, courtyard views and a balcony stretching the length of the apartment.

Baltimore Wharf Is moments away from the bars and restaurants of South Quay, including the popular Lotus Floating Restaurant.

Features

- One Bedroom
- Fifth Floor
- Exceptionally Large
- Wooden Flooring
- Balcony
- Residents Leisure Facilities

Baltimore Wharf, London, E14



TOTAL APPROX. FLOOR AREA 486 SQ. FT. (45.17 SQ. M.)
BALCONY 71 SQ. FT. (6.62 SQ. M.)