



Fairmont Avenue, E14

£576 Per week

A large two bedroom apartment on third floor of this sought after development. This river facing apartment has floor to ceiling windows, wooden flooring, a private balcony and on-site gym.

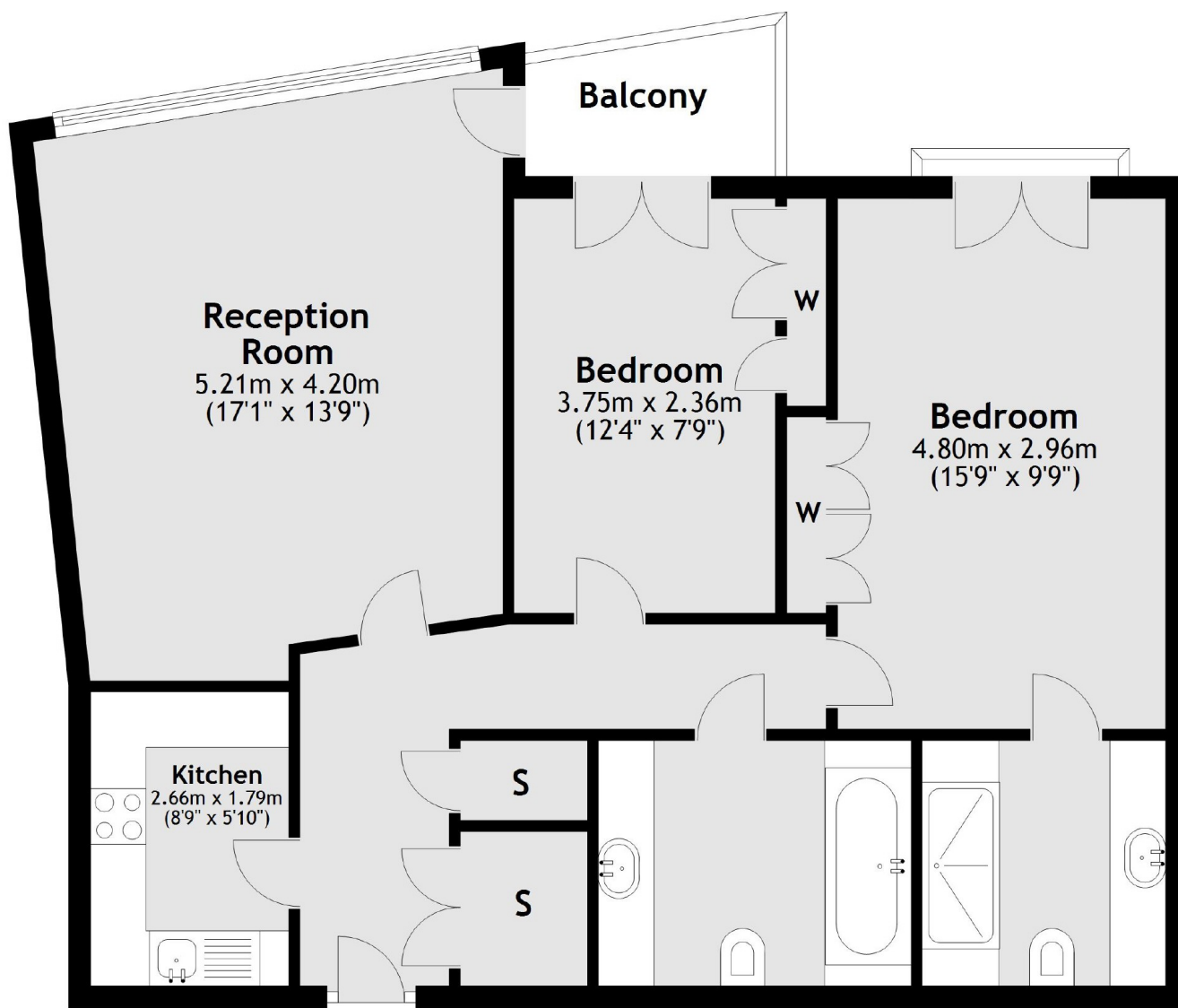
New Providence Wharf is moments from the shops, bars and restaurants of Canary Wharf, including the popular Japanese grill Roka.

Features

- Two Bedrooms
- Two Bathrooms
- Wooden Flooring
- Balcony
- River Views
- Residents Leisure Facilities

Fairmont Avenue, London, E14

Third Floor



Total area: approx. 73.7 sq. metres (793.0 sq. feet)