



Wards Place, E14
£1,800,000

Dexters



Wards Place, E14

This rare two bedroom apartment is offered to the market on the fiftieth floor of this prestigious development, The Wardian. This beautiful apartment has been furnished to a high standard with an open plan reception room, private balcony and underground parking.

This apartment is ideally located for anyone working within Canary Wharf or The City and it is offered to the market on a chain free basis. Accommodation comprises of entrance hall leading to open plan reception room / kitchen area with access to balcony.

The master bedroom has access to an en-suite bathroom and both bedrooms share an abundance of light as well as throughout the whole property. Residents also have access to leisure facilities and concierge service.

The Wardian is within walking distance of the shops, bars and restaurants of Canary Wharf. Many transport connections can be also be reached by foot in just few minutes. South Quay, Canary Wharf Underground, Heron Quay (DLR), Canary Wharf Bus (south), and the Crossrail.

Features

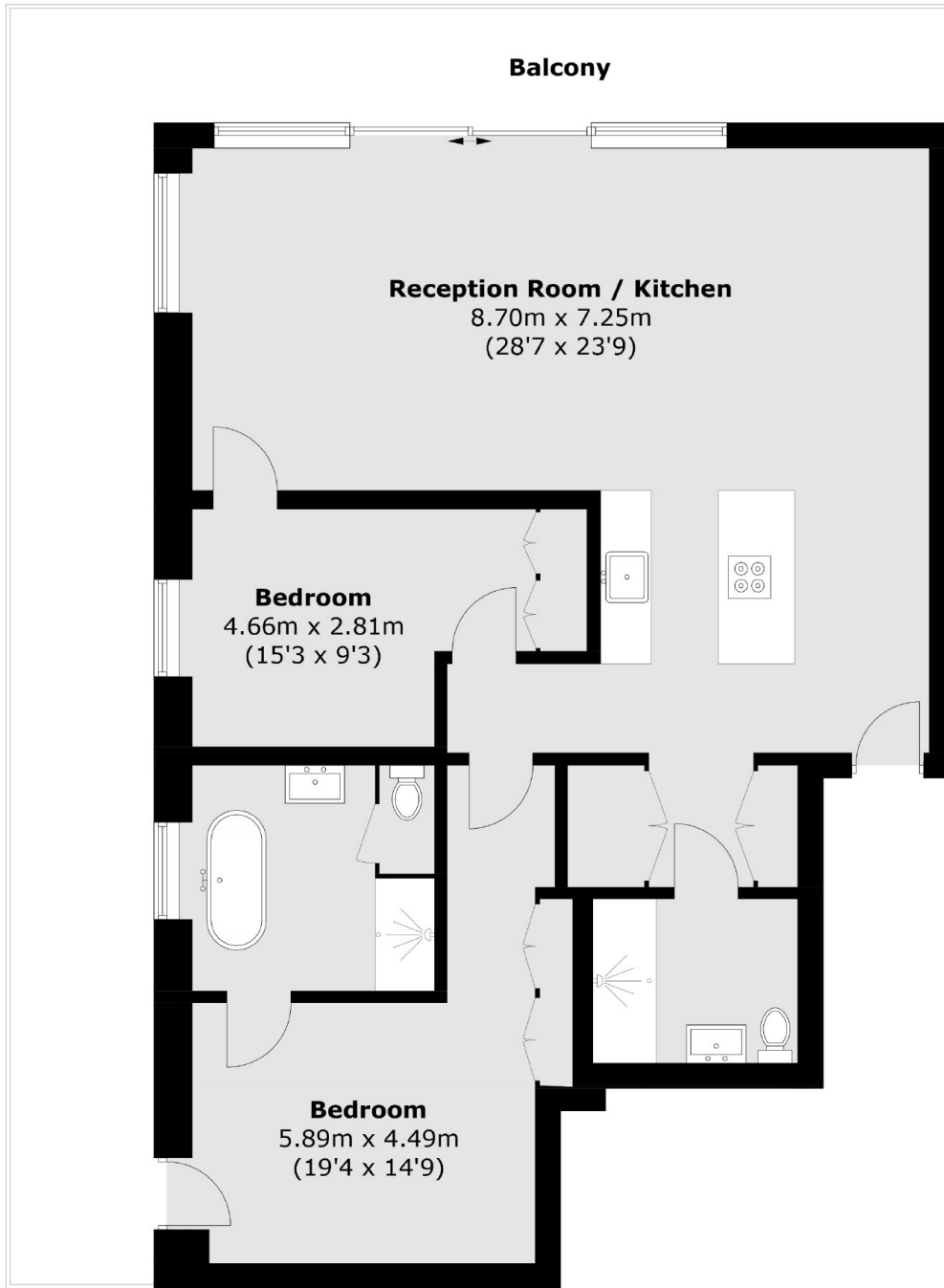
Fiftieth Floor
Two Bedroom
1071.08 Sq.Ft
412.3 Sq.Ft Balcony
City and River Views
Central Canary Wharf Location







Wards Place,
London, E14



Fiftieth Floor

Total area (approx.): 99.5 sq. m (1,071.08 sq. ft)
Balcony: 38.3 sq. m (412.3 sq. ft)