



## Burrells Wharf Square, E14

£575,000

Offering over 1,000 Sq.Ft of ample living space is this is this two bedroom home located in the sought after Burrells Wharf development.

Features to include open plan reception area, large roof terrace, residents leisure facilities, allocated parking, concierge service and a Share of Freehold.

Burrells Wharf is 0.3 Miles from Island Gardens DLR Station which provides good links to Canary Wharf, The City and Greenwich.

### Features

Guide Price £575,000-  
£600,000

1005.3 Sq.Ft

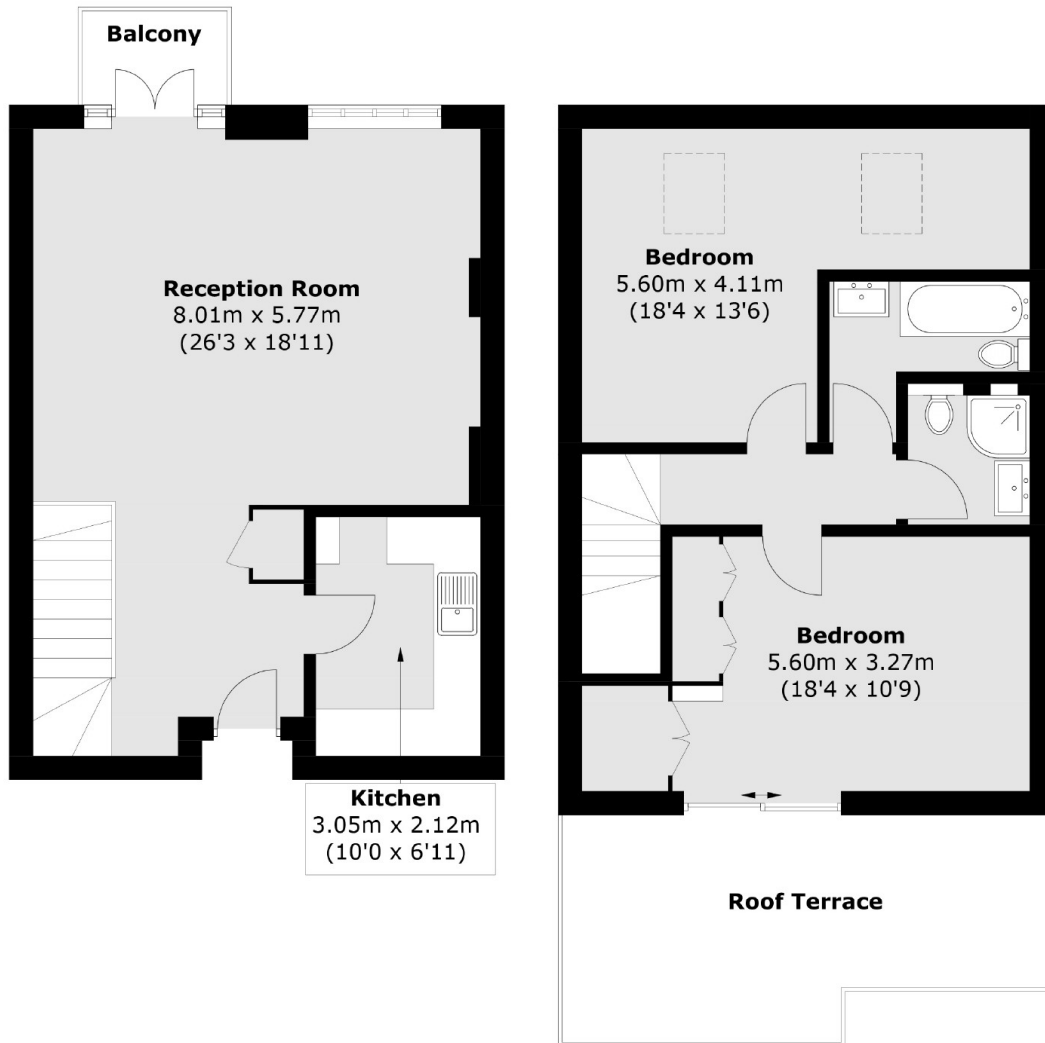
Private Balcony

Roof Terrace 197 Sq.Ft

Allocated Parking

No Onward Chain

# Burrells Wharf Square, London, E14



**Third Floor**

**Fourth Floor**

Total area (approx.): 93.4 sq. m (1,005.3 sq. ft)  
Balcony / Roof Terrace (approx.): 18.3 sq. m (197.0 sq. ft)