



Jamestown Way, E14

£519 Per week

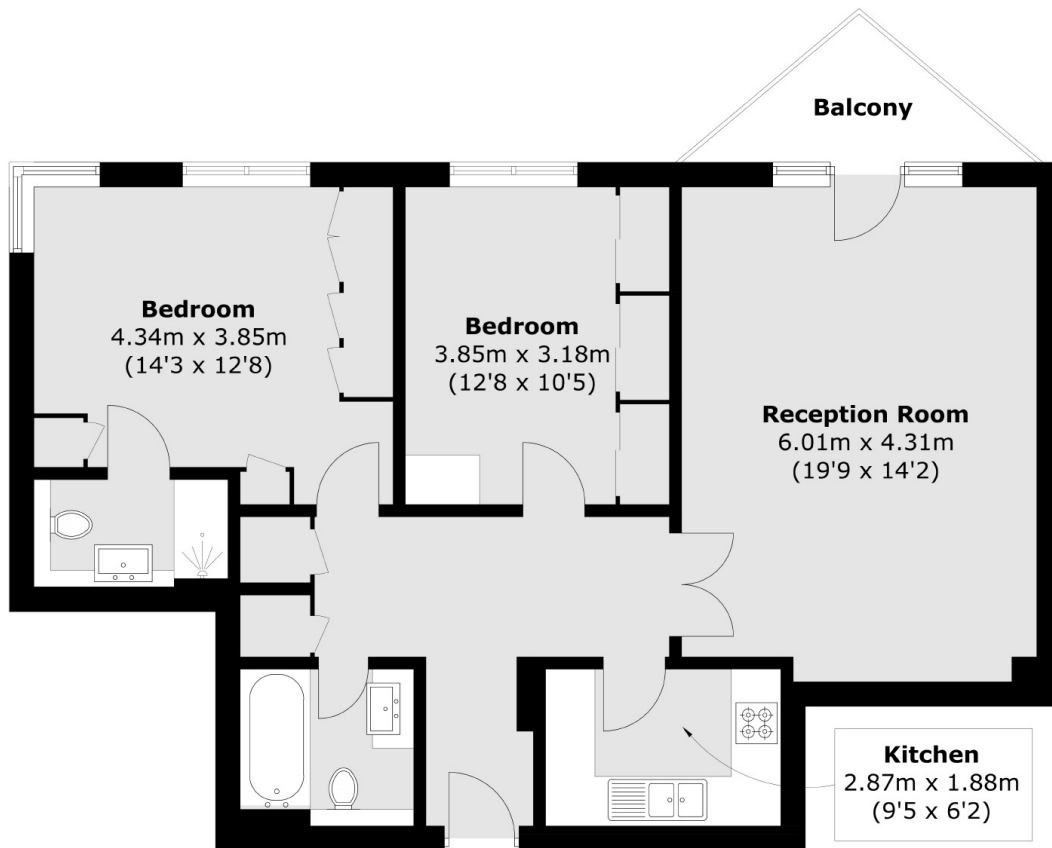
A large mid floor partial river facing two bedroom two bathroom apartment. The property benefits from wood flooring, separate fitted kitchen, private riverfront balcony and porter access.

Cape Henry Court is situated just 0.2 miles from East India DLR which offers access to East London and The City.

Features

- Two Bedrooms
- Two Bathrooms
- Partial River Facing
- Porter Access
- Unfurnished
- Separate Living Room

Jamestown Way, London, E14



Total area (approx.): 81.7 sq. m (879.4 sq. ft)
Balcony : 3.8 sq. m (40.9 sq. ft)