



Prestons Road, E14

£300,000

A bright one bedroom apartment on the eleventh floor of this portered development. This modern apartment has an open plan reception room, wooden flooring and a balcony with breath taking views.

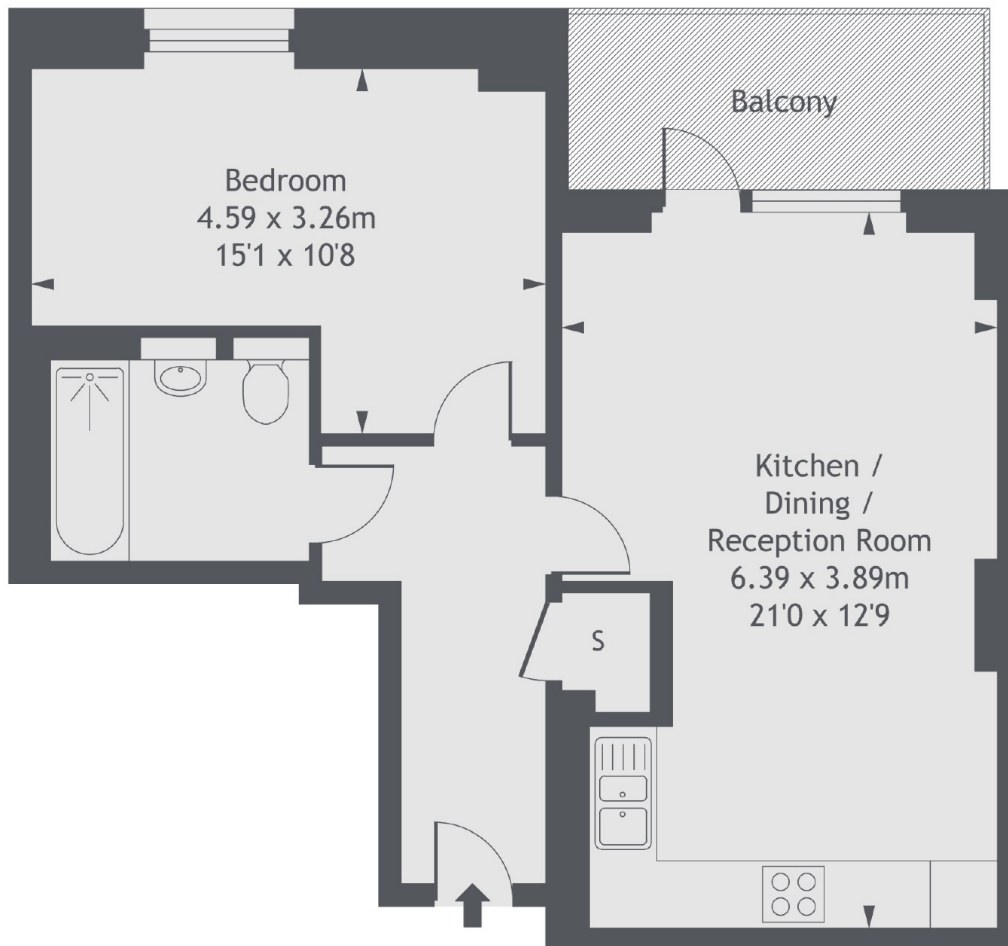
Wharfside Point has great transport links being under three quarters of a mile from Canary Wharf and there are three DLR stations within a third of a mile away.

Features

- One Bedroom
- One Bathroom
- Eleventh Floor
- Private Balcony
- Canary Wharf Views
- Guide Price £300,000-£325,000

Prestons Road,
London, E14

Eleventh Floor



Gross Internal Area 529 sq ft (49.17 sq m)

Balcony Area 63 sq ft (5.82 sq m)