



## Crews Street, E14

£600,000

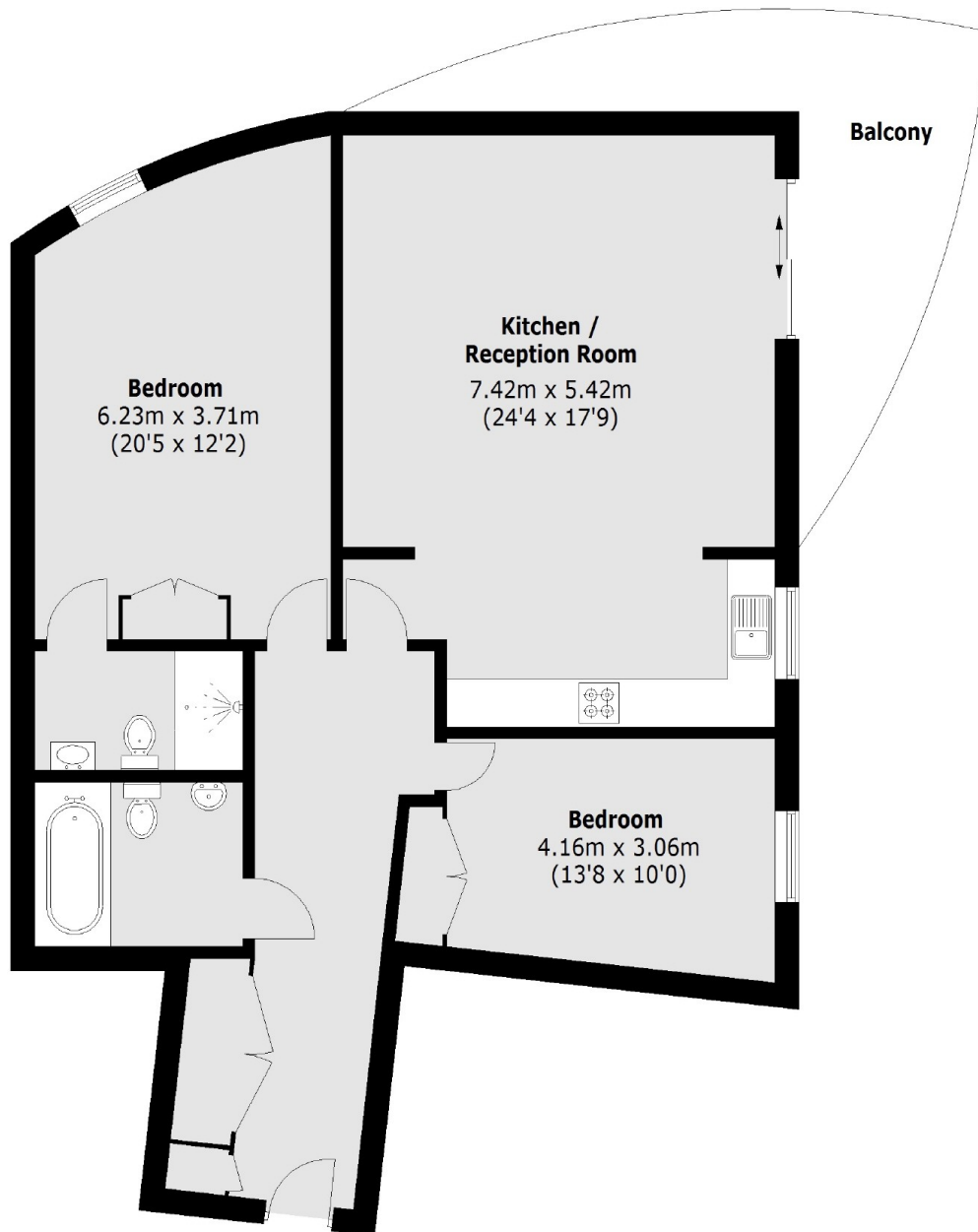
Offering 1,081.3 Sq.Ft of ample living space is this two bedroom home located in the sought after Odyssey Development. Features to include 162 Sq.Ft private balcony with river views, allocated parking, residents gym and concierge service.

Galaxy Building is situated within minutes walking distance to Canary Wharf and many of the elite shops, bars dock-side attractions and restaurants of Canary Wharf and West India Quay. Local transport links include Mudchute & Crossharbour (DLR) & Canary Wharf Station (Jubilee Line, Cross Rail & DLR) within a short walking distance as well as many quick routes into and out of London for the motorist.

### Features

Guide Price-£600,000-  
£650,000  
162 Sq.Ft Balcony  
Two Double Bedrooms  
Allocated Parking  
Residents Gym  
Concierge Service

Crews Street,  
London, E14



Total area (approx.): 100.46 sq. m (1,081.3 Sq. ft)  
Balcony: 15.17 sq. m (163.2 Sq. ft)

**Dexters**

Canary Wharf  
39 Westferry Road  
London  
E14 8JH  
Sales  
020 7517 1199

Energy Rating: B. We aim to make our particulars both accurate and reliable. However they are not guaranteed; nor do they form part of an offer or contract. If you require clarification on any points then please contact us, especially if you're traveling some distance to view. Please note that appliances and heating systems have not been tested and therefore no warranties can be given as to their good working order.

 **RICS** | Regulated  
Estate Agent  
and Letting Agent

[dexters.co.uk](http://dexters.co.uk)