

Dingle Gardens, E14

£585,000

A split level, two bed, freehold house. The property is well located for transport links back into Canary Wharf and the City but also comes with off-street parking and a large private garden.

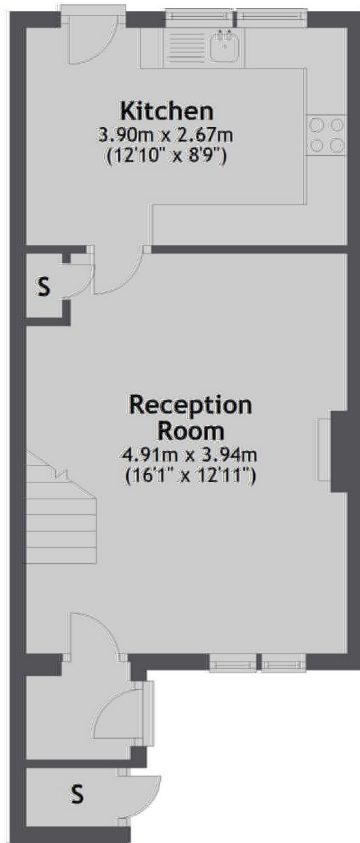
Located just North of Canary Wharf the house is under half a mile to both Poplar DLR and West India Quay DLR.

Features

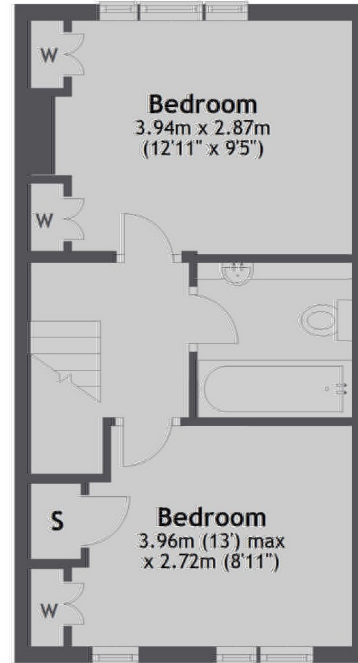
- Two Double Bedrooms
- Freehold
- Off Street Parking
- Private Cul-De-Sac
- Garden
- Split Level

Dingle Gardens, London, E14

Ground Floor



First Floor



Total area: approx. 63.2 sq. metres (680.0 sq. feet)