



Chrisp Street, E14

£385,000

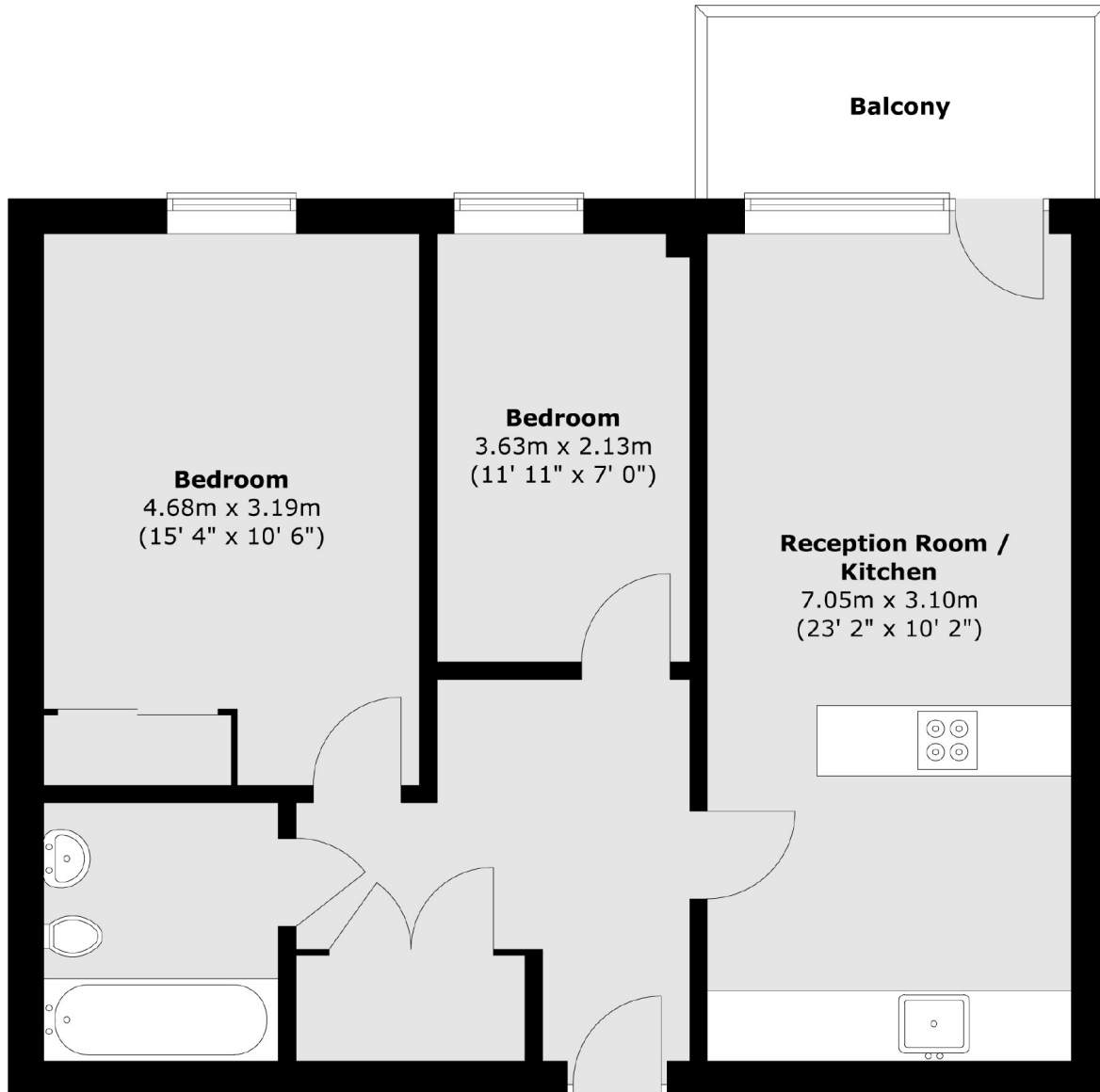
Guide Price £385 000-£410,000. Presented in immaculate condition and located on the fourth floor, this two bedroom home within E14 features a private balcony, entry phone system, lift access, communal roof terrace and bike storage.

Moseley Lodge is located directly opposite Langdon Park DLR Station providing good transport links to Canary Wharf (6 minutes) and the City (18 minutes to Bank).

Features

Guide Price £385,000-£410,000
Two Bedrooms
Private Balcony
Open Plan Reception
Fourth Floor
Lift Access

Chrisp Street,
London, E14



Total area (approx.) : 62 sq. m (667 sq. ft)
Total balcony area (approx.) : 4.8 sq. m (52 sq. ft)

Dexters

Canary Wharf
39 Westferry Road
London
E14 8JH
Sales
020 7517 1199

Energy Rating: B. We aim to make our particulars both accurate and reliable. However they are not guaranteed; nor do they form part of an offer or contract. If you require clarification on any points then please contact us, especially if you're traveling some distance to view. Please note that appliances and heating systems have not been tested and therefore no warranties can be given as to their good working order.

 **RICS** Regulated
Estate Agent
and Letting Agent

dexters.co.uk