

## Meridian Place, E14

£650,000

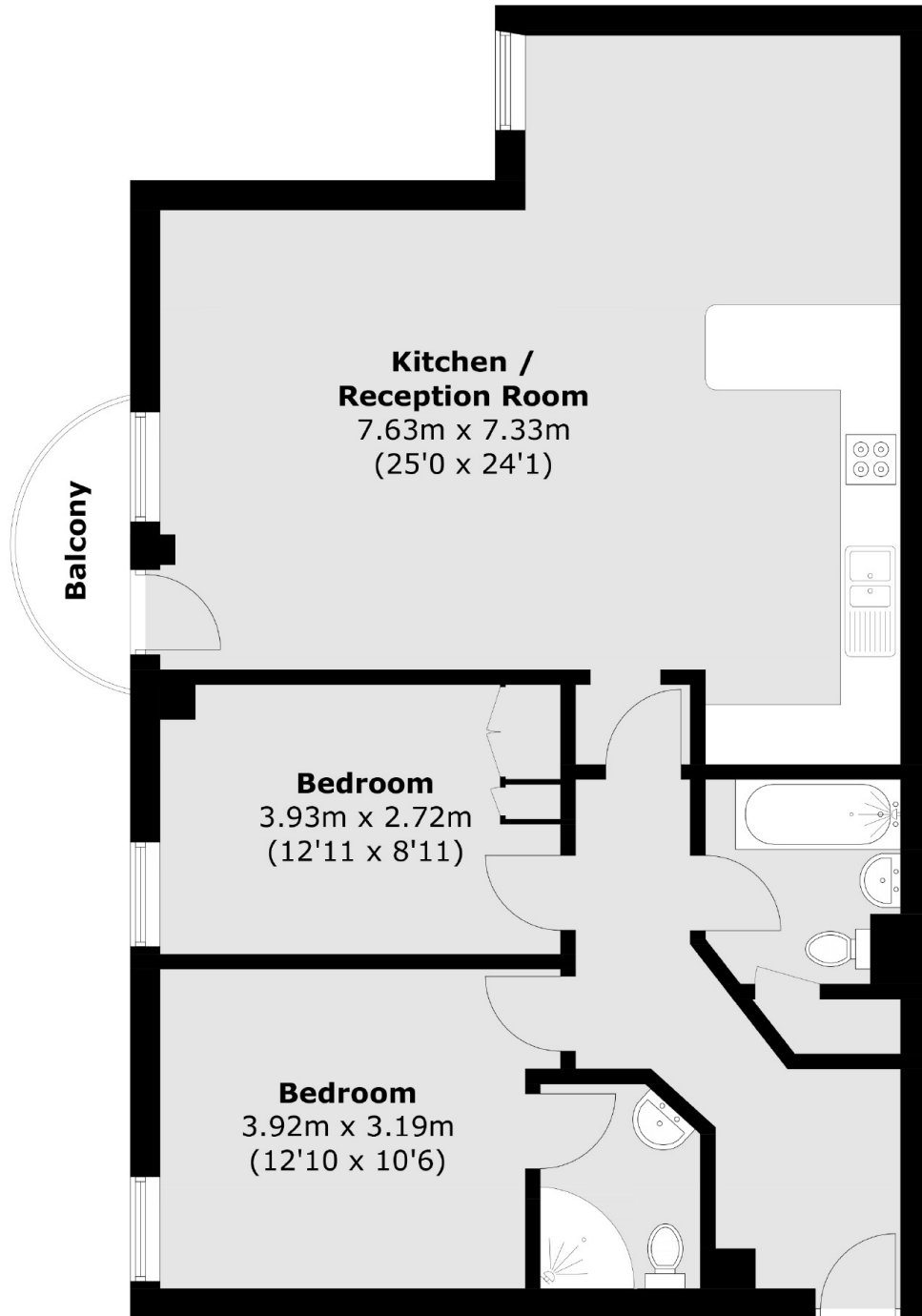
Offering over 950 Sq.Ft of ample living space is this two bedroom home ideally located for Canary Wharf. Features to include re-fitted kitchen, open plan reception with access to balcony, private balcony with dock and Canary Wharf views, allocated parking and no onward chain.

Meridian Place is located at South Quay within close distance to Canary Wharf. Offering a selection of restaurants, bars, shops and supermarkets as well as the Jubilee Line and DLR Stations for good links to the City.

### Features

950 Sq.Ft  
Allocated Parking  
Two Bathrooms  
Canary Wharf and Dock Views  
Private Balcony  
Guide Price £650,000-  
£700,000

Meridian Place,  
London, E14



Total area (approx.): 86.6 sq. m (932.1 sq. ft)  
Balcony: 2.5 sq. m (26.9 sq. ft)