



St. Davids Square, E14

£726 Per week

A three bedroom two bathroom apartment with two private balconies both overlooking the River Thames. The property benefits from floor to ceiling windows, built in storage and residents leisure facilities.

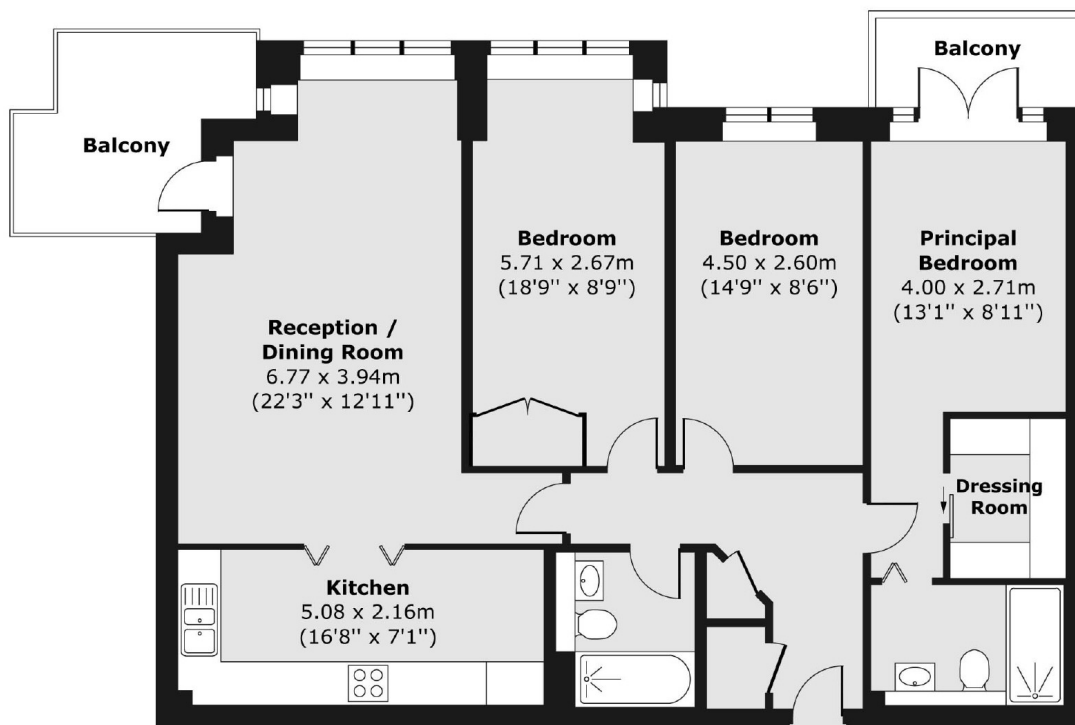
St. Davids Square is a private development moments from the The Docklands Sailing Centre and the amenities of Canary Wharf.

Features

- Three Bedrooms
- Two Bathrooms
- Recently Refurbished
- Wooden Flooring
- River Views
- Allocated Parking

St. Davids Square, London, E14

Second Floor



Total area (approx.) 101.91 sq. m (1,097 sq. ft)

Balcony areas (approx.) 11.00 sq. m (118 sq. ft)