



South Quay Square, E14 £750,000

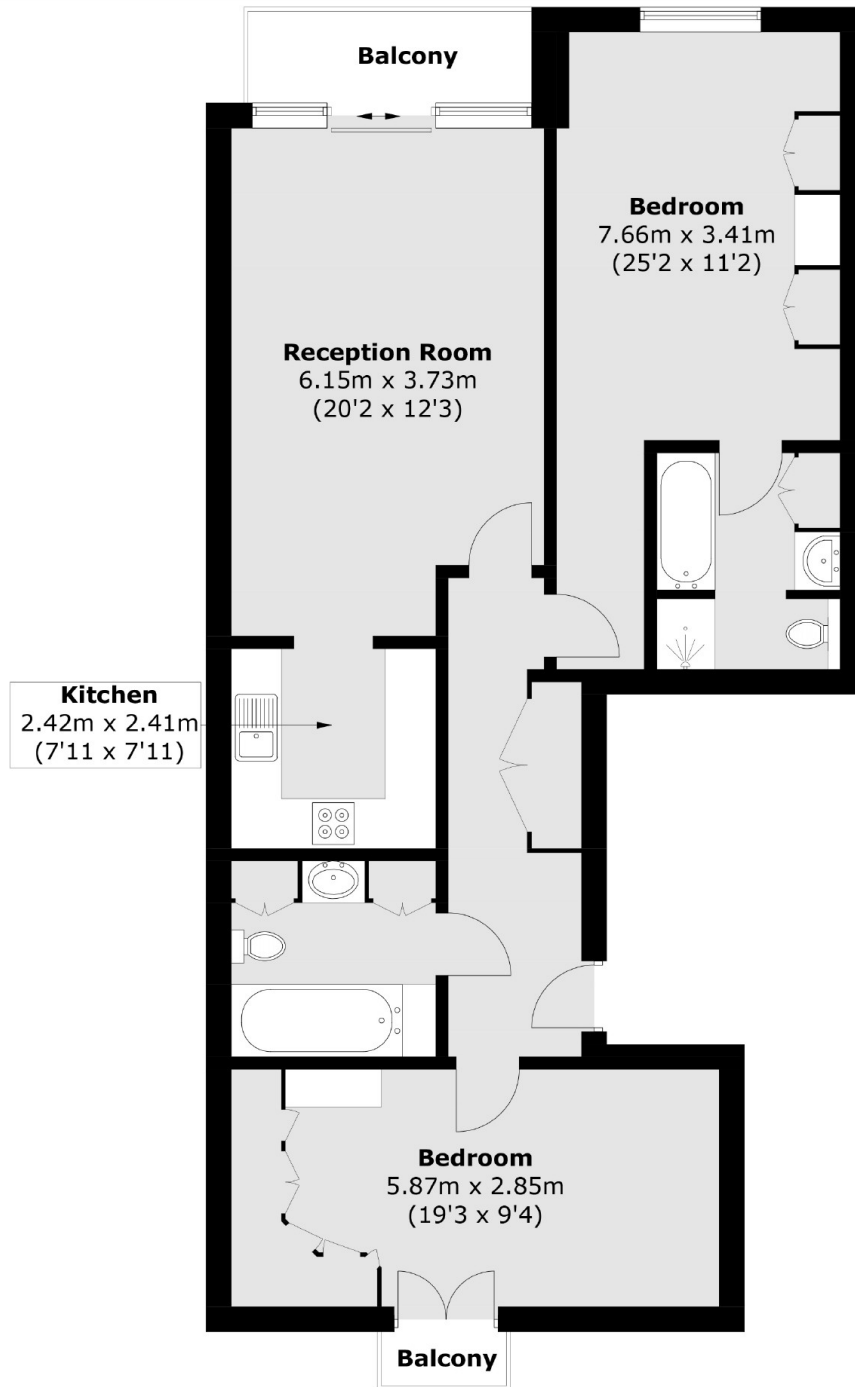
Offering 952 Sq.Ft of ample living space is this two bedroom home with dock and Canary Wharf views. Features to include two bathrooms, additional Juliette balcony off the master bedroom, concierge service, residents leisure facilities to include gym and swimming pool.

Discovery Dock is ideally located for Canary Wharf. The Jubilee and Elizabeth lines are just a short distance away which provides for good links to The City.

Features

Canary Wharf Location
952.6 Sq.Ft
50 Sq.Ft Balcony
Dock And Canary Wharf Views
24 hour Concierge
Residents Leisure Facilities

South Quay Square, London, E14



Total area (approx.): 88.5 sq. m (952.6 sq. ft)
Balcony area : 4.7 sq. m (50.1 sq. ft)