



Leven Road, E14 £650,000

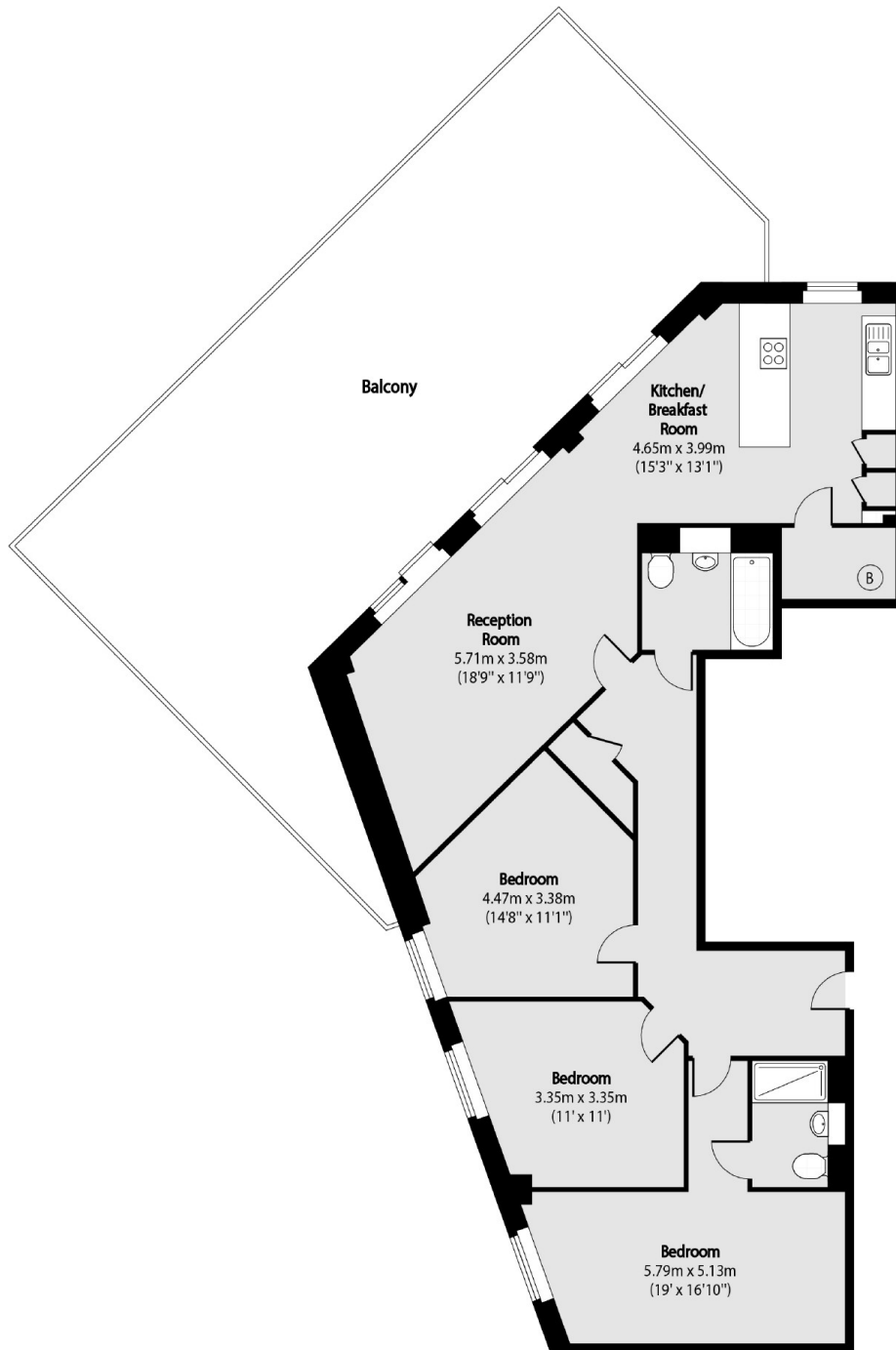
A three bedroom penthouse apartment offering 1231 Sq.Ft ample living space and additional 840 Sq.Ft terrace with far reaching views of Canary Wharf and the City. Features to include open plan reception room with access to the terrace two bathroom, secure allocated parking and concierge service.

Cityview Point is a 0.25 mile from Langdon Park DLR station which offer good links to the City and Canary Wharf.

Features

- 1231 Sq.Ft
- 840 Sq.Ft Terrace
- 10th Floor Penthouse
- Allocated Parking
- Concierge Service
- No Onward Chain

Leven Road, London, E14



Total area (approx): 114.36 sq m (1231 sq. ft)

Balcony total area (approx): 78.04 sq m (840 sq. ft)

Dexters

Canary Wharf
39 Westferry Road
London
E14 8JH
Sales
020 7517 1199

Energy Rating: B. We aim to make our particulars both accurate and reliable. However they are not guaranteed; nor do they form part of an offer or contract. If you require clarification on any points then please contact us, especially if you're traveling some distance to view. Please note that appliances and heating systems have not been tested and therefore no warranties can be given as to their good working order.

 **RICS** | Regulated
Estate Agent
and Letting Agent

dexters.co.uk