

Tweed Walk, E14

£325,000

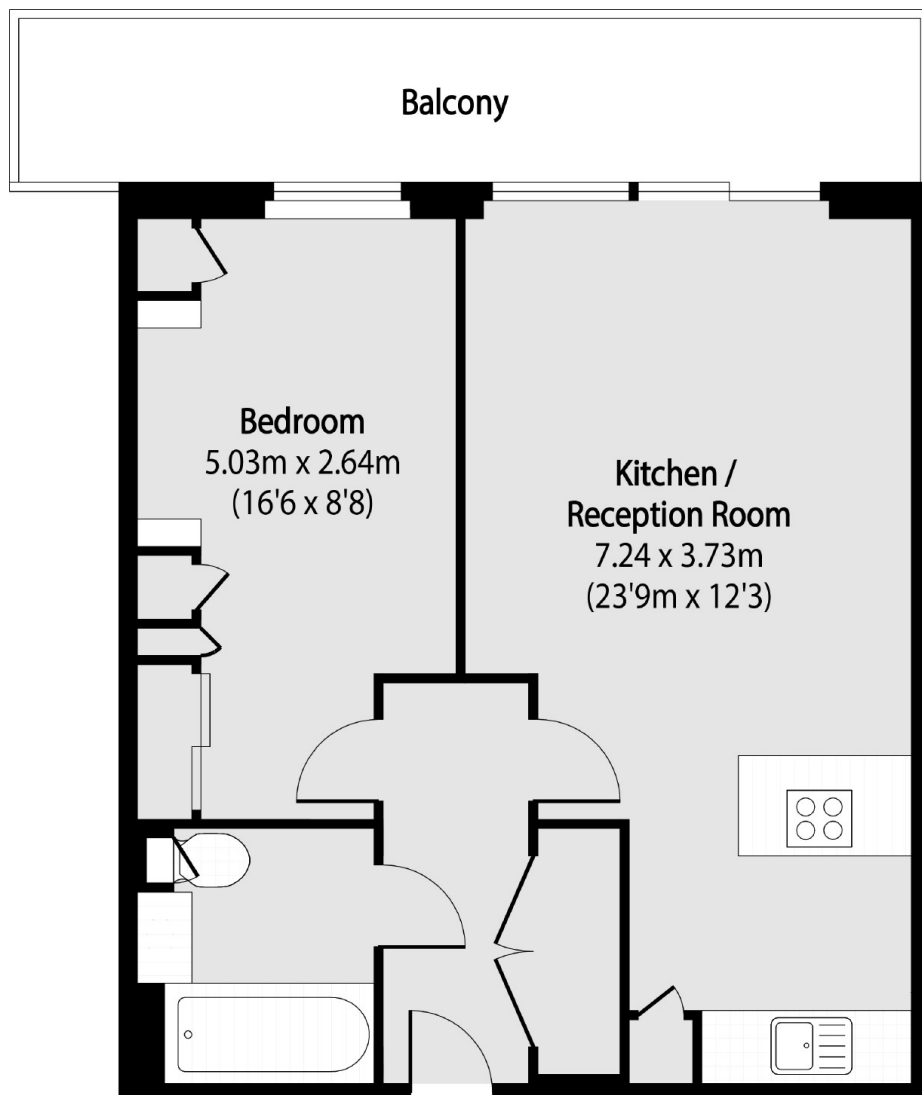
A one bedroom home with amazing views of the Limehouse Cut Canal offered to the market on a chain free basis. Features to include open plan kitchen, wooden flooring, bespoke fitted bedroom furniture, double width balcony and no onward chain.

Yeoman Court is a modern development that is located within close proximity to Bromley-by-Bow station which offers easy access into the City and Canary Wharf.

Features

507 Sq.Ft
Water Views
Double Width Balcony 111 sq.ft
Day Concierge
EWS1 Compliant
Guide Price £325,000-£350,000

Tweed Walk,
London, E14



Total area (approx): 47.10 sq m (507 sq. ft)

Balcony total area (approx): 10.31 sq m (111 sq. ft)

Dexters

Canary Wharf
39 Westferry Road
London
E14 8JH
Sales
020 7517 1199

Energy Rating: B. We aim to make our particulars both accurate and reliable. However they are not guaranteed; nor do they form part of an offer or contract. If you require clarification on any points then please contact us, especially if you're traveling some distance to view. Please note that appliances and heating systems have not been tested and therefore no warranties can be given as to their good working order.

 **RICS** | Regulated
Estate Agent
and Letting Agent

dexters.co.uk