



## Hertsmere Road, E14

**£784** Per week

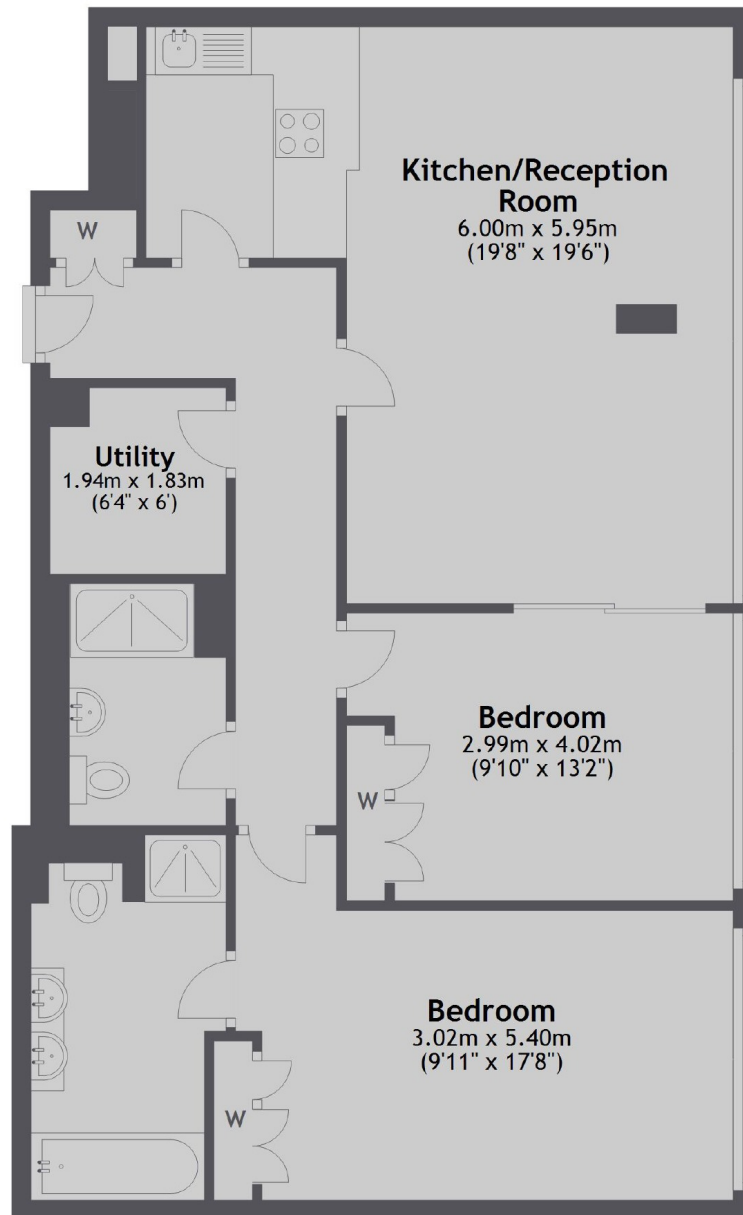
A large two bedroom apartment on the nineteenth floor of this sought after development. This bright apartment is perfect for entertaining with its open plan reception room, wooden flooring and breath taking views.

West India Quay has an unrivalled dock-side location and is moments from the shops, bars and restaurants of Canary Wharf.

### Features

- Two Bedrooms
- Two Bathrooms
- Nineteenth Floor
- Wooden Flooring
- City Views
- Concierge

# Hertsmere Road, London, E14



Total area: approx. 85.7 sq. metres (922.0 sq. feet)

**Dexters**

Canary Wharf  
39 Westferry Road  
London  
E14 8JH  
Lettings  
0207 517 1190

Energy Rating: C. We aim to make our particulars both accurate and reliable. However they are not guaranteed; nor do they form part of an offer or contract. If you require clarification on any points then please contact us, especially if you're traveling some distance to view. Please note that appliances and heating systems have not been tested and therefore no warranties can be given as to their good working order.

 **RICS** Regulated  
Estate Agent  
and Letting Agent

[dexters.co.uk](http://dexters.co.uk)