



Midship Point, E14

£300,000

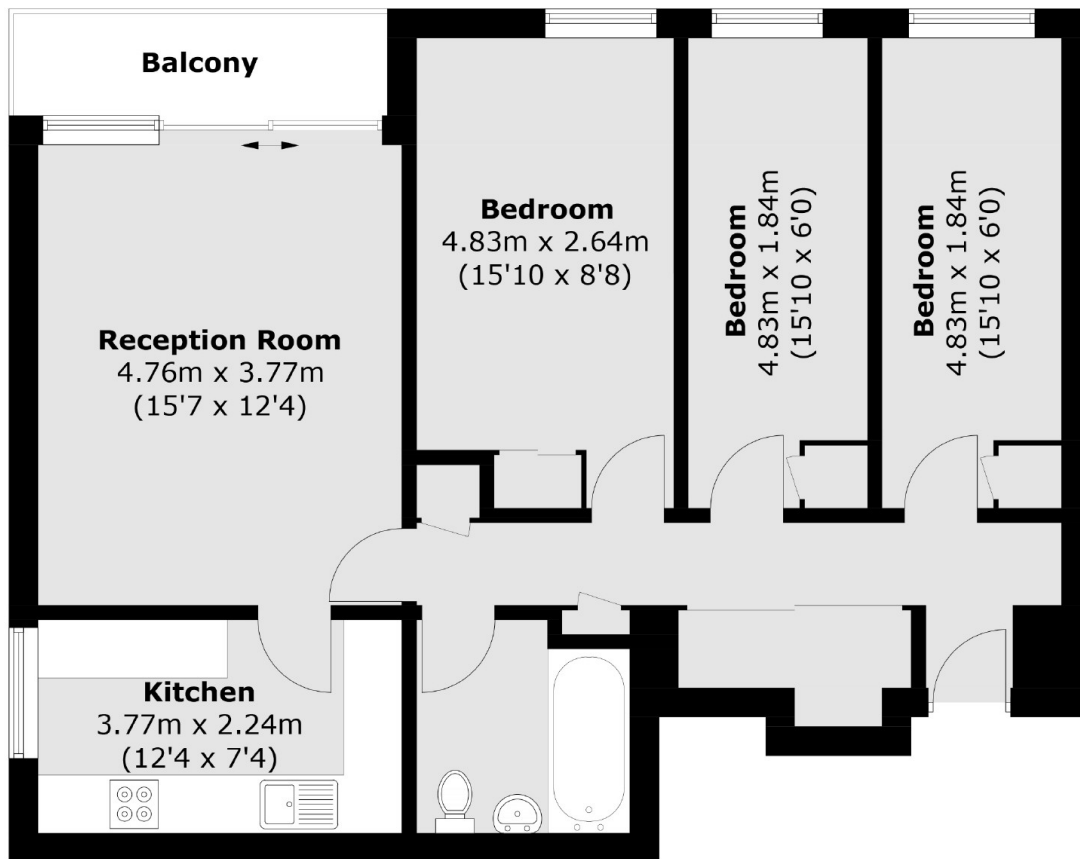
Located on the 18th floor with City and River views is this three bedroom apartment located in E14. Features to include private balcony, entry phone access, lift and day porter.

Canary Wharf is approximately a 10 minute walk offering endless restaurants, bars, shopping facilities and transport links including Jubilee & Elizabeth Lines, Cross Rail, DLR stations.

Features

822 Sq.Ft
Three Bedrooms
Low Service Charge
City and River Views
Day Porter
Guide Price £300,000-
£325,000

Midship Point, London, E14



Total area (approx.): 76.4 sq. m (822.4 sq. ft)
Balcony: 4.0 sq. m (43.0 sq. ft)