



Newport Avenue, E14 £525,000

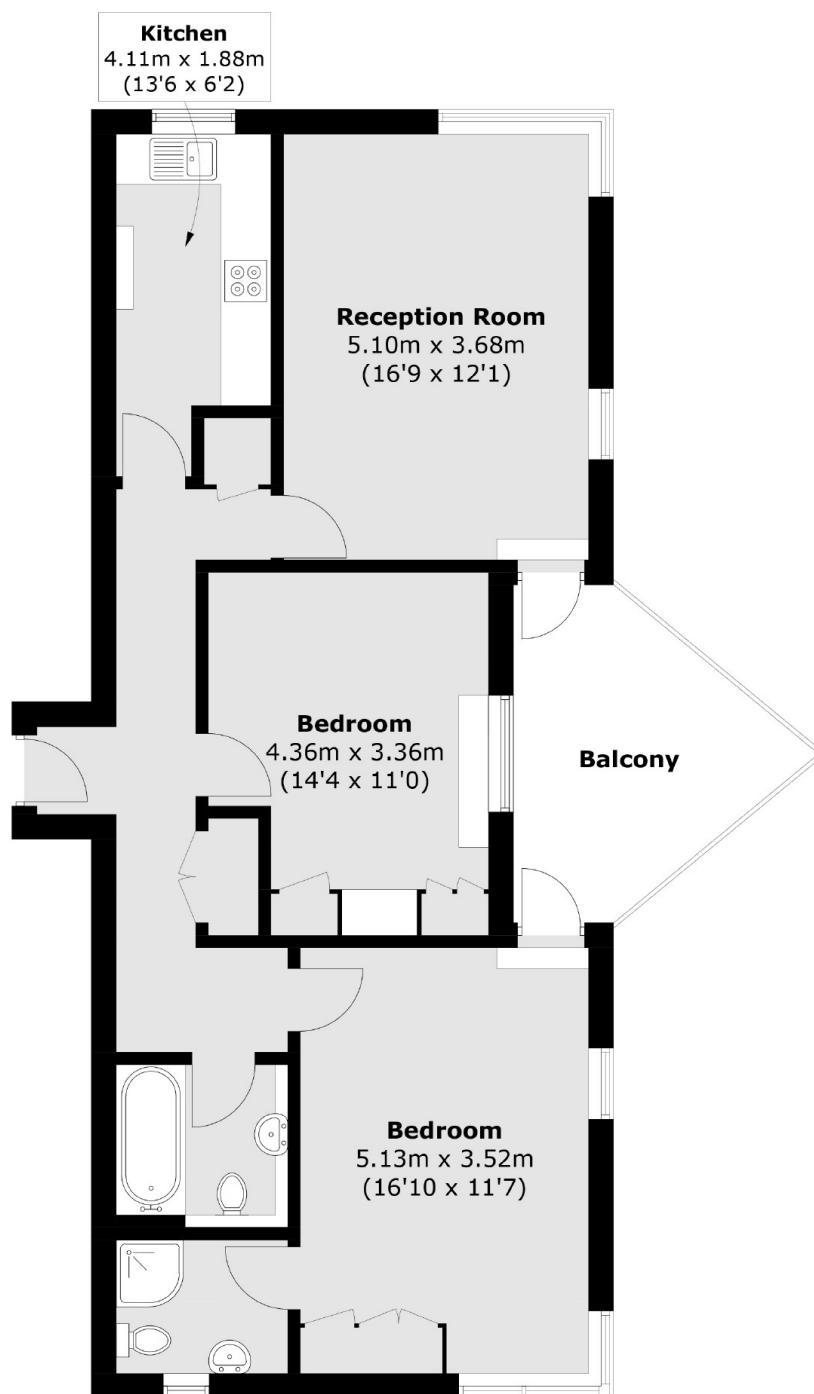
Offering over 850 Sq.Ft of ample living space and 105 Sq.Ft terrace is this two bedroom home located within the sought after riverside development Virginia Quay. Features to include dual aspect reception, re-fitted kitchen, covered allocated parking, on site concierge and 900 plus year lease.

Virginia Quay is located ideally for easy access into the City and Canary Wharf. Blackwall DLR station offers good links as well as the A13.

Features

River and 02 Views
110 Sq.Ft Terrace
Covered Allocated Parking
On Site Concierge
Re-Fitted Kitchen
900 Plus Year Lease

Newport Avenue, London, E14



Total area (approx.): 79.7 sq. m (857.9 sq. ft)
Balcony area (approx.): 9.8 sq. m (105.5 sq. ft)