



Newport Avenue, E14 £450,000

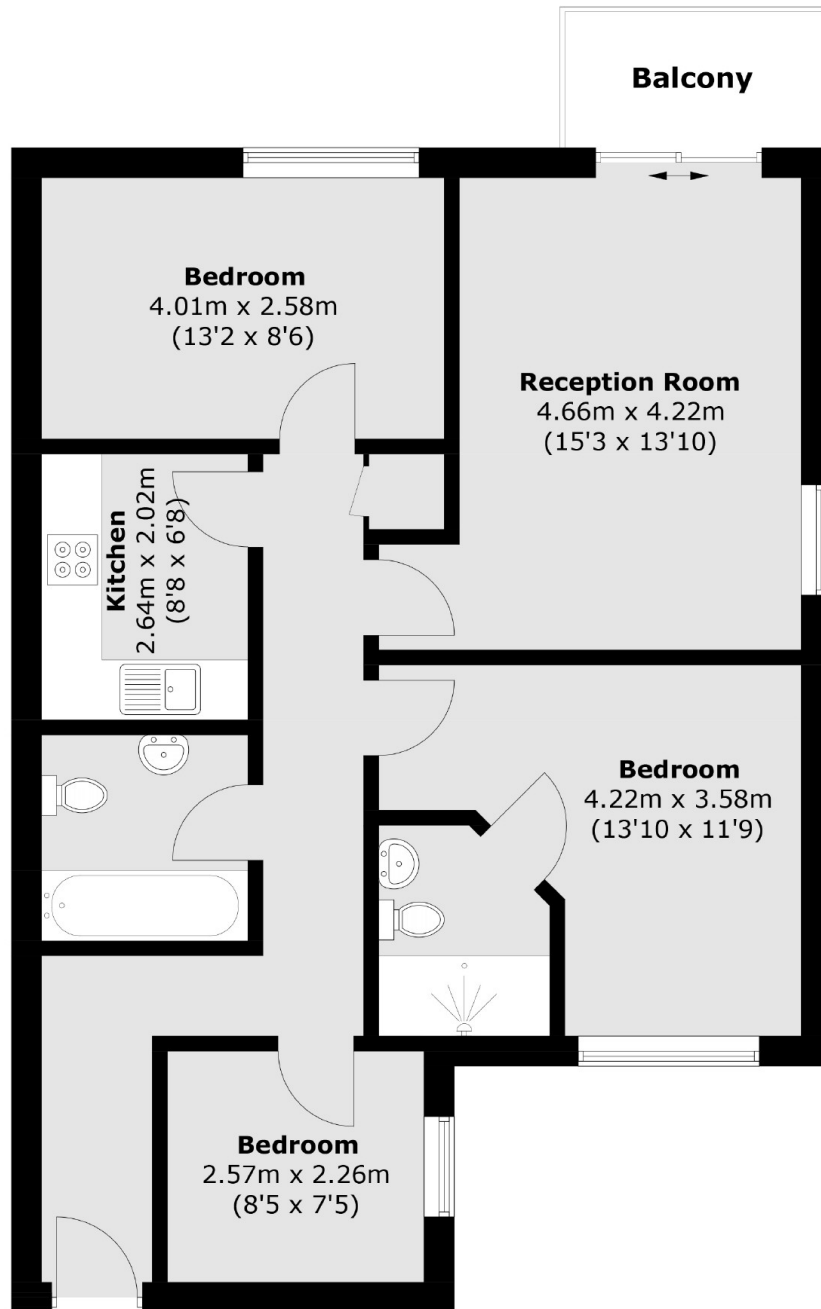
A three double bedroom, two bathroom apartment offering 798.7 Sq.Ft of ample living space situated in the popular Virginia Quay development. Features to include private balcony, allocated parking, concierge service and 900 plus year lease.

The property is located ideally for easy access into the City and Canary Wharf by road A13, or public transport via Blackwall DLR station.

Features

Guide Price 450,000 - 475,000
900 Plus Year Lease
Three Bedrooms
Two Bathrooms
798.7 Sq.Ft
Allocated Parking

Newport Avenue,
London, E14



Third Floor

Total area (approx.): 74.2 sq. m (798.7 sq. ft)
Balcony area: 3.5 sq. m (37.7 sq. ft)