

Fairmont Avenue, E14

£250,000

A west facing studio on the twenty-first floor of this popular dockside development. This well presented apartment has floor to ceiling windows, wooden flooring and a residents gym. The apartment has an open plan kitchen living area, and comes with plenty of storage. The development itself has a 24 hour concierge as well as access to the gym facilities which also includes a pool, sauna and steam room.

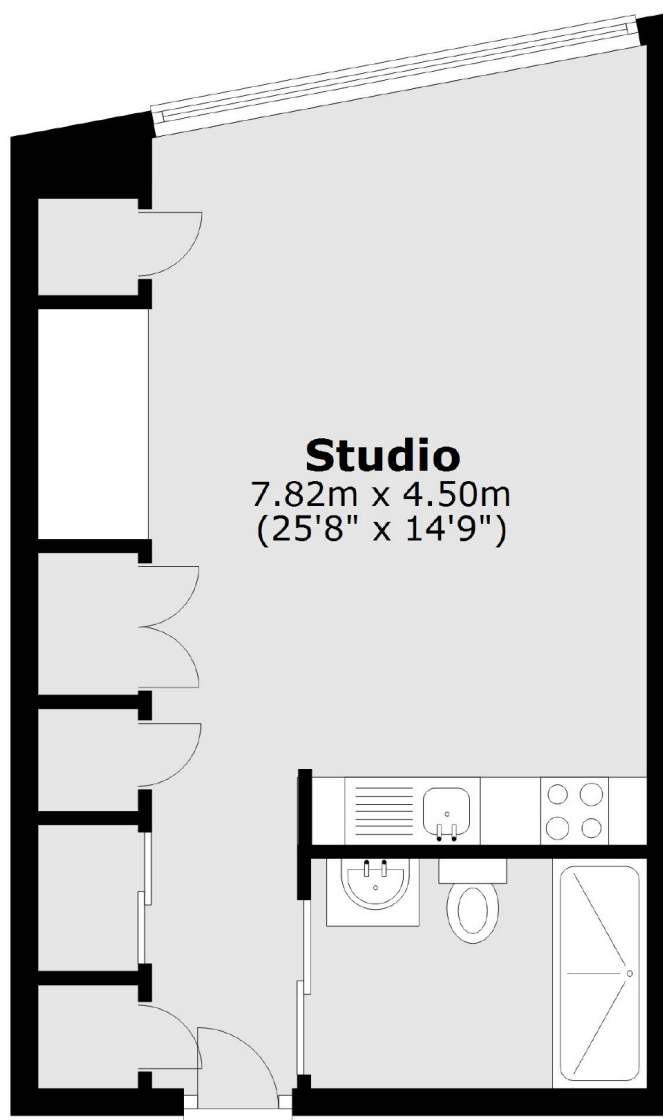
Located a few moments from Canary Wharf for a selection of bars, shops and restaurants. Blackwall DLR provides direct connections to Central London and City airport.

Features

Studio
Twenty First Floor
Wooden Flooring
Stunning Views
Concierge & Leisure Facilities
Guide Price £250,000 -
£275,000

Fairmont Avenue,
London, E14

21st floor



Total area: approx. 32.8 sq. metres (353.1 sq. feet)