

## Woodstock Terrace, E14 £325,000

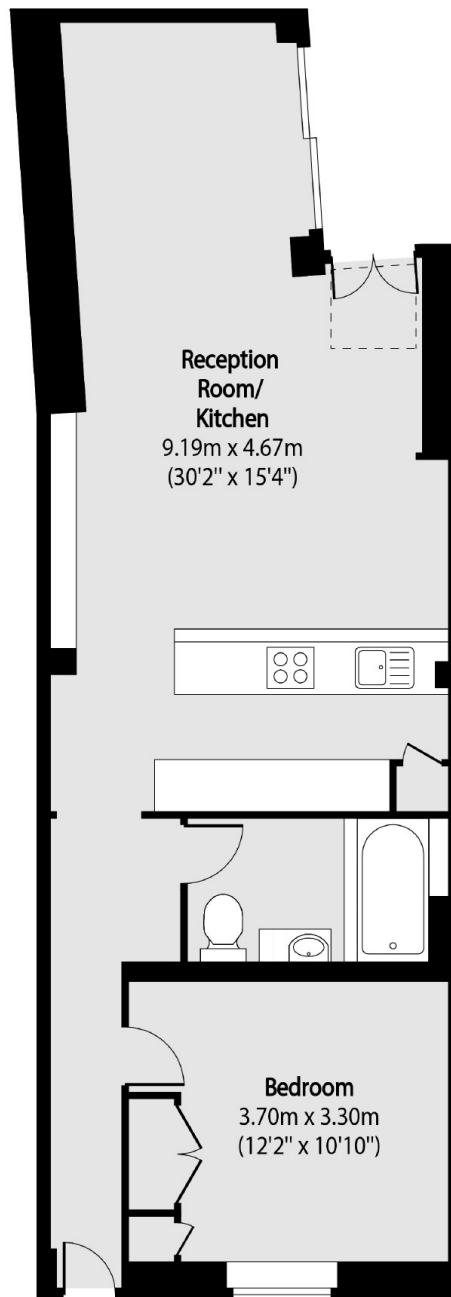
A one double bedroom flat in this period terraced house on the very sought after Woodstock Terrace. This property has a big open plan reception room with fitted kitchen and a small decked area outside.

Located just a few streets away from Poplar High street and with easy reach of Canary Wharf and the Jubilee shopping centre for all shops, bars and restaurants.

### Features

- Large One Bed
- Open Plan Kitchen/ Living
- Private Patio
- Share Of Freehold
- Period Conversion
- Recently Refurbished

Woodstock Terrace,  
London, E14



Total area (approx): 60.66 sq m (653 sq. ft)