



Woodstock Terrace, E14

£650,000

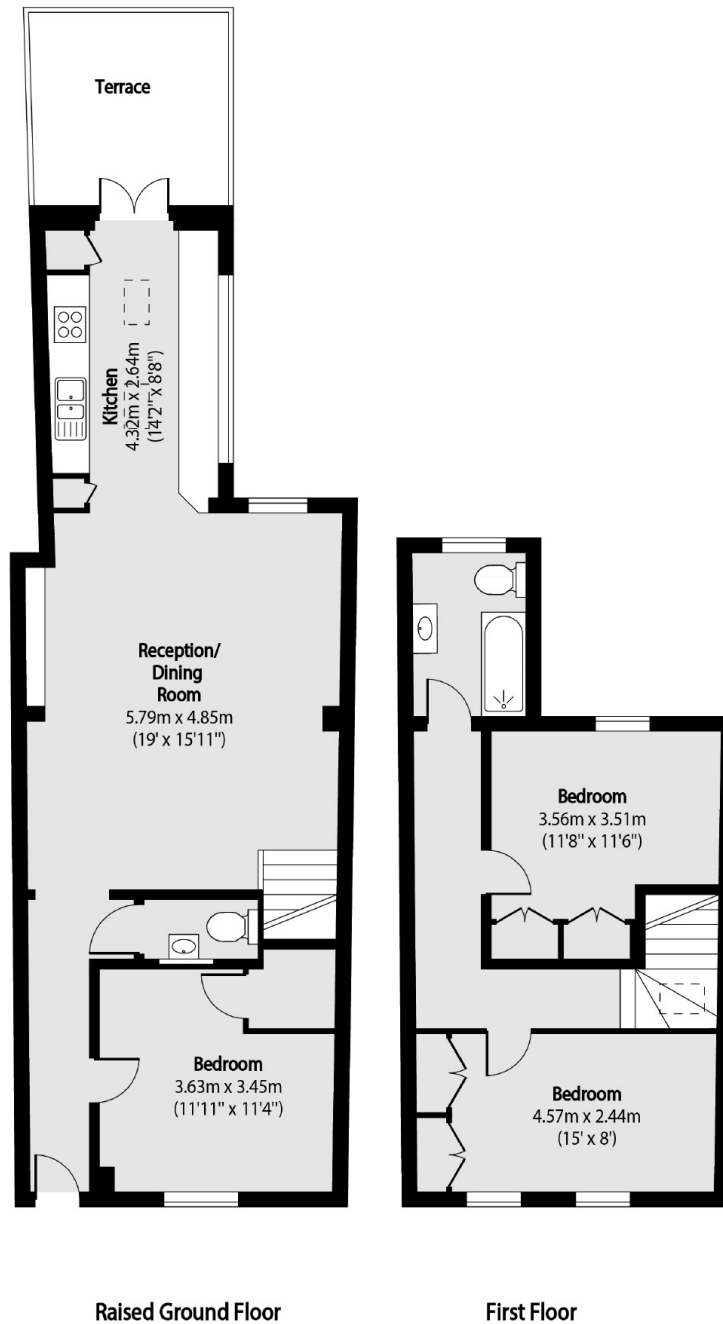
Offering 1,063 Sq.Ft of ample living space over two floors is this three bedroom period home with large private garden. Features to include re-fitted kitchen, re-fitted bathroom, rear garden with rear access and a share of freehold.

Located just a few streets away from Poplar High street and with easy reach of Canary Wharf and the Jubilee shopping centre for all shops, bars and restaurants.

Features

- 1,063 Sq.Ft
- Period Conversion
- Three Bedrooms
- Rear Garden with Access
- Share of Freehold
- Guide Price £650,000-£700,000

Woodstock Terrace, London, E14



Total area (approx): 98.57 sq m (1061 sq. ft)

Terrace total area (approx): 9.01 sq m (97 sq. ft)