



Westferry Road, E14

£465,000

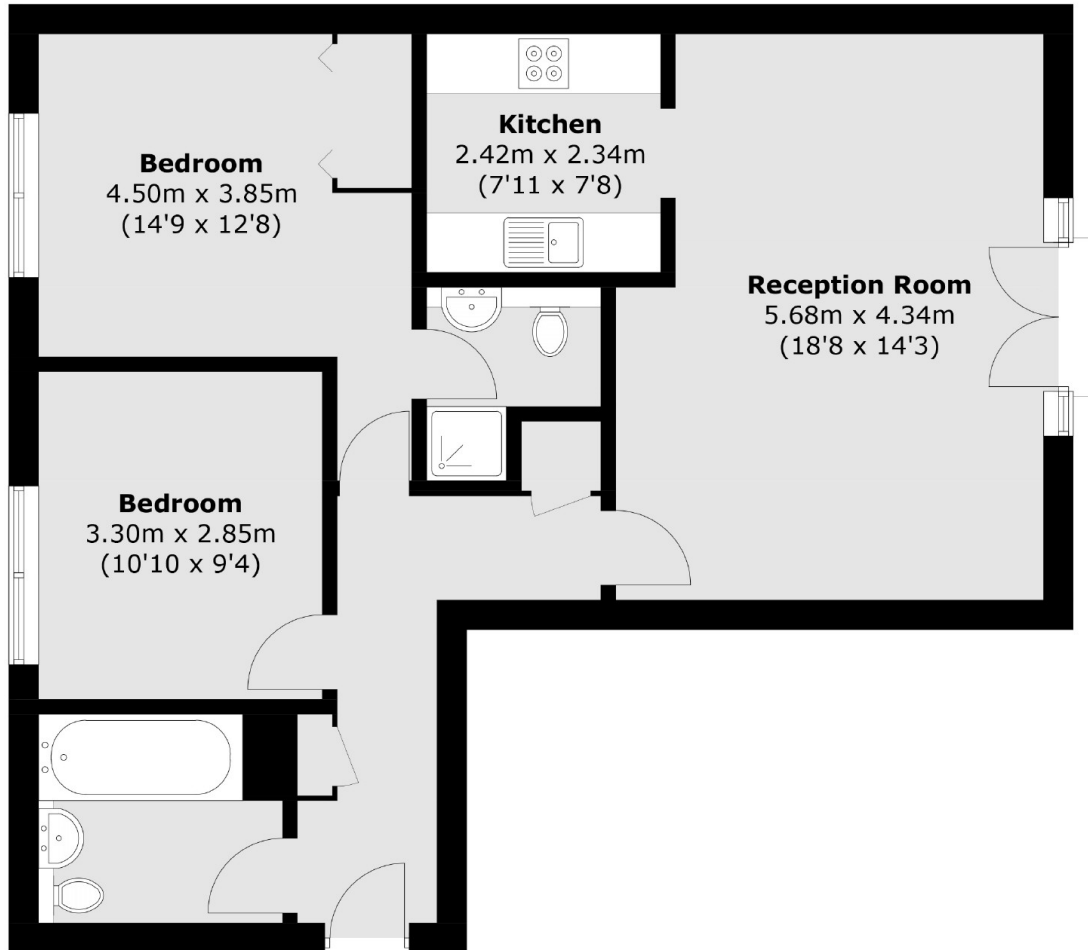
Offering river and city views is this top floor two double bedroom home located in the popular Millennium Harbour. Features to include re-fitted kitchen, reception room with Juliette balcony, secure allocated parking, concierge service and residents leisure facilities.

Edison Building is located within the riverside development Millennium Harbour and is 0.5 miles from Canary Wharf which provides good travel links and a wide selection of restaurant and bars.

Features

Offers In Excess Of
River And City Views
Two Double Bedrooms
Two Bathrooms
Re-Fitted Kitchen
Residents Leisure Facilities

Westferry Road, London, E14



Total area (approx.): 70.9 sq. m (763.2 sq. ft)