

Linton Gardens, E6

£385,000

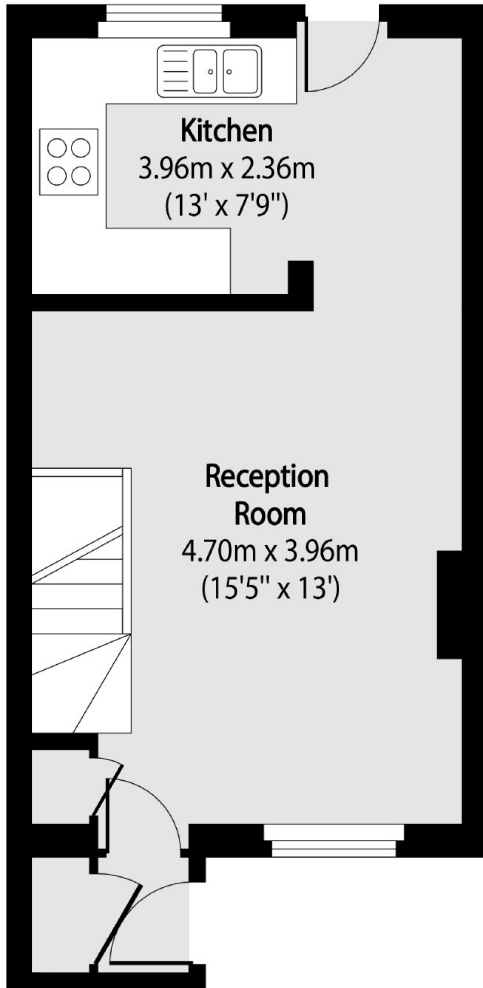
This two bedroom, freehold and end terrace home is offered to the market in good condition. Features to include large private rear garden, re-fitted bathroom, entrance with porch and wooden flooring.

Royal Albert DLR Station is just under a mile away and offers good links to the City and Canary Wharf. Beckton retail park always offers a selection of shops and restaurants and Tesco supermarket.

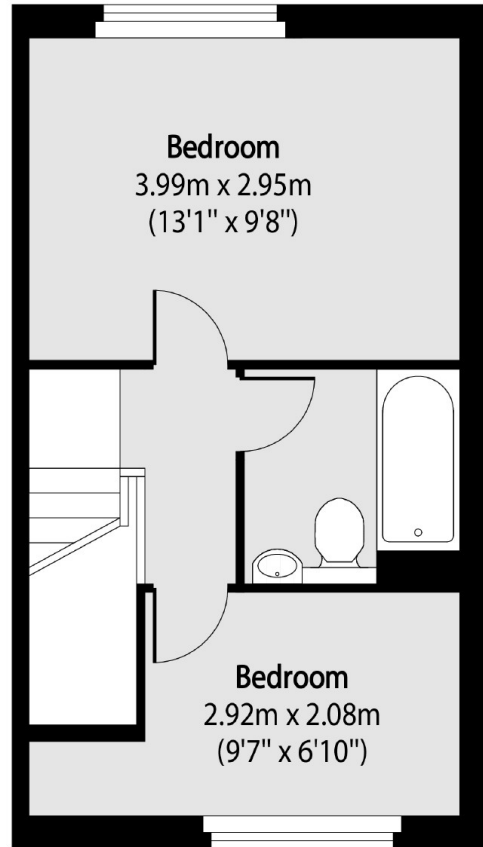
Features

- 638 Sq.Ft
- Two Double Bedrooms
- Re-Fitted Bathroom
- Private Rear Garden
- Wooden Flooring
- Entrance Porch

Linton Gardens,
London, E6



Ground Floor



First Floor

Total area (approx): 59.27 sq m (638 sq. ft)