

Linton Gardens, E6

£400,000

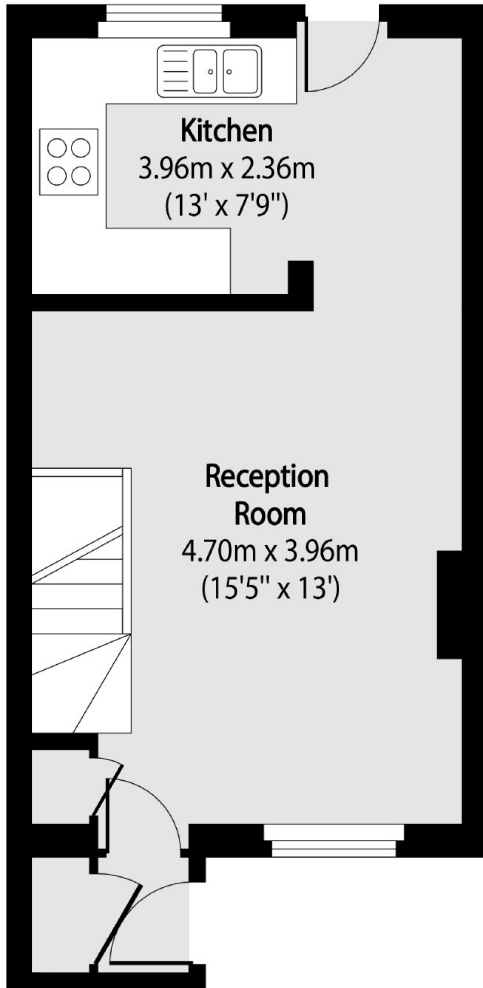
This two bedroom, freehold and end terrace home is offered to the market in good condition. Features to include large private rear garden, re-fitted bathroom, entrance with porch and wooden flooring.

Royal Albert DLR Station is just under a mile away and offers good links to the City and Canary Wharf. Beckton retail park always offers a selection of shops and restaurants and Tesco supermarket.

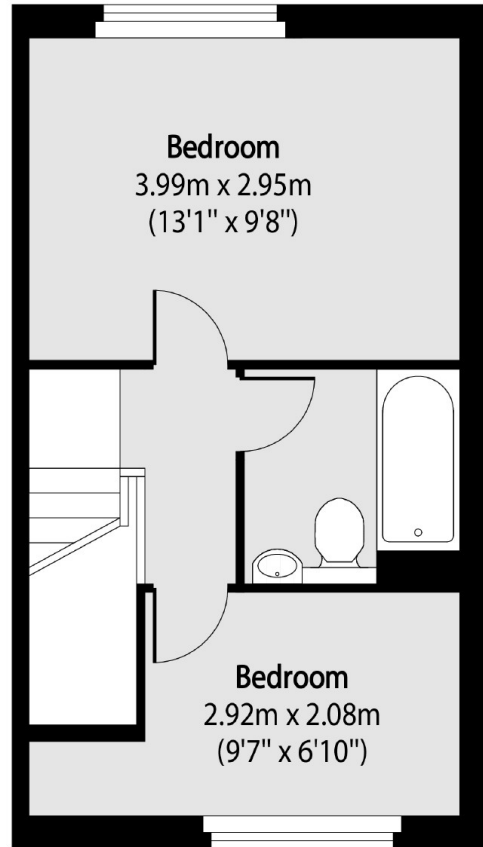
Features

638 Sq.Ft
Two Double Bedrooms
Re-Fitted Bathroom
Private Rear Garden
Wooden Flooring
Entrance Porch

Linton Gardens,
London, E6



Ground Floor



First Floor

Total area (approx): 59.27 sq m (638 sq. ft)