



Westferry Road, E14  
£800,000

**Dexters**



## Westferry Road, E14

A three bedroom penthouse apartment located in the sought after Ocean Wharf development. Features to include re-fitted bathrooms, large triple aspect reception room,

Accommodation comprise of main entrance with access to lift and stairwell, entrance hall leading to triple aspect reception room, kitchen and second hall which leads to all three bedrooms and family bathroom.

The property has also gone under refurbishment over the years and further benefits are to include wooden flooring, new carpet and re-fitted bathrooms.

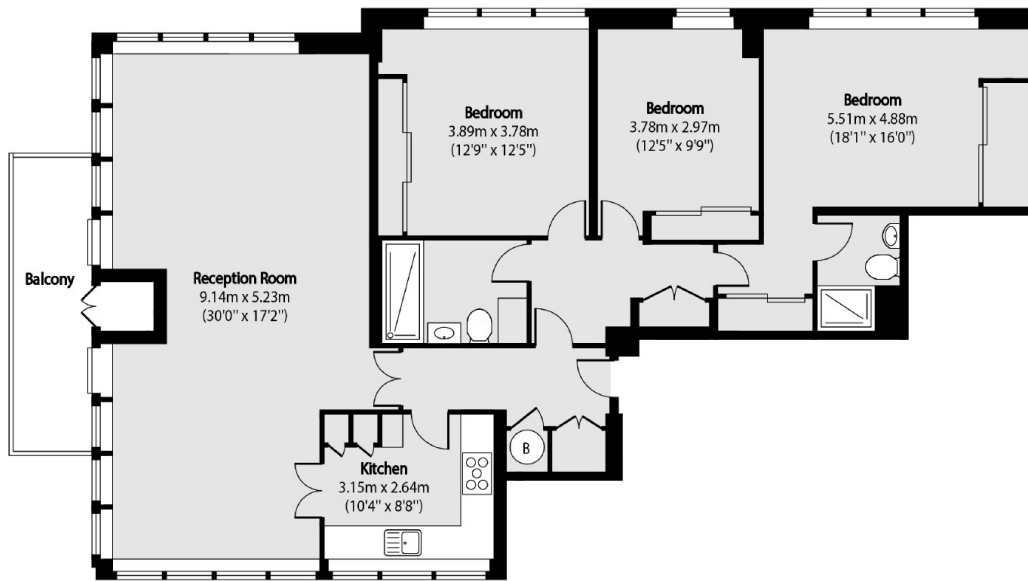
Ocean Wharf is 0.5 miles from Westferry DLR Station which provides good access to Canary Wharf and the City. Canary Wharf offers a good selection of restaurants, bars and also has further transport links to include the Jubilee line and Cross Rail.

### Features

- Riverside Gated Development
- Two Parking Spaces
- Large Terrace
- Canary Wharf Views
- Concierge Service
- Residents Gym



# Westferry Road, London, E14



Total area (approx): 119.56 sq m (1287 sq. ft)

Balcony total area (approx): 7.89 sq m (85 sq. ft)