



Victoria Road, RM1

£165,000

This bright open plan living/kitchen studio apartment is located in Portman house. Features to include Integrated appliances, hardwood floors throughout and good size bathroom.

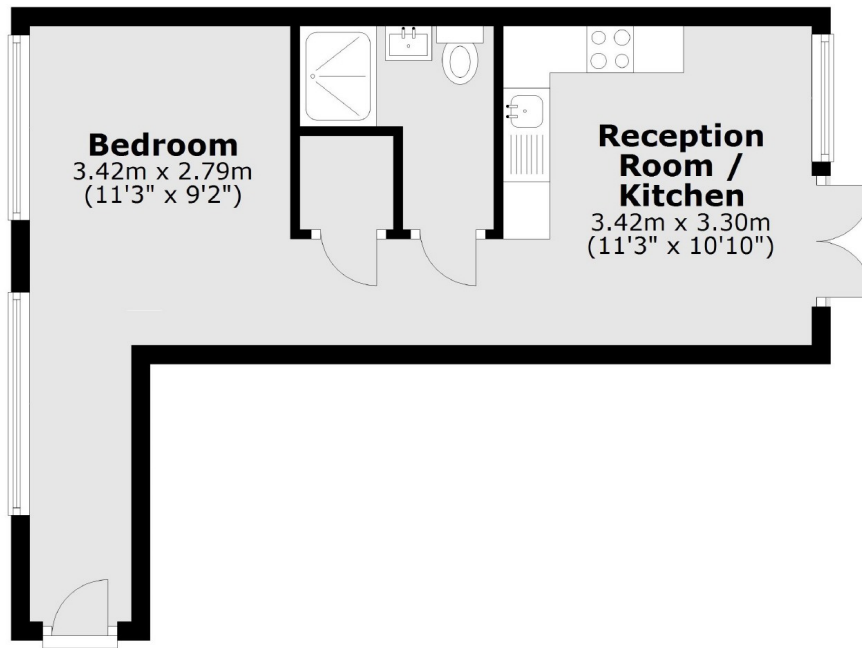
Just a short walk from Romford station with excellent links to London Victoria and Romford high street.

Features

Studio Apartment
Ground Floor
Long Lease
Parking
Guide Price £165,000 -
£175,000

Victoria Road,
Romford, RM1

Ground Floor



Total area: approx. 31.9 sq. metres (342.9 sq. feet)