



Guthridge Close, E14

£450,000

Offering almost 800 Sq.Ft of ample living space is this two bedroom home located on the fourth floor of this canal side development. Features to include two double bedrooms, two bathrooms, open plan reception with access to private balcony.

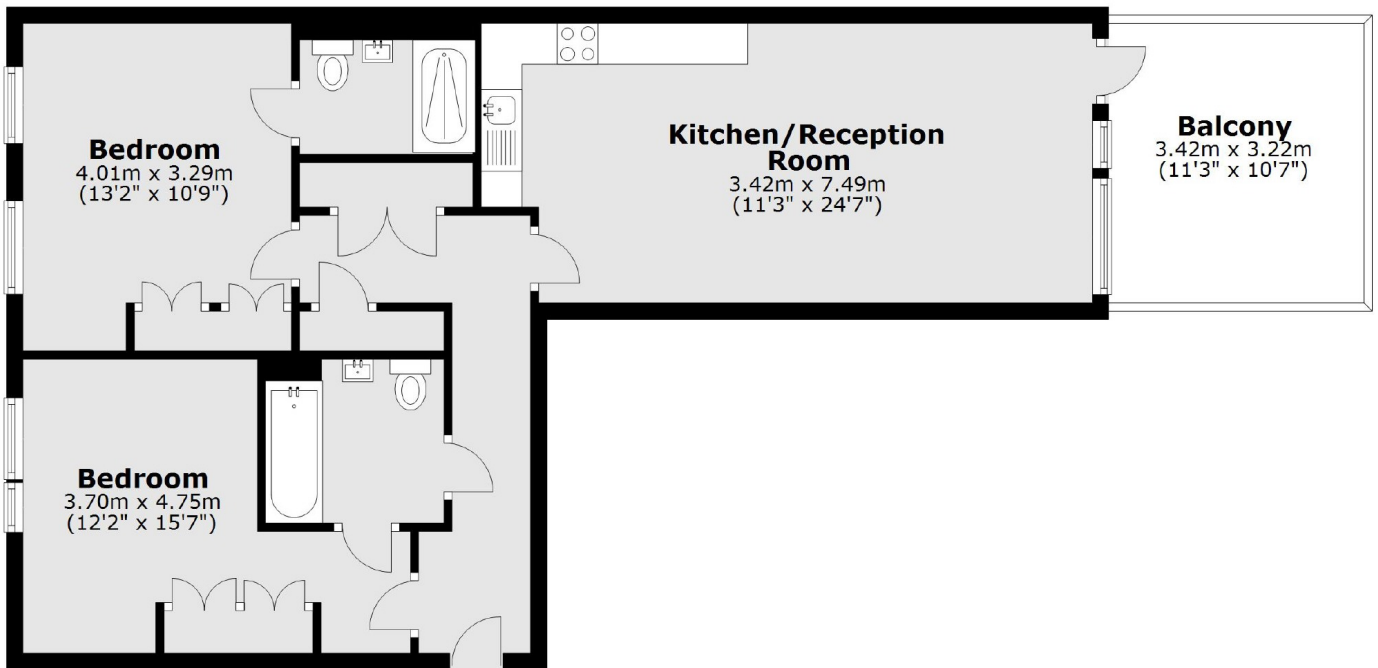
Steevens Court located well to Bartlett Park and is just moments away from Langdon Park and Westferry DLR Stations which both provide quick access to Canary Wharf, Stratford, City Airport and Bank.

Features

Fourth Floor
Canal Side Development
Two Double Bedrooms
Two Bathrooms
Private Balcony
Guide Price-£450,000-
£475,000

Guthridge Close, London, E14

Fourth Floor



Main area: Approx. 71.4 sq. metres (768.3 sq. feet)
Plus balconies, approx. 11.0 sq. metres (118.6 sq. feet)