



26 Littleworth Street
, Evesham, WR11 4AN

£1,000 Per month




CHRISTIAN
LEWIS
—PROPERTY—

26 Littleworth Street

, Evesham, WR11 4AN

Spacious 2-Bedroom Mid-Terraced House to Rent

Located just a short stroll from Evesham town centre, this newly redecorated 2-bedroom mid-terraced house offers generous living space and a welcoming atmosphere—ideal for professionals, couples, or small families.

Upon entering the property, you're greeted by a bright entrance hall that leads into a spacious open-plan lounge and dining area, complete with a charming bay window and a working gas fire.

The well-appointed kitchen offers ample worktop space and plenty of cupboard storage, along with an oven. A fridge, freezer, and dishwasher are also included for convenience; however, please note these are provided on a goodwill basis and are not the landlord's responsibility for repair or replacement.

Upstairs, you'll find two good-sized bedrooms. Bedroom two benefits from newly laid carpets, while the main bedroom features a built-in storage cupboard and a large wardrobe, offering excellent storage solutions. The family bathroom includes a shower over bath and a further storage cupboard.

Outside, the property boasts a private, enclosed rear garden—ideal for relaxing or entertaining during the warmer months.

Early viewing is highly recommended to fully appreciate what this lovely home has to offer.

Additional Information

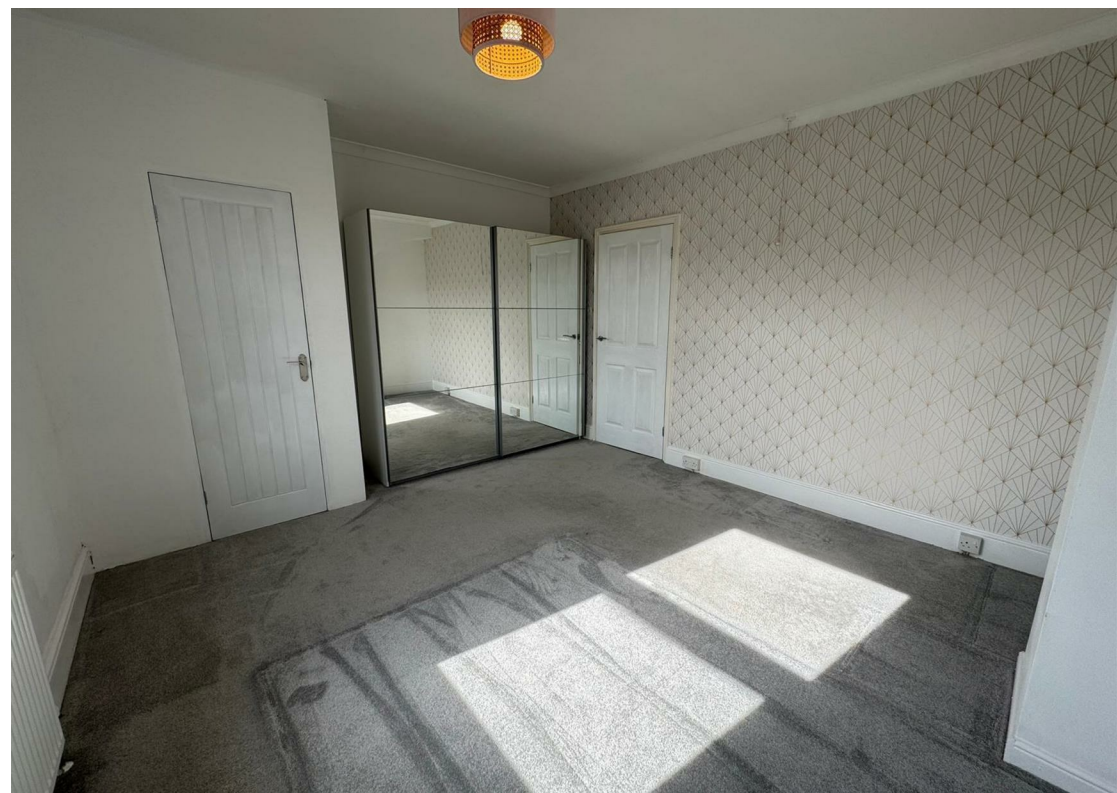
Council Tax Band: B

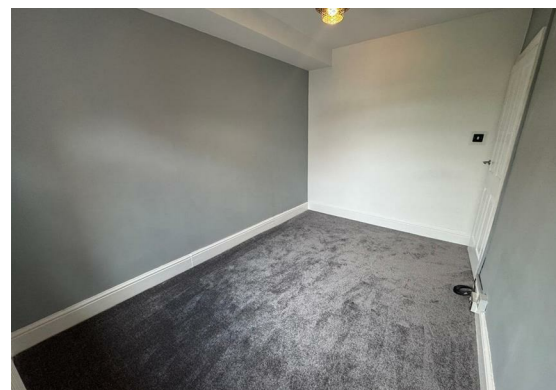
EPC Rating: D

Local Authority: Wychavon

Information About Costs

Important Information - If your application to rent this property is successful, we will request a refundable holding deposit which will secure the property for you,





subject to referencing. The holding deposit is equal to one weeks rent and the full deposit is a maximum of 5 weeks rent. More information will be provided on successful application.



Floor Plan



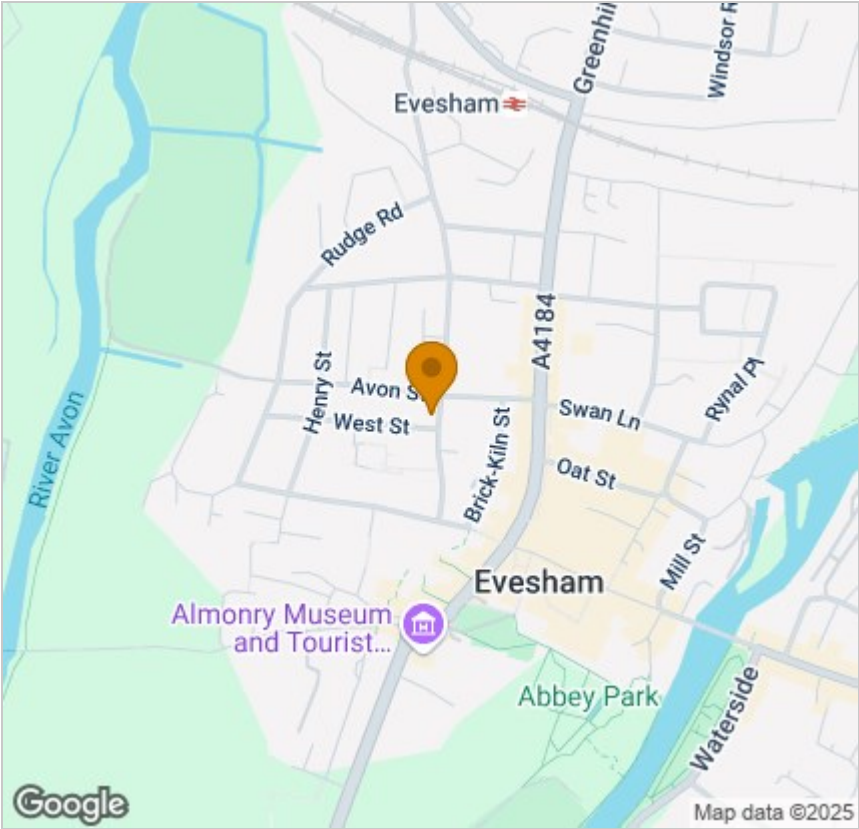
Viewing

Please contact our Evesham Office on 01386 442929 if you wish to arrange a viewing appointment for this property or require further information.

These particulars, whilst believed to be accurate are set out as a general outline only for guidance and do not constitute any part of an offer or contract. Intending purchasers should not rely on them as statements of representation of fact, but must satisfy themselves by inspection or otherwise as to their accuracy. No person in this firms employment has the authority to make or give any representation or warranty in respect of the property.

86 High Street, Evesham, Worcs, WR11 4EU
Tel: 01386 442929 Email: christian@christianlewisproperty.co.uk www.christianlewisproperty.co.uk

Area Map



Energy Efficiency Graph

