



17 Spiers Crescent, Evesham, WR11 2RU

£400,000



CHRISTIAN
LEWIS
— PROPERTY —



17 Spiers Crescent, Evesham, WR11 2RU

£400,000

This beautifully presented four-bedroom family home is ideally situated in the sought-after Hampton area of Evesham, offering breath-taking, uninterrupted views of Bredon Hill from the front and overlooking a future country park.

The impressive accommodation includes an inviting entrance hall, a versatile office/study, a spacious living room, a convenient downstairs W.C./cloakroom, and an open-plan kitchen/dining area with doors leading to the rear garden. Upstairs, you'll find a family bathroom, an airing cupboard, three double bedrooms (including a master with an en-suite), and a single bedroom.

Outside, the property features a well-maintained front lawn, a private driveway accommodating up to three cars, and a large, secluded rear garden with access to a converted garage. The home also benefits from a recently converted garage providing additional living space, Karndean flooring throughout the ground floor, and a fully landscaped, mature garden.

Additional Information

Tenure: We understand that the property is for sale Freehold.

Local Authority: Wychavon District Council.

Council Tax Band: We understand that the Council Tax Band for the property is Band F

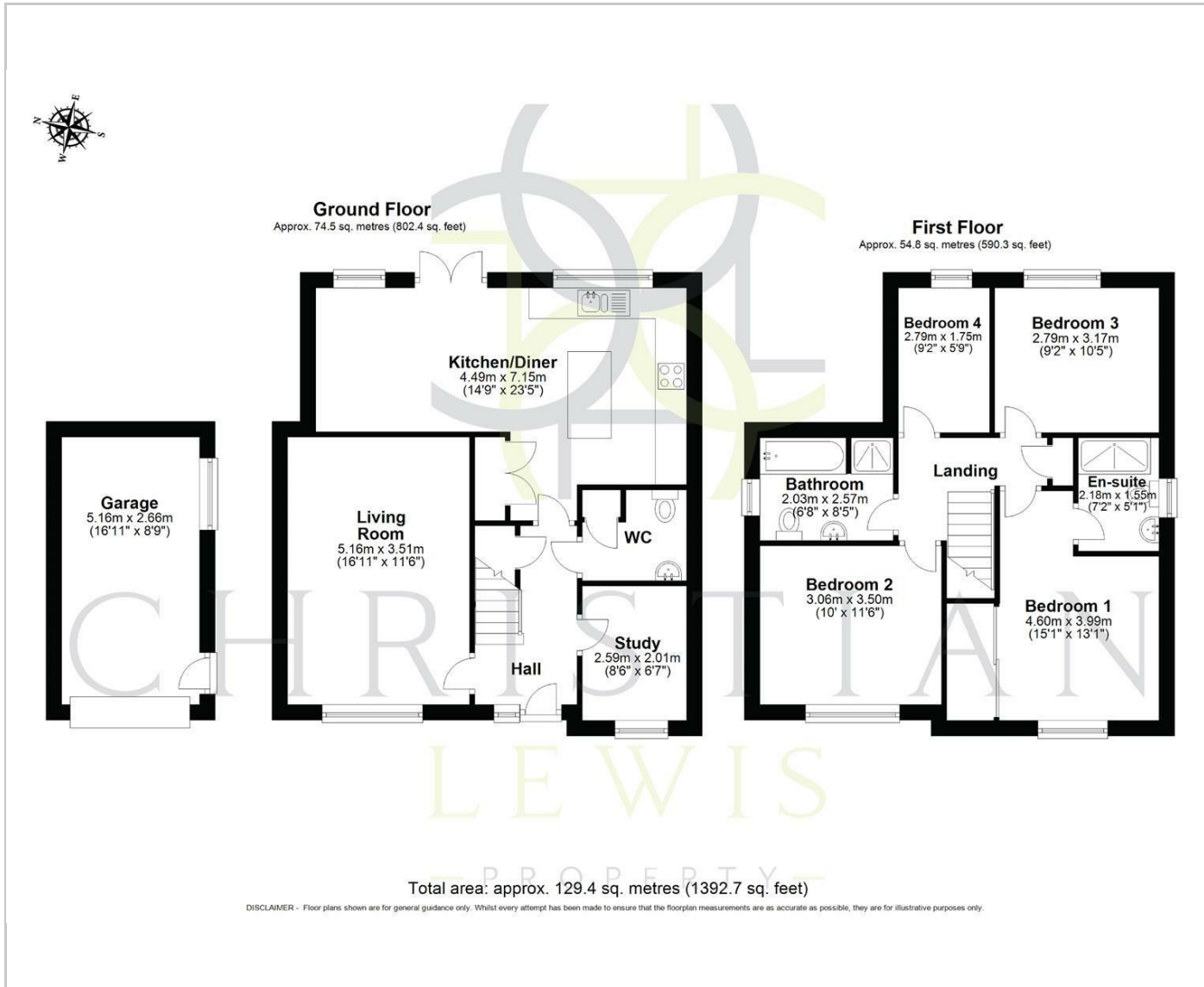
EPC Rating: B

Disclaimer

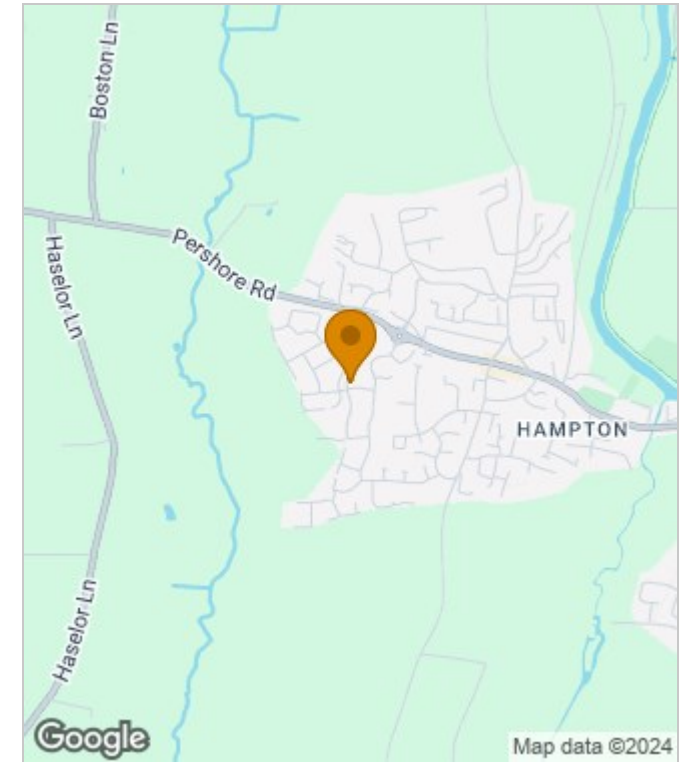
Whilst we make enquiries with the Seller to ensure the information provided is accurate, Christian Lewis makes no representations or warranties of any kind with respect to the statements contained in the particulars which should not be relied upon as representations of fact. All representations contained in the particulars are based on details supplied by the Seller. Your Conveyancer is legally responsible for ensuring any purchase agreement fully protects your position. Please inform us if you become aware of any information being inaccurate.



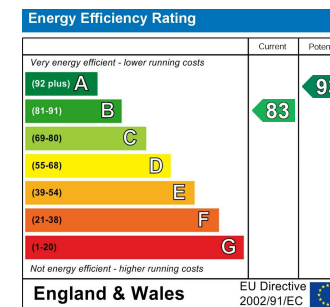
Floor Plans



Area Map



Energy Performance Graph



These particulars, whilst believed to be accurate are set out as a general outline only for guidance and do not constitute any part of an offer or contract. Intending purchasers should not rely on them as statements of representation of fact, but must satisfy themselves by inspection or otherwise as to their accuracy. No person in this firm's employment has the authority to make or give any representation or warranty in respect of the property.