




## Borrowdale Close, Peterborough, PE4 7YA

£280,000

 3  1  1



**Butler & Co Estate Agents** are delighted to present this spacious, three double-bedroom detached bungalow, situated in the highly sought-after location of Gunthorpe. This impressive home boasts excellent transport links and offers a generous living area with a beautifully landscaped, mature garden. The property also features a large driveway leading to a garage, providing ample parking space and much more.

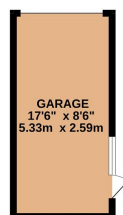
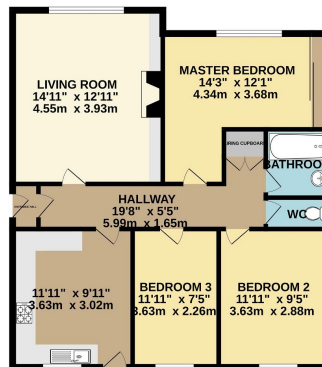
Ideally located in a cul-de-sac, this home offers easy access to local schools, shops, restaurants, and great commuter and transport links.

Don't miss out on this fantastic opportunity. Call Butler & Co today to arrange a viewing!

## Key Features

- Detached Bungalow.
- Cul-de-sac Location.
- Large Driveway.
- Great Commuter & Transport Links.
- Front & Rear Garden
- Three Double Bedrooms.
- Perfect Modernisation Project.
- Garage.
- Easy Access to Local Schools, Shops, Restaurants.
- Sought-after Location of Gunthorpe

GROUND FLOOR  
948 sq.ft. (88.1 sq.m.) approx.



TOTAL FLOOR AREA: 948 sq.ft. (88.1 sq.m.) approx.

Whilst every attempt has been made to ensure the accuracy of the description contained here, measurements of doors, windows, rooms and any other items are approximate and no responsibility is taken for any error, omission or mis-statement. This plan is for illustrative purposes only and should be used as such by any prospective purchaser. The services, systems and appliances shown have not been tested and no guarantee is given as to their operability or efficiency at the time of writing.  
Made with Metropac C2024