


103 Uldale Way

£240,000

 3  1  1



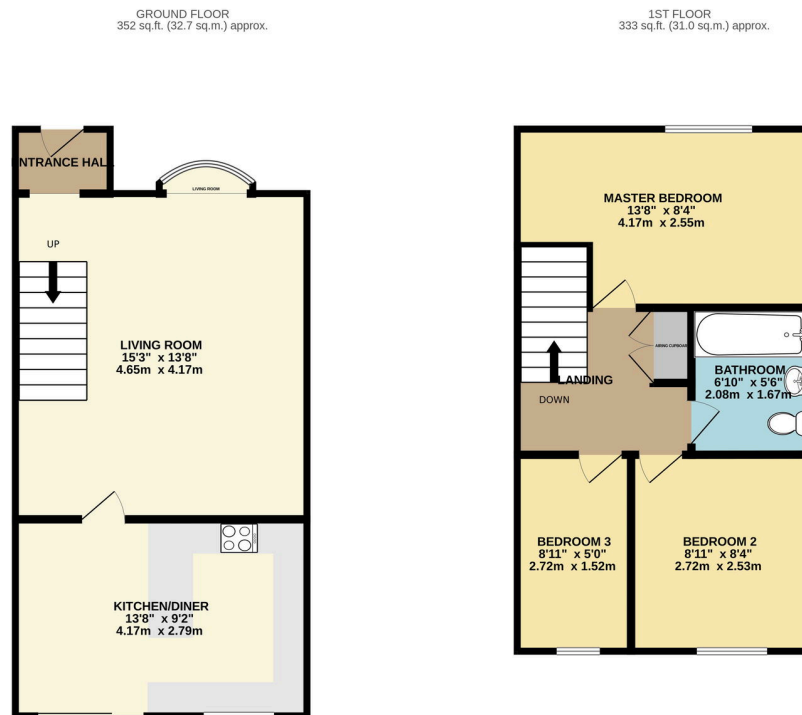
Butler & Co Estate Agents are delighted to present this beautifully decorated three-bedroom detached family home, situated in the highly sought-after area of Gunthorpe, Peterborough.

This impressive property features a welcoming entrance hall, a spacious living room, and an open-plan kitchen/dining area. Upstairs, you'll find three bedrooms and a modern family bathroom.

The property boasts a generous driveway along with beautifully landscaped rear gardens—ideal for outdoor entertaining, relaxation, or family life.

Gunthorpe is a popular residential area known for its friendly community feel, excellent local amenities, and easy access to primary and secondary schools, shops, restaurants, and green spaces. With strong commuter links to Peterborough city centre and beyond, it's a fantastic location for families and professionals alike.

- Detached House
- Landscaped Rear Garden
- Large Driveway
- Kitchen / Dining Room
- Beautify Presented
- Three Bedrooms
- Close to Local Schools, Shops, & a Aminites
- Well Maintained
- Excellent Commuter Links
- Popular Location of Gunthorpe



TOTAL FLOOR AREA: 685 sq.ft. (63.6 sq.m.) approx.

Whilst every attempt has been made to ensure the accuracy of the floorplan contained here, measurements of doors, windows, rooms and any other items are approximate and no responsibility is taken for any error, omission or mis-statement. This plan is for illustrative purposes only and should be used as such by any prospective purchaser. The services, systems and appliances shown have not been tested and no guarantee as to their operability or efficiency can be given.
Made with Metropix C3025