

**RIPLEY
FIVE
BEDROOM
HOME**

BLOOR HOMES



A five bedroom detached home with spacious lounge with bay window and an impressive kitchen / dining / family area with French doors opening onto the rear garden. Downstairs also comprises a convenient utility room, study and cloakroom. The master bedroom benefits from fitted wardrobes and an en suite shower room.

RIPLEY

**AN OUTSTANDING FIVE
BEDROOM FAMILY HOME**

**RIPLEY
FIVE
BEDROOM
HOME**

FIRST FLOOR:

BEDROOM 1
3.20m x 3.64m
10'6" x 11'11"

EN SUITE

BEDROOM 2
4.00m x 3.18m
13'1" x 10'5"

EN SUITE

BEDROOM 3
3.15m x 3.90m
10'4" x 12'10"

BEDROOM 4
3.03m x 2.80m
9'11" x 9'2"

BEDROOM 5
2.69m x 2.80m
8'10" x 9'2"

BATHROOM

GROUND FLOOR:

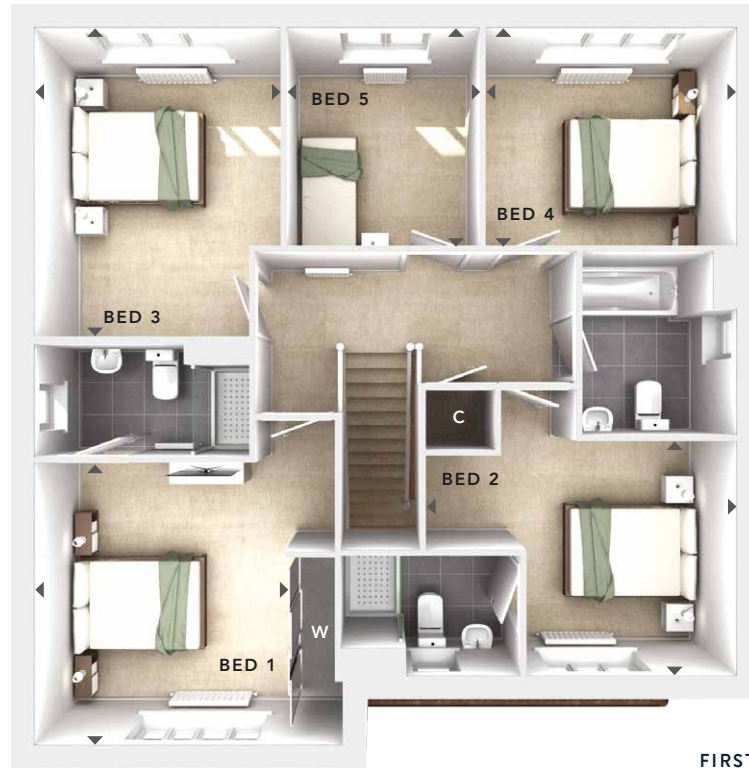
LOUNGE
3.80m x 5.15m
12'5" x 16'11"

**KITCHEN / DINING /
FAMILY**
9.06m x 3.95m
29'8" x 12'11"

UTILITY
1.92m x 1.75m
6'4" x 5'9"

STUDY
2.96m x 2.33m
9'8" x 7'8"

CLOAKS



**FIRST
FLOOR**



**GROUND
FLOOR**

- W** - Fitted Wardrobes
- C** - Storage
- △ - External Access
- ◀▶ - Measurement Points

© Bloor Homes • M571B 5

BLOOR HOMES

These particulars are intended as a preliminary guide for prospective purchasers and should not be relied upon. The elevational treatment for individual house types shows a typical arrangement. Details of materials and design treatments may vary. Any artist impressions shown are not intended to represent any particular plot. Purchasers are advised to inspect the layout plan to establish the arrangement of the house and surrounding property. Internal layouts show a general arrangement which may vary from plot to plot. Room sizes given are approx. overall finished room sizes and subject to normal building tolerances (ie ± 75mm). In all instances purchasers are advised to inspect plot specific information available from our sales team. Nothing in these particulars or verbal assurance shall form or constitute part of any contract, and are given without any responsibility on behalf of Bloor Homes.