

**DAWLISH  
FOUR  
BEDROOM  
HOME**

**BLOOR HOMES**



A four bedroom detached home comprising a spacious lounge and impressive kitchen / dining / family area with a bay window, and French doors opening onto the rear garden. Downstairs also includes a utility, study and cloakroom. Upstairs boasts four double bedrooms and the family bathroom, complete with a bath and separate shower enclosure. Bedrooms 1 and 2 feature en-suite shower rooms with the master benefitting from fitted wardrobes.

**DAWLISH**

**AN OUTSTANDING FOUR  
BEDROOM FAMILY HOME**

**DAWLISH  
FOUR  
BEDROOM  
HOME**

**FIRST FLOOR:**

**BEDROOM 1**  
3.56m x 4.06m  
11'8" x 13'4"

**EN SUITE**

**BEDROOM 2**  
3.14m x 2.69m  
10'4" x 8'10"

**EN SUITE**

**BEDROOM 3**  
3.30m x 3.98m  
10'10" x 13'0"

**BEDROOM 4**  
3.23m x 3.39m  
10'7" x 11'2"

**BATHROOM**

**GROUND FLOOR:**

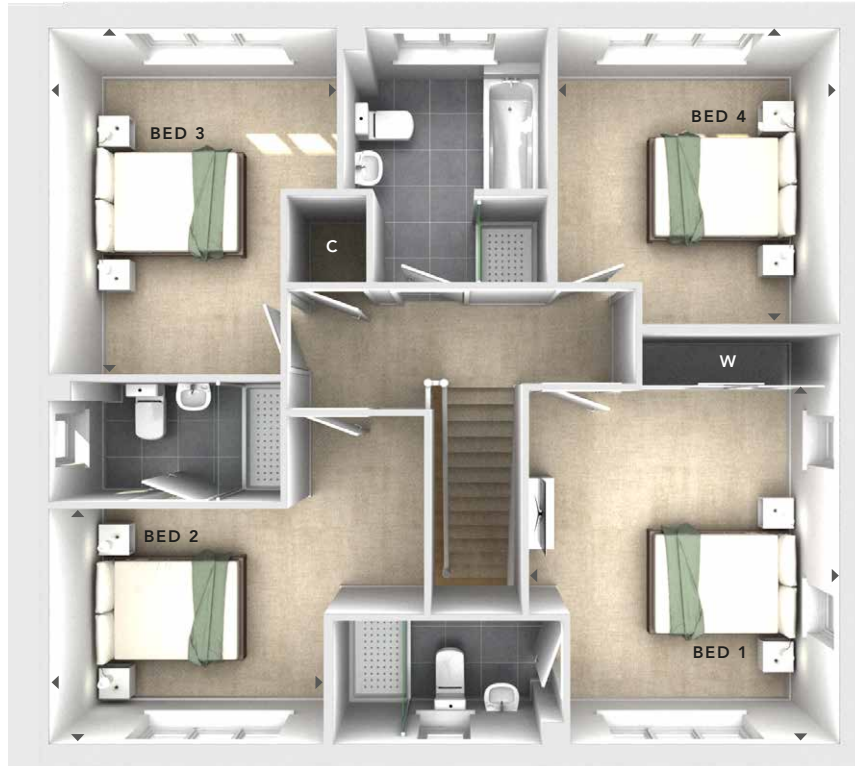
**LOUNGE**  
3.48m x 4.78m  
11'5" x 15'8"

**KITCHEN / DINING /  
FAMILY**  
9.07m x 3.95m  
29'9" x 13'0"

**STUDY**  
3.14m x 2.15m  
10'3" x 7'1"

**UTILITY CUPBOARD**  
1.99m x 1.89m  
6'6" x 6'2"

**CLOAKS**



**FIRST  
FLOOR**



**GROUND  
FLOOR**

- W - Fitted Wardrobes
- C - Storage
- △ - External Access
- ◀ ▶ - Measurement Points

© Bloor Homes • 496B 4.3

**BLOOR HOMES**

These particulars are intended as a preliminary guide for prospective purchasers and should not be relied upon. The elevational treatment for individual house types shows a typical arrangement. Details of materials and design treatments may vary. Any artist impressions shown are not intended to represent any particular plot. Purchasers are advised to inspect the layout plan to establish the arrangement of the house and surrounding property. Internal layouts show a general arrangement which may vary from plot to plot. Room sizes given are approx. overall finished room sizes and subject to normal building tolerances (i.e. ± 75mm). In all instances purchasers are advised to inspect plot specific information available from our sales team. Nothing in these particulars or verbal assurance shall form or constitute part of any contract, and are given without any responsibility on behalf of Bloor Homes.