

**HORSHAM
FOUR
BEDROOM
HOME**

BLOOR HOMES



A four bedroom detached home comprising a spacious lounge and impressive kitchen / dining / family area with a bay window, both feature beautiful French doors opening onto the rear garden. Downstairs also includes a convenient utility cupboard, study and cloakroom. Upstairs boasts four double bedrooms and the family bathroom, complete with a bath and separate shower enclosure. The master bedroom features fitted wardrobes and an en suite shower room.

HORSHAM

**AN OUTSTANDING FOUR
BEDROOM FAMILY HOME**

**HORSHAM
FOUR
BEDROOM
HOME**

FIRST FLOOR:

BEDROOM 1
3.44m x 3.01m
11'3" x 9'10"

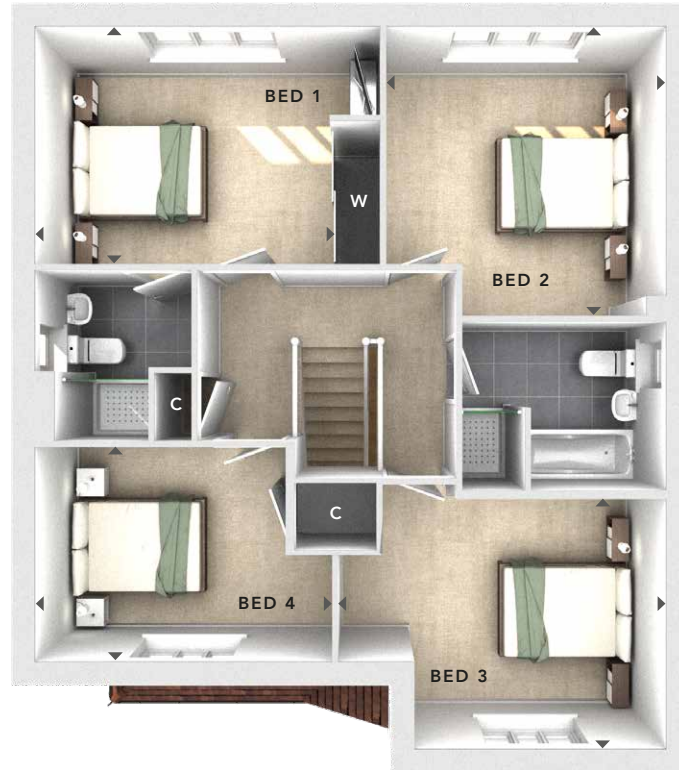
EN SUITE

BEDROOM 2
3.84m x 3.66m
12'7" x 12'0"

BEDROOM 3
4.39m x 3.14m
14'5" x 10'3"

BEDROOM 4
3.54m x 2.72m
11'7" x 8'11"

BATHROOM



**FIRST
FLOOR**

GROUND FLOOR:

LOUNGE
3.59m x 4.59m
11'9" x 15'1"

**KITCHEN / DINING /
FAMILY**
4.26m x 8.15m
14'0" x 26'7"

STUDY
3.16m x 1.80m
10'4" x 5'11"

UTILITY CUPBOARD

CLOAKS



**GROUND
FLOOR**

- W** - Fitted Wardrobes
- C** - Storage
- U** - Utility Cupboard
- △ - External Access
- ◀▶ - Measurement Points

© Bloor Homes • M481B 5

BLOOR HOMES

These particulars are intended as a preliminary guide for prospective purchasers and should not be relied upon. The elevational treatment for individual house types shows a typical arrangement. Details of materials and design treatments may vary. Any artist impressions shown are not intended to represent any particular plot. Purchasers are advised to inspect the layout plan to establish the arrangement of the house and surrounding property. Internal layouts show a general arrangement which may vary from plot to plot. Room sizes given are approx. overall finished room sizes and subject to normal building tolerances (i.e. ± 75mm). In all instances purchasers are advised to inspect plot specific information available from our sales team. Nothing in these particulars or verbal assurance shall form or constitute part of any contract, and are given without any responsibility on behalf of Bloor Homes.