

TG

SALES & LETTINGS



1a Cotswold Green, , Stonehouse
Gloucestershire GL10 2ES

£365,000

- Three Bedrooms
- Large Kitchen/Breakfast Room
- Lounge
- Dining Room
- Conservatory
- Downstairs Bathroom
- Ensuite To Master
- Amazing Views

The Property

TG Sales & Lettings is excited to present this charming three-bedroom Semi-detached chalet bungalow to the market. Located on one of the most desirable roads in the area, on the outskirts of Stonehouse, this elevated position offers stunning views. It backs onto open countryside, surrounded by scenic walking trails.

Inside, the versatile layout begins with a welcoming, spacious hallway. At the front, there's a bright double bedroom, while the rear hosts a lounge with French doors opening to the garden. The impressive kitchen, complete with a bay window and fitted units, doubles as a dining area. A connected conservatory adds even more space to relax and soak in the views. The hallway also leads to a family bathroom, a convenient cloakroom, and a dining room with stairs to the upper floor.

You'll find two more double bedrooms upstairs, including a master with an ensuite bathroom.

The property features a good-sized garden at the rear that backs onto open fields, and there is a garage along with a driveway that provides parking for one car at the front. This lovely property is offered with no onward chain, ready for its new owner.

Awaiting EPC.



Situation

The property is situated just on the edge of Stonehouse town. Local facilities include a supermarket, restaurants, several banks, post office, primary and secondary schools. The town is close to the M5 motorway. Stonehouse railway station has a regular train service to London. The town is situated approximately three miles west of Stroud and twelve miles south of Gloucester.

Directions

From our office in the High Street in Stonehouse, continue along the High Street under the railway bridge, turning right onto Woodcock Lane and following the road. As you approach the mini roundabout, take a right and continue to the end of the road, where you will need to turn right onto Cotswold Green. The property will be found just on the left-hand side.

SATNAV postcode GL10 2ES

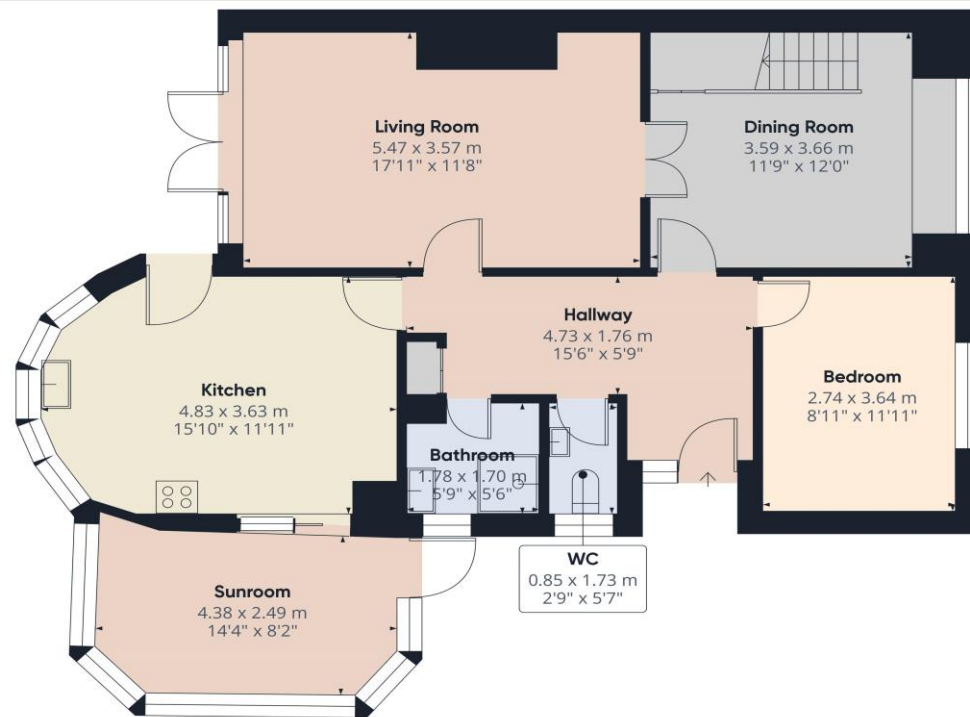
Tenure Freehold

Local Authority Stroud

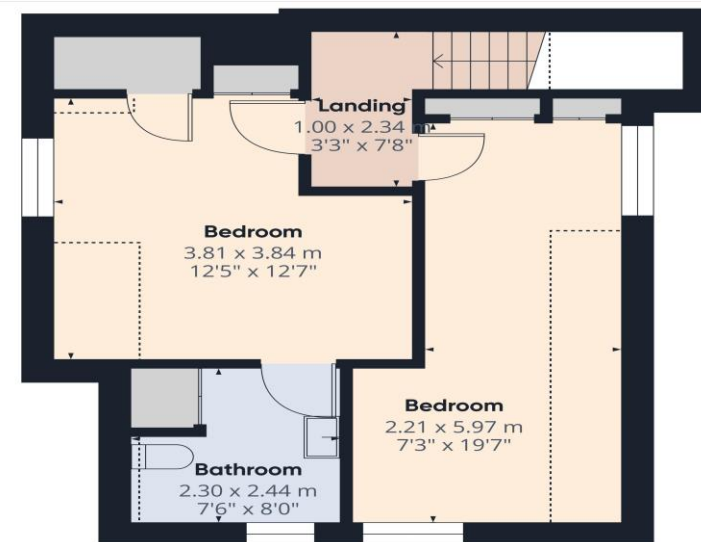
Services Electric, Mains Gas, Mains Drainage and Water are all believed to be connected to the property.

Council tax band C





Floor 0 Building 1



Floor 1 Building 1

Head Office
TG Sales & Lettings
48 Stroud Road
Gloucester
Gloucestershire
GL1 5AJ
Tel: 01452 311776
Email: info@tgres.co.uk
Website: www.tgres.co.uk

TG
SALES & LETTINGS

T G Sales & Lettings and any parties they are acting for hereby give you notice that: These details are for guidance only and cannot guarantee the accuracy of any description, dimension, condition or any required permission for occupation and use. It is not company policy to test any services or appliances in properties offered for sale and these should be verified by the purchaser's solicitors. T G Sales & Lettings will not be liable for any loss arising from the use of these details. No responsibility is taken for any errors, omissions or misstatements within these particulars. It should not be assumed that the property has all the necessary planning, building regulation or other consents. These particulars do not form any part of any offer or contract and must not be relied upon as statements or representations of fact. Buyers are advised to seek advice from their legal representation. T G Sales & Lettings is a limited liability partnership registered in England and Wales. Registered Number: 9763381 Registered Office: 48 Stroud Road, Gloucester, Gloucestershire, GL1 5AJ.