



fishneedwater
London property experts

2c Montem Road, London, SE23 1SA
£999 pcm

Offered in good condition is this two bedder on popular Montem Road, a short walk from Catford and Catford Bridge stations. Can be offered part furnished with larger items.





Property Features

- Recently decorated throughout
- First floor flat
- One way street
- 12 minutes to London by train
- Period conversion
- Two bedrooms
- New carpets throughout
- Can be part furnished with larger items
- Offers in excess of £999pcm
-



Property Description

A brilliant two bedder situated in a period building on popular Montem Road, a one way street located about 10 minutes by foot to both Catford train stations offering commutes to London within 10 minutes.

Offered either unfurnished or part-furnished with larger items, the property has recently undergone a full re-decoration with new carpets laid throughout.

Please see the attached floor-plans for the room dimensions and property layout.

Offers in excess of £999pcm.



Tenure

%tenure%



Council Tax Band

Tax Band B

Council Tax Cost

£1,057.28

Local Authority

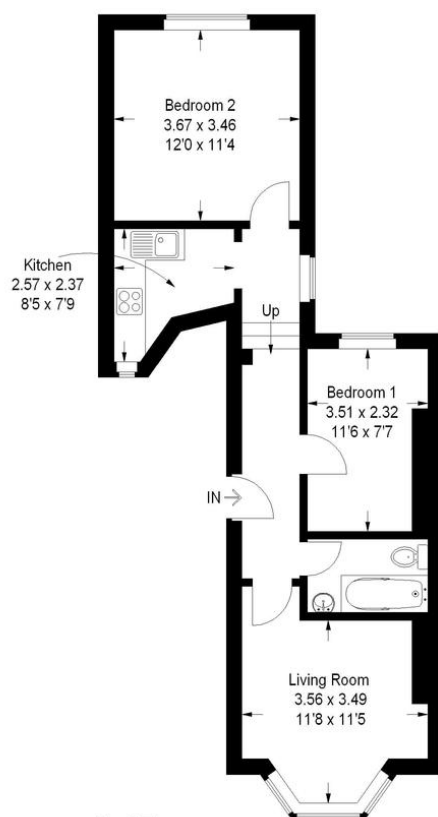
Lewisham London Borough Council



Montem Road, SE23



Approximate Gross Internal Area
50 sq m / 538 sq ft



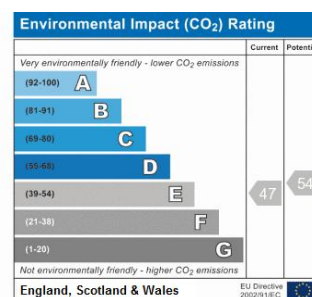
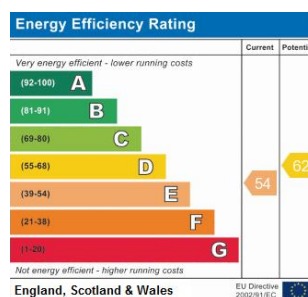
First Floor

This plan is for layout guidance only. Not drawn to scale unless stated. Windows and door openings are approximate. Whilst every care is taken in the preparation of this plan, please check all dimensions, shapes and compass bearings before making any decisions reliant upon them. (ID54050)

**Do you want to know what
your property is worth?**

Find out in less than a minute with a
FREE instant valuation by visiting
www.fishneedwater.com

No need to spend 30 minutes with an annoying agent
3 simple steps in just 30 seconds
A full detailed report emailed to you (free)



Agents Note: Whilst every care has been taken to prepare these sales particulars, they are for guidance purposes only. All measurements are approximate and are for general guidance purposes only and whilst every care has been taken to ensure their accuracy, they should not be relied upon and potential buyers are advised to