



Perfect PLACE For Retirement

## 25 Hazelmere Winsford

Welcome to Hazelmere, where your golden years shine brighter than ever before!  
Nestled in the picturesque landscapes of rural Cheshire, Hazelmere over 55's assisted living offers more than just a place to retire – it's a vibrant community where every moment is cherished and every day is filled with joy.

## Features

Imagine waking up to the warm embrace of a community where friendships blossom and laughter echoes through the halls.

- ✓ 2 Bedroom Apartment
- ✓ Bathroom with walk in shower
- ✓ Balcony with Patio Doors
- ✓ Gym, Hobby Room
- ✓ Living Room
- ✓ Kitchen
- ✓ Shared Garden
- ✓ Community Space

OFFERS AROUND

£95,000



MASTER BEDROOM



LIVING ROOM



KITCHEN



# LIVING YOUR BEST LIFE

Imagine waking up to the warm embrace of a community where friendships blossom and laughter echoes through the halls. Here, you'll find not just a home, but a haven where you can live life to the fullest, surrounded by like-minded individuals who share either your zest for adventure or quieter times surrounded by beautiful grounds and books.

## EXPERIENCE LIFE TO THE FULLEST

Retirement doesn't have to be about slowing down; it's about embracing new experiences and seizing every opportunity that comes your way.

Start your day with a stroll through the lush gardens, bask in the serenity of the winter garden, or indulge your senses in the soothing sensory room.

Feeling adventurous? Join your neighbors on a day trip to explore the charming villages and scenic wonders of Cheshire. Or perhaps you prefer a quiet afternoon in the cozy library, lost in the pages of your favorite book.

This property allows you to lock up and leave with the peace of mind that your precious belongings are safe and secure should you wish to go on holiday or visit family.



WELCOME  
TO YOUR NEW  
PLACE



YOUR OWN LITTLE HEAVEN



## AMENITIES TO ENRICH YOUR LIFE

The magic of Hazelmere doesn't stop there. With a wide array of amenities at your fingertips, including a fully-equipped gym, hobby room, and community center, there's always something exciting to do.

When it's time to unwind, the on-site restaurant beckons with delectable cuisine that tantalizes the taste buds. Gather with friends old and new for a delightful dinner, or savor a quiet moment of reflection in the comfort of your own apartment.

## PERSONALIZED CARE AND SUPPORT

We understand that your golden years are precious, Hazelmere offers personalized care and support packages tailored to your unique needs. The dedicated onsite team is committed to ensuring that you enjoy the highest quality of life, with the freedom to live on your own terms with 24/7 support on hand should you need it.

## YOUR NEW HOME AWAITS

This wonderfully spacious 2 bedroom apartment is light and bright with a lovely aspect. Located on the 2nd floor, perfect for sitting on the balcony with a cup of tea and a book overlooking the beautiful green open space in front.

The bathroom is large with a walk-in shower to allow for easy wheelchair access if needed.

Through to a well-proportioned living room with a patio door on to the private balcony with space for a dining table.

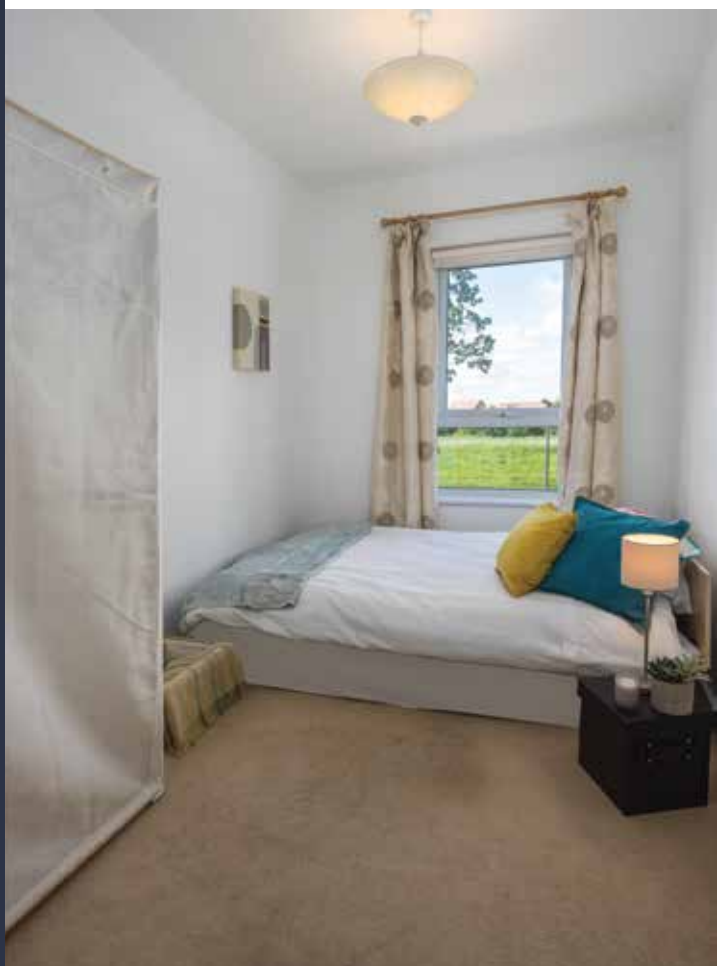
The kitchen is well equipped with an electric oven, fridge freezer, and ample wall and under-counter storage.

The property is carpeted throughout with anti-slip flooring in the bathroom and lino to the kitchen.

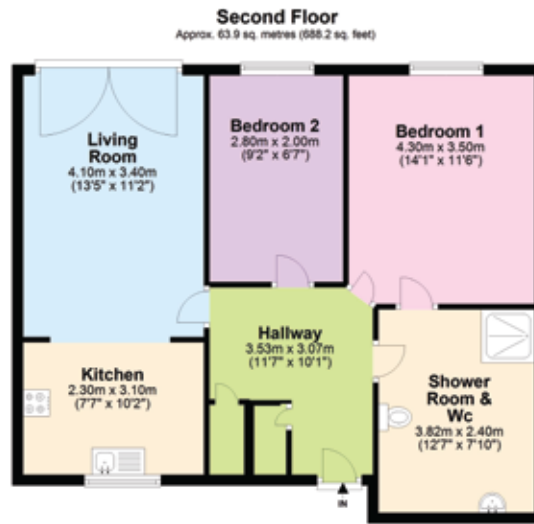
There is ample storage in the large open hallway.



## COSY & WARM HOME!



## FLOOR PLAN



Total area: approx. 63.9 sq. metres (688.2 sq. feet)

### DISCLAIMER SUMMARY: PROPERTY INFORMATION

Our sales particulars are a general guide to the property and are for descriptive purposes only, and may not entirely be accurate. For specific details, please contact us, especially if you are traveling a long distance to view the property.

Measurements provided are for guidance only, and we recommend commissioning your own surveys. These particulars are issued in good faith but do not form part of any offer or contract.

Potential buyers must verify all information independently. Neither LaDelfa Estates Limited nor its employees or agents provide any representation or warranty regarding the property.

### Energy rating and score

This property's energy rating is B. It has the potential to be B.

[See how to improve this property's energy efficiency.](#)

Score	Energy rating	Current	Potential
92+	A		
81-91	B	84 B	85 B
69-80	C		
55-68	D		
39-54	E		
21-38	F		
1-20	G		

The graph shows this property's current and potential energy rating.

Properties get a rating from A (best) to G (worst) and a score. The better the rating and score, the lower your energy bills are likely to be.

For properties in England and Wales:

- the average energy rating is D
- the average energy score is 60