

Collyer Road

London Colney, AL2 1PD



Collyer Road

London Colney, AL2 1PD

£500,000

- No Upper Chain
- Three Generously Sized Bedrooms
 - Mid Terrace
- In Need of Some Modernisation
 - Extension Potential (S.T.P.P)
 - 90ft Rear Garden Approx.
- Walking Distance to Local Amenities
 - Large Driveway
 - Quiet Cul De Sac Location
 - Council Tax Band D





Collyer Road

London Colney, AL2 1PD

Discover this spacious mid-terrace property in the heart of London Colney, offering a fantastic opportunity for those looking to create their dream home. With 1,198.2 sq. feet of living space, this home features two generous double bedrooms and a large single bedroom, making it perfect for families or those in need of extra space.

The property includes a well-maintained wet room, a separate W/C, and an additional downstairs W/C located towards the rear of the house, providing convenience for everyday living. A unique feature of this home is the lean-to, which offers direct access from the front to the rear garden, complete with two well-proportioned storage cupboards and the downstairs W/C.

Though the property has been well-kept and retains its structural integrity, it presents an exciting refurbishment opportunity to modernise and personalise to your taste. The 90ft garden provides ample outdoor space for relaxation, gardening, or entertaining.

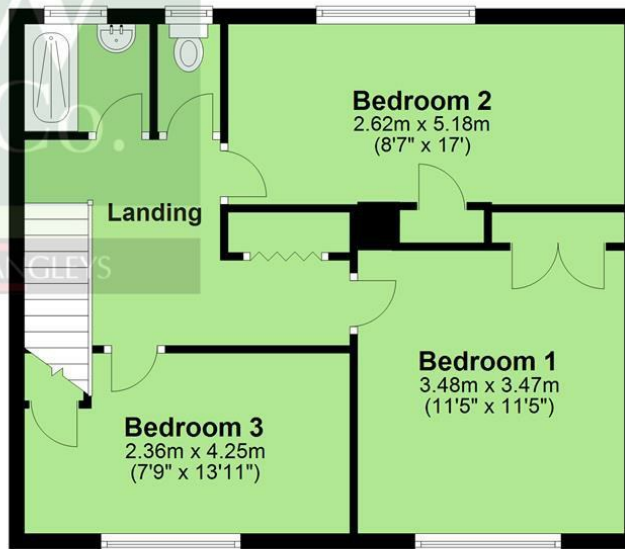
For added convenience, the property boasts a front drive with ample parking space for multiple cars. Situated close to local amenities and with easy access to the M25 and M1, this home is perfectly positioned for both convenience and connectivity.



Ground Floor
Approx. 58.2 sq. metres (626.4 sq. feet)



First Floor
Approx. 53.1 sq. metres (571.8 sq. feet)



Total area: approx. 111.3 sq. metres (1198.2 sq. feet)



JW&Co St Albans
3 London Road, St Albans, Hertfordshire, AL1 1LA
01727 844444
stalbans@jwandco.co.uk

Entrance Hallway

Living Room
11'5" x 14'7" (3.49 x 4.45)

Dining Room
10'1" x 9'1" (3.09 x 2.79)

Kitchen
10'1" x 11'9" (3.08 x 3.60)

Bedroom 1
11'5" x 11'4" (3.48 x 3.47)

Bedroom 2
8'7" x 16'11" (2.62 x 5.18)

Bedroom 3
7'8" x 13'11" (2.36 x 4.25)

Wet Room

EPC
Rating D



Energy Efficiency Rating		Current	Potential
Very energy efficient - lower running costs			
(92 plus) A			84
(81-91) B			
(69-80) C			
(55-68) D		64	
(39-54) E			
(21-38) F			
(1-20) G			
Not energy efficient - higher running costs			
England & Wales		EU Directive 2002/91/EC	

Environmental Impact (CO ₂) Rating		Current	Potential
Very environmentally friendly - lower CO ₂ emissions			
(92 plus) A			84
(81-91) B			
(69-80) C			
(55-68) D			
(39-54) E			
(21-38) F			
(1-20) G			
Not environmentally friendly - higher CO ₂ emissions			
England & Wales		EU Directive 2002/91/EC	

In accordance with the Consumer Protection from Unfair Trading Regulations 2008 (CPRs) and the Business Protection from Misleading Markets Regulations 2008 (BPRs) JW&CO have prepared these property particulars as a general guide to a broad description of the property. JW&CO as agents for the vendor or lessor and for themselves give notice that (a) these particulars are not intended to constitute part of an offer or contract (b) have not carried out a structural survey and the services, appliances and fittings have not been tested (c) all measurements, photographs, distances and floor plans referred to are given as a guide only and should not be relied upon for the purchase of fixtures and fittings (d) tenure details, service charges and ground rent (where applicable) are given as a guide only and should be checked and confirmed by your solicitor prior to exchange of contracts (e) neither the vendor nor any person in the employment JW&CO has any authority to make or give any representation or warranty whatsoever in respect of the property.