

Hermitage Court, Oadby

£150,000

Offered with NO CHAIN, this TWO BEDROOM first floor flat is situated within Hermitage Court. Outside enjoys gated communal grounds and communal parking. Perfect investment or first time purchase.

Council Tax band: B

Tenure: Leasehold

EPC Energy Efficiency Rating: B





Entrance Hall

With two storage cupboards, radiator.

Open Plan Living Kitchen

21' 2" x 13' 11" (6.45m x 4.23m)

With double glazed French doors to the side and rear elevations leading to Juliet balconies, double glazed window to the rear elevation, part carpet floor, part laminate floor, wall and base units with work surface over, sink and drainer, integrated oven and hob, extractor hood, integrated dishwasher, plumbing for washing machine, part tiled walls, two radiators.

Bedroom One

10' 11" x 8' 8" (3.32m x 2.64m)

With double glazed window to the side elevation, carpet floor, storage cupboard, radiator.

**En-Suite**

6' 8" x 5' 1" (2.03m x 1.54m)

With tiled floor, part tiled walls, shower cubicle, low-level WC, wash hand basin, ladder towel rail/radiator.

Bedroom Two

10' 4" x 8' 10" (3.14m x 2.70m)

Measurement into wardrobes. With double glazed window to the side elevation, fitted wardrobes, carpet floor, radiator.

Bathroom

7' 2" x 6' 4" (2.19m x 1.92m)

With tiled floor, part tiled walls, bath, wash hand basin, low-level WC, ladder towel rail/radiator.

Parking

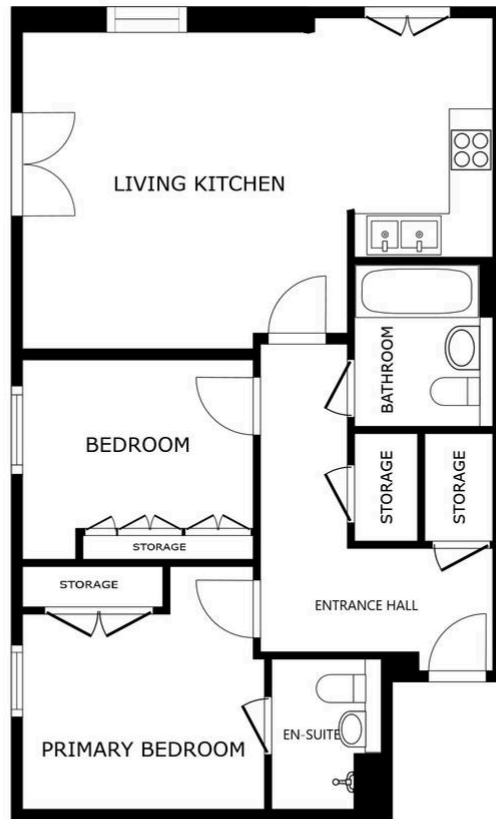
Communal and visitors parking.

Lease Details

Current Ground Rent: £250

Current Service Charge: £2,400 per annum (paid twice a year)

Length of Lease: 79 years remaining



FLOOR PLAN

SIZES AND DIMENSIONS ARE APPROXIMATE, ACTUAL MAY VARY.



We'll keep you moving...



We must inform all prospective purchasers that the measurements are taken by an electronic tape and are provided as a guide only and they should not be used as accurate measurements. We have not tested any mains services, gas or electric appliances, or fixtures and fittings mentioned in these details, therefore, prospective purchasers should satisfy themselves before committing to purchase. Intending purchasers must satisfy themselves by inspection or otherwise to the correctness of the statements contained in these particulars. Knightsbridge Estate Agents & valuers (nor any person in their employment) has any authority to make any representation or warranty in relation to the property.' The floor plans are not to scale, and are intended for use as a guide to the layout of the property only. They should not be used for any other purpose. Similarly, the plans are not designed to represent the actual décor found at the property in respect of flooring, wall coverings or fixtures and fittings.