

Vandyke Road, Oadby

£290,000

A CHAIN FREE three bedroom semi-detached family home featuring CHARMING front and rear gardens. The home required some UPDATING and modernisation, but provides great potential.

Council Tax band: C

Tenure: Freehold

Energy Efficiency Rating: D





Entrance Porch

With double glazed door and windows to the front elevation, door leading to entrance hall.

Entrance Hall

With stairs to first floor, radiator.

L-Shaped Lounge Diner

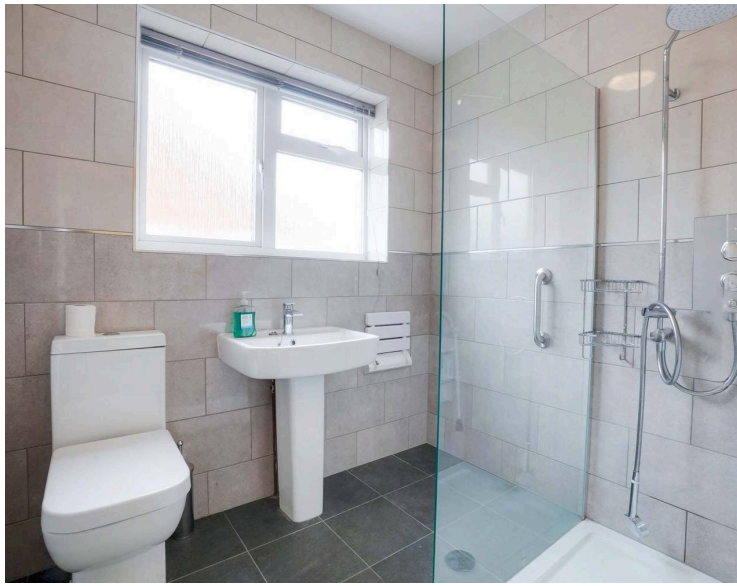
16' 10" x 10' 10" (5.13m x 3.30m)

Measurement also 3.74 m x 2.40 m. With double glazed windows to the rear elevation, double glazed French doors to the rear elevation, chimney breast with gas fire, tiled surround and hearth, ceiling coving, TV point, radiator.

Kitchen

11' 10" x 7' 11" (3.61m x 2.42m)

With double glazed windows to the side elevation, double glazed door to the side elevation, wall and base units with work surface over, stainless steel sink and drainer, part tiled walls, vinyl floor, gas cooker point, space for fridge freezer, under stairs storage cupboard, gas boiler, plumbing for washing machine.



Ground Floor WC

With double glazed window to the front elevation, low-level WC, wash hand basin, part tiled walls.

First Floor Landing

With double glazed window to the front elevation, loft access.

Bedroom One

13' 1" x 9' 11" (4.00m x 3.03m)

With double glazed window to the rear elevation, built-in cupboard, radiator.

Bedroom Two

12' 6" x 9' 1" (3.80m x 2.77m)

With double glazed window to the rear elevation, wooden floor, radiator.

Bedroom Three

10' 2" x 10' 2" (3.09m x 3.09m)

Measurement narrowing to 2.55 m. With double glazed window front elevation, radiator.

Shower Room

6' 9" x 5' 6" (2.07m x 1.68m)

With double glazed window to the side elevation, shower cubicle, low-level WC, wash hand basin, tiled walls, tiled floor, ladder style towel rail/radiator.

Front Garden

A low maintenance front garden with gravelled area, lawn, flowerbeds and shrubs.

Rear Garden

With paved patio seating area, lawn, flowerbeds and shrubs, walled and fenced perimeter, shed.

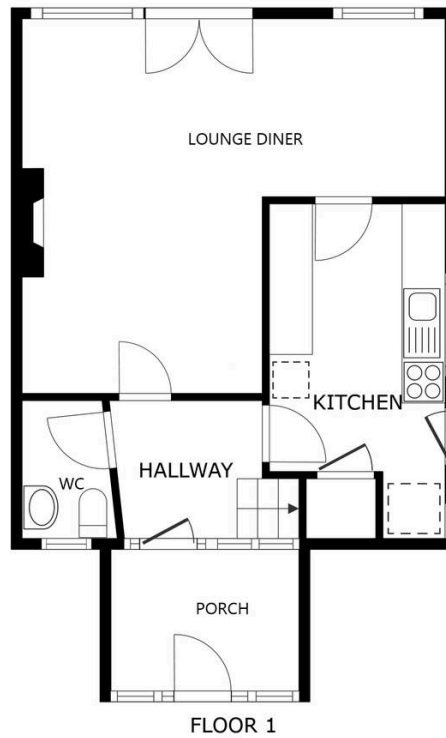
Driveway

1 vehicle

Garage

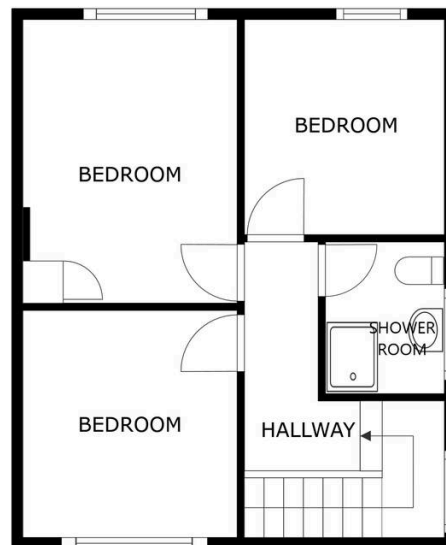
1 vehicle

Please note that parking within the garage is subject to vehicle size. Prospective purchasers should ensure the dimensions are suitable for their vehicle before relying on it for parking purposes.



FLOOR 1

SIZES AND DIMENSIONS ARE APPROXIMATE, ACTUAL MAY VARY.



FLOOR 2

SIZES AND DIMENSIONS ARE APPROXIMATE, ACTUAL MAY VARY.



We'll keep you moving...



We must inform all prospective purchasers that the measurements are taken by an electronic take and are provided as a guide only and they should not be used as accurate measurements. We have not tested any mains services, gas or electric appliances, or fixtures and fittings mentioned in these details, therefore, prospective purchasers should satisfy themselves before committing to purchase. Intending purchasers must satisfy themselves by inspection or otherwise to the correctness of the statements contained in these particulars. Knightsbridge Estate Agents (nor any person in their employment) has any authority to make any representation or warranty in relation to the property. The floor plans are not to scale, and are intended for use as a guide to the layout of the property only. They should not be used for any other purpose. We are required by law to conduct anti-money laundering checks on all those selling or buying a property. Whilst we retain responsibility for ensuring checks and any ongoing monitoring are carried out correctly, the initial checks are carried out on our behalf by Lifetime Legal who will contact you once you have agreed to instruct us in your sale or had an offer accepted on a property you wish to buy. The cost of these checks is £60 (incl. VAT), which covers the cost of obtaining relevant data and any manual checks and monitoring which might be required. This fee will need to be paid by you in advance of us publishing your property (in the case of a vendor) or issuing a memorandum of sale (in the case of a buyer), directly to Lifetime Legal, and is non-refundable. We will receive some of the fee taken by Lifetime Legal to compensate for its role in the provision of these checks.