

Hyde Close, Oadby

£300,000

With wrap around private gardens, this THREE BEDROOM semi-detached home features a driveway leading to a GARAGE. Once inside you are greeted by two reception rooms and a kitchen.

Council Tax band: C

Tenure: Freehold

EPC Efficiency Rating: C





Entrance Porch

With double glazed patio doors to the front elevation, tiled floor.

Entrance Hall

With double glazed window and door to the front elevation, meter cupboard, stairs to first floor, under stairs storage, laminate floor, radiator.

Lounge

16' 6" x 14' 5" (5.03m x 4.39m)

With double glazed windows to the front and side elevations, doors leading to dining room, carpet floor, gas fire, radiator.

Dining Room

9' 8" x 8' 3" (2.95m x 2.51m)

With double glazed French doors to the side elevation, radiator.



Kitchen

11' 0" x 8' 3" (3.35m x 2.51m)

With double glazed window to the side elevation, double glazed door to the side elevation, tiled floor, part tiled walls, integrated oven and hob, wall and base units with work surface over, sink and drainer, space for washing machine, space for fridge freezer, storage pantry.

First Floor Landing

With double glazed window to the side elevation, carpet floor.

Bedroom One

11' 7" x 9' 6" (3.53m x 2.90m)

With double glazed window to the side elevation, carpet floor, radiator.

Bedroom Two

10' 11" x 10' 7" (3.33m x 3.23m)

Measurement up to wardrobes. With double glazed window to the side elevation, fitted wardrobes (one housing gas boiler), carpet floor, radiator.

Bedroom Three

8' 2" x 7' 1" (2.49m x 2.16m)

With double glazed window to the front elevation, carpet floor, radiator.

Bathroom

7' 0" x 6' 0" (2.13m x 1.83m)

With double glazed window to the side elevation, vinyl floor, part tiled walls, wash hand basin, low-level WC, bath with electric shower over, radiator.

Front Garden

With paved patio area, lawn, hedging providing privacy.

Rear Garden

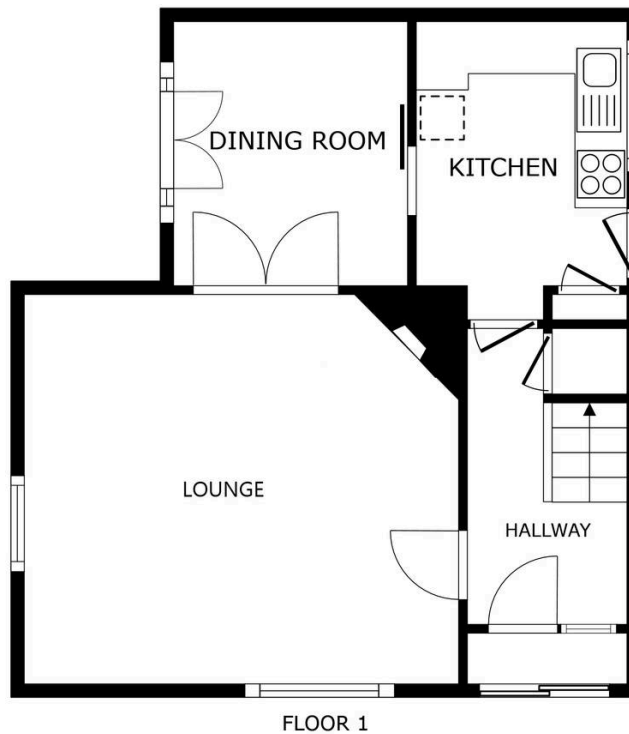
With paved patio area, lawn, fenced and hedged perimeter, access to garage, shed.

Garage

Measuring 17'8" x 8'3".

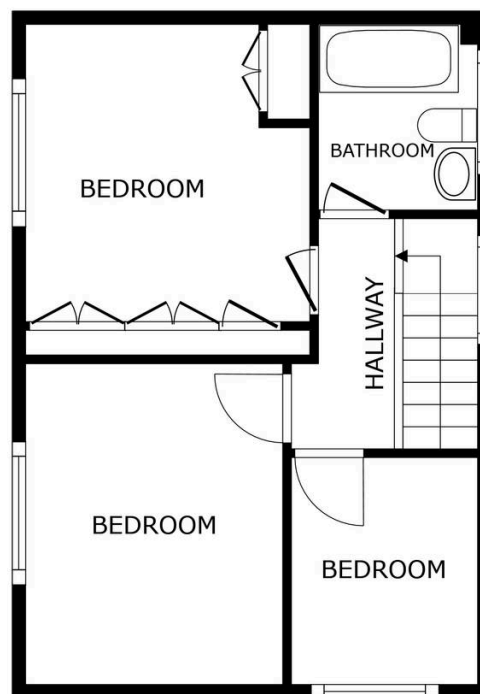
Driveway

1 vehicle.



FLOOR 1

SIZES AND DIMENSIONS ARE APPROXIMATE, ACTUAL MAY VARY.



FLOOR 2

SIZES AND DIMENSIONS ARE APPROXIMATE, ACTUAL MAY VARY.



We'll keep you moving...



We must inform all prospective purchasers that the measurements are taken by an electronic take and are provided as a guide only and they should not be used as accurate measurements. We have not tested any mains services, gas or electric appliances, or fixtures and fittings mentioned in these details, therefore, prospective purchasers should satisfy themselves before committing to purchase. Intending purchasers must satisfy themselves by inspection or otherwise to the correctness of the statements contained in these particulars. Knightsbridge Estate Agents (nor any person in their employment) has any authority to make any representation or warranty in relation to the property. The floor plans are not to scale, and are intended for use as a guide to the layout of the property only. They should not be used for any other purpose. We are required by law to conduct anti-money laundering checks on all those selling or buying a property. Whilst we retain responsibility for ensuring checks and any ongoing monitoring are carried out correctly, the initial checks are carried out on our behalf by Lifetime Legal who will contact you once you have agreed to instruct us in your sale or had an offer accepted on a property you wish to buy. The cost of these checks is £60 (incl. VAT), which covers the cost of obtaining relevant data and any manual checks and monitoring which might be required. This fee will need to be paid by you in advance of us publishing your property (in the case of a vendor) or issuing a memorandum of sale (in the case of a buyer), directly to Lifetime Legal, and is non-refundable. We will receive some of the fee taken by Lifetime Legal to compensate for its role in the provision of these checks.