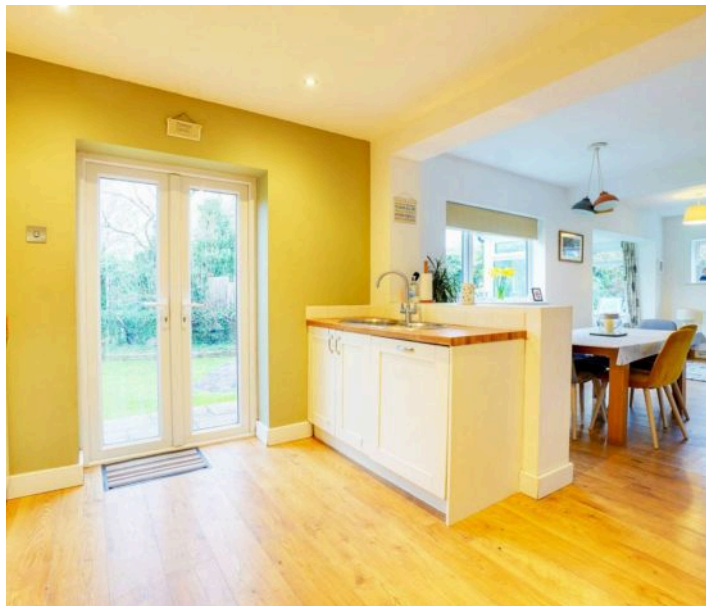


## Hermitage Close, Oadby

In Excess of £435,000

Located within Hermitage Close enjoying a CUL-SE-SAC position is this four bedroom detached family home including TWO RECEPTION ROOMS and FOUR BEDROOMS, one of which is a ground floor bedroom.





#### Entrance Hall

With window and door to the front elevation, oak floor, stairs to first floor, built-in cloaks cupboard, radiator.

#### Ground Floor WC

With window to the front elevation, oak floor, low-level WC, wash hand basin, part tiled walls.

#### Living Room

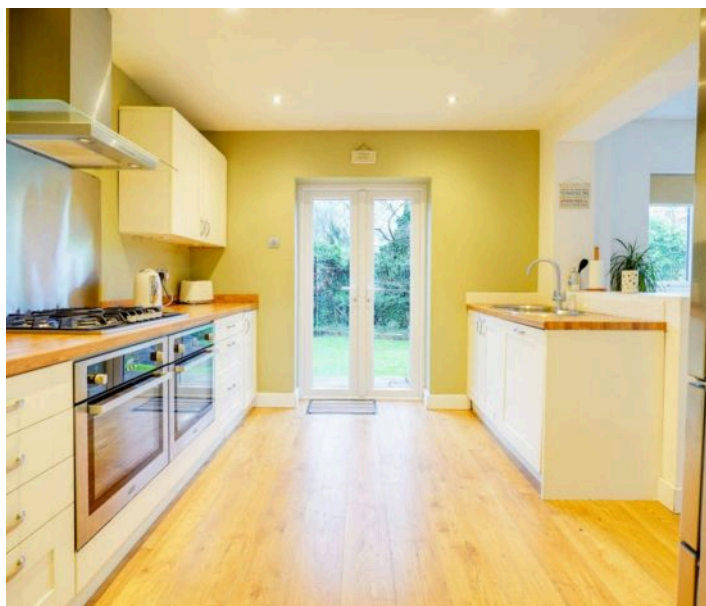
16' 6" x 11' 0" (5.03m x 3.35m)

With windows to the side and rear elevations, fitted fireplace, TV point, ceiling coving, radiator.

#### Dining Area

21' 0" x 8' 10" (6.40m x 2.69m)

Measurement maximising to 13'5". With windows to the rear and side elevations, oak floor, TV point, built-in cupboard, two radiators, open access leading to:



#### Kitchen

10' 10" x 9' 10" (3.30m x 3.00m)

With French doors leading to rear garden, oak floor, a range of wall and base units with solid wood work surfaces over, stainless steel sink, drainer and mixer tap, inset five ring gas hob and double oven, extractor hood, stainless steel splash back, integrated dishwasher, space for freestanding fridge freezer, door leading to:



### Utility Room

15' 5" x 6' 5" (4.70m x 1.96m)

Irregular shape. With door to the front elevation, ceramic tiled floor, base unit with work surface over, plumbing for washing machine ,space for tumble dryer, door leading to:

### Study/Potential Bedroom

16' 7" x 7' 8" (5.05m x 2.34m)

With window to the front and rear elevations, radiator.

### First Floor Landing

With window to the side elevation, loft access.

### Bedroom One

13' 5" x 11' 0" (4.09m x 3.35m)

With windows to the front and side elevations, built-in wardrobes with overhead storage and drawers, radiator.

### Bedroom Two

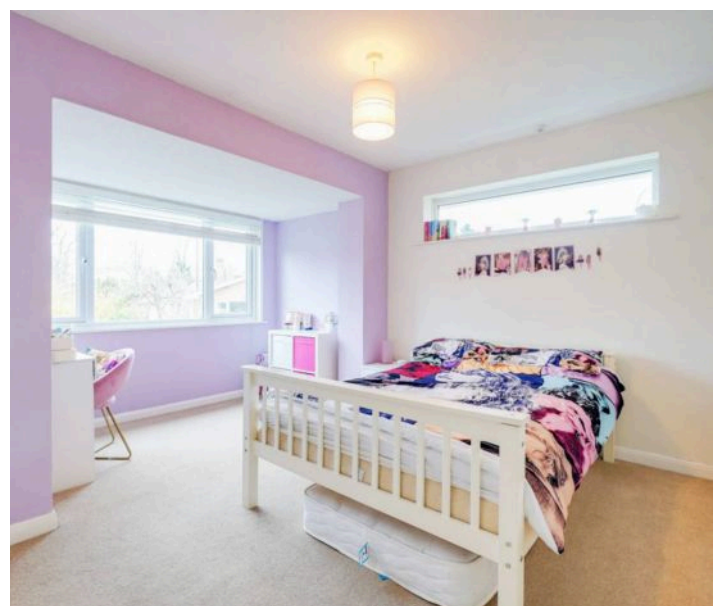
14' 2" x 12' 7" (4.32m x 3.84m)

Measurement narrowing to 9'2". With windows to the rear and side elevations, built-in wardrobes, built-in storage, radiator.

### Bedroom Three

9' 7" x 8' 5" (2.92m x 2.57m)

With window to the front elevation, built-in wardrobes, radiator.









### **Bathroom**

8' 0" x 5' 6" (2.44m x 1.68m)

With window to the rear elevation, ceramic tiled floor, bath with shower over and shower screen, low-level WC, wash hand basin with storage below, tiled walls, chrome ladder towel rail/radiator.

### **Front Garden**

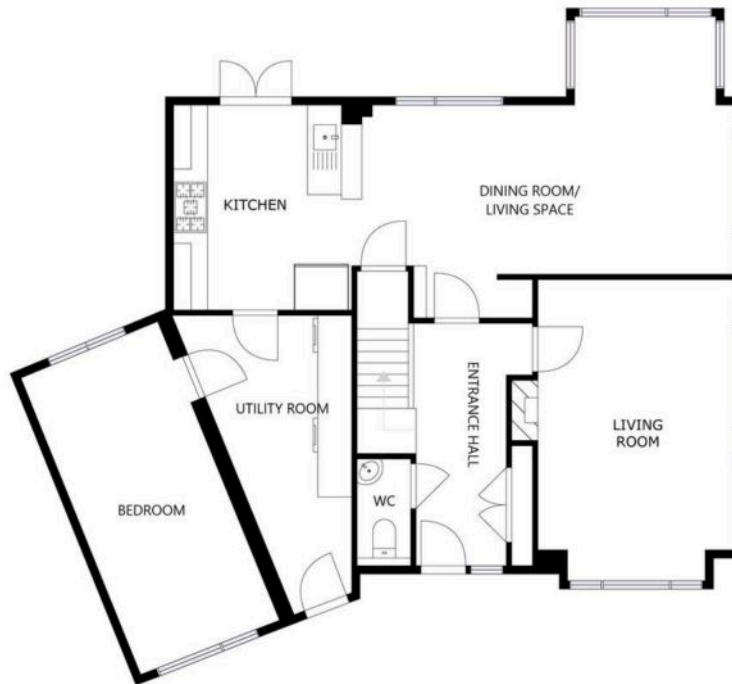
Well maintained front garden.

### **Rear Garden**

With paved patio seating area, steps leading down to a lawn, flowerbeds and shrubs, paved pathway leading to the rear, shed.

### **Driveway**

To the front elevation.



FLOOR 1



FLOOR 2





The property is ideally situated for Oadby's highly regarded schools and nearby bus links running into Leicester City Centre with its professional quarters and train station. A wide range of amenities are available along The Parade in nearby Oadby Town Centre, along with three mainstream supermarkets and further leisure/recreational facilities including Leicester Racecourse, University of Leicester Botanic Gardens and Parklands Leisure Centre and Glen Gorse Golf Club.

Council Tax band: D

Tenure: Freehold

EPC Energy Efficiency Rating: D

**We'll keep you moving...**



We must inform all prospective purchasers that the measurements are taken by an electronic take and are provided as a guide only and they should not be used as accurate measurements. We have not tested any mains services, gas or electric appliances, or fixtures and fittings mentioned in these details, therefore, prospective purchasers should satisfy themselves before committing to purchase. Intending purchasers must satisfy themselves by inspection or otherwise to the correctness of the statements contained in these particulars. Knightsbridge Estate Agents (nor any person in their employment) has any authority to make any representation or warranty in relation to the property. The floor plans are not to scale, and are intended for use as a guide to the layout of the property only. They should not be used for any other purpose. We are required by law to conduct anti-money laundering checks on all those selling or buying a property. Whilst we retain responsibility for ensuring checks and any ongoing monitoring are carried out correctly, the initial checks are carried out on our behalf by Lifetime Legal who will contact you once you have agreed to instruct us in your sale or had an offer accepted on a property you wish to buy. The cost of these checks is £60 (incl. VAT), which covers the cost of obtaining relevant data and any manual checks and monitoring which might be required. This fee will need to be paid by you in advance of us publishing your property (in the case of a vendor) or issuing a memorandum of sale (in the case of a buyer), directly to Lifetime Legal, and is non-refundable. We will receive some of the fee taken by Lifetime Legal to compensate for its role in the provision of these checks.