



Garfield Park, Great Glen

Offers Over £300,000

A WELL PRESENTED and MODERN three-bedroom semi-detached home, ideally located in the desirable village of Great Glen, on Garfield Park. The property offers practical and comfortable living space.

Council Tax band: B

Tenure: Freehold

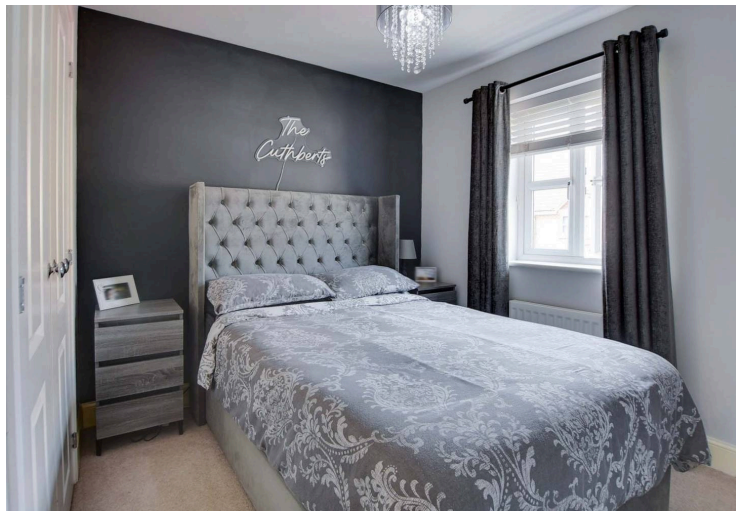
EPC Energy Efficiency Rating: B

EPC Environmental Impact Rating:



0116 271 3333





Entrance Hall

With double glazed door, laminate floor, stairs to first floor, radiator.

Ground Floor WC

6' 9" x 3' 0" (2.06m x 0.91m)

With double glazed window to the front elevation, laminate floor, wash hand basin, low-level WC, radiator.

Kitchen

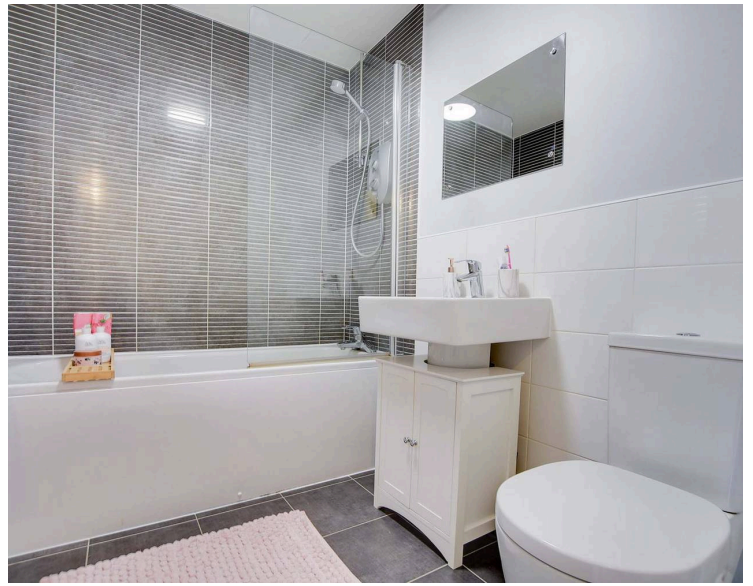
10' 6" x 7' 8" (3.20m x 2.34m)

With double glazed window to the front elevation, wall and base units with work surface over, laminate floor, fitted double oven, inset hob with filter hood over, integrated fridge freezer, integrated dishwasher, one and a half bowl sink and drainer unit, part tiled walls, laminate floor, radiator.

Lounge

16' 8" x 14' 9" (5.08m x 4.50m)

With double glazed French doors to the rear elevation, double glazed window to the rear elevation, carpet floor, storage cupboard, two radiators.



First Floor Landing

With carpet floor, storage cupboard.

Bedroom One

10' 6" x 8' 3" (3.20m x 2.51m)

With double glazed window to the front elevation, fitted wardrobes, carpet floor, radiator.

En-Suite Shower Room

6' 8" x 6' 3" (2.03m x 1.91m)

With double glazed window to the front elevation, part tiled walls, tiled floor, walk-in shower cubicle, low-level WC, wash hand basin, radiator.

Bedroom Two

10' 9" x 7' 9" (3.28m x 2.36m)

With double glazed window to the rear elevation, carpet floor, radiator.

Bedroom Three

7' 2" x 6' 8" (2.18m x 2.03m)

With double glazed window to the rear elevation, carpet floor, radiator.

Bathroom

7' 9" x 5' 7" (2.36m x 1.70m)

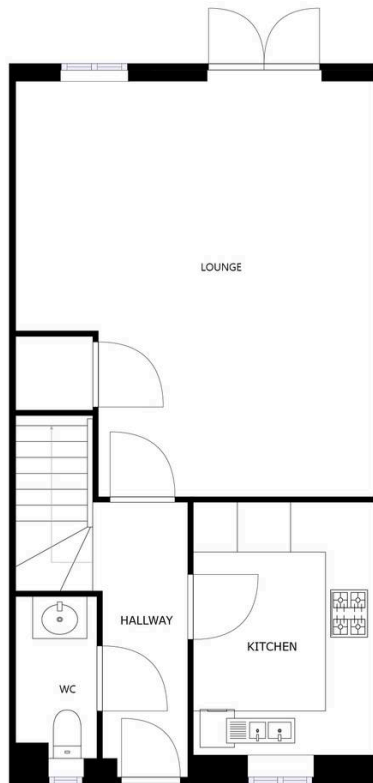
With tiled floor, part tiled walls, wash hand basin, low-level WC, bath with overhead electric shower, wall mounted towel rail/radiator.

Front Garden

Small frontage with paved pathway, shrubs, lawn.

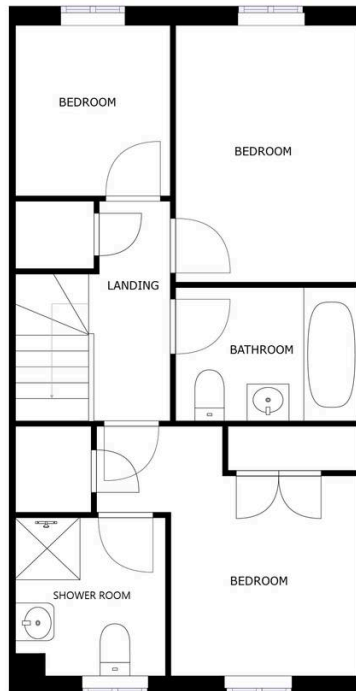
Rear Garden

With lawn, paved patio area.



FLOOR 1

SIZES AND DIMENSIONS ARE APPROXIMATE, ACTUAL MAY VARY.



FLOOR 2

SIZES AND DIMENSIONS ARE APPROXIMATE, ACTUAL MAY VARY.



We'll keep you moving...



We must inform all prospective purchasers that the measurements are taken by an electronic take and are provided as a guide only and they should not be used as accurate measurements. We have not tested any mains services, gas or electric appliances, or fixtures and fittings mentioned in these details, therefore, prospective purchasers should satisfy themselves before committing to purchase. Intending purchasers must satisfy themselves by inspection or otherwise to the correctness of the statements contained in these particulars. Knightsbridge Estate Agents (nor any person in their employment) has any authority to make any representation or warranty in relation to the property. The floor plans are not to scale, and are intended for use as a guide to the layout of the property only. They should not be used for any other purpose. We are required by law to conduct anti-money laundering checks on all those selling or buying a property. Whilst we retain responsibility for ensuring checks and any ongoing monitoring are carried out correctly, the initial checks are carried out on our behalf by Lifetime Legal who will contact you once you have agreed to instruct us in your sale or had an offer accepted on a property you wish to buy. The cost of these checks is £60 (incl. VAT), which covers the cost of obtaining relevant data and any manual checks and monitoring which might be required. This fee will need to be paid by you in advance of us publishing your property (in the case of a vendor) or issuing a memorandum of sale (in the case of a buyer), directly to Lifetime Legal, and is non-refundable. We will receive some of the fee taken by Lifetime Legal to compensate for its role in the provision of these checks.