



Eden Close, Oadby

£500,000

A GENEROUS SIZE PLOT presenting a FOUR BEDROOM detached home offered for sale with NO UPWARD CHAIN. Outside enjoys beautiful front garden wrapping itself around the to the side.





Entrance Hall

With double glazed windows and door to the front elevation, carpet floor, radiator.

Ground Floor WC/Cloaks

6' 1" x 3' 9" (1.85m x 1.14m)

With double glazed window to the rear elevation, wash hand basin, low-level WC, part tiled walls, carpet floor, radiator.

Dining Room

17' 5" x 10' 7" (5.31m x 3.23m)

With double glazed sliding patio doors to the rear elevation, carper floor, storage cupboard, stairs to first floor, radiator.

Lounge

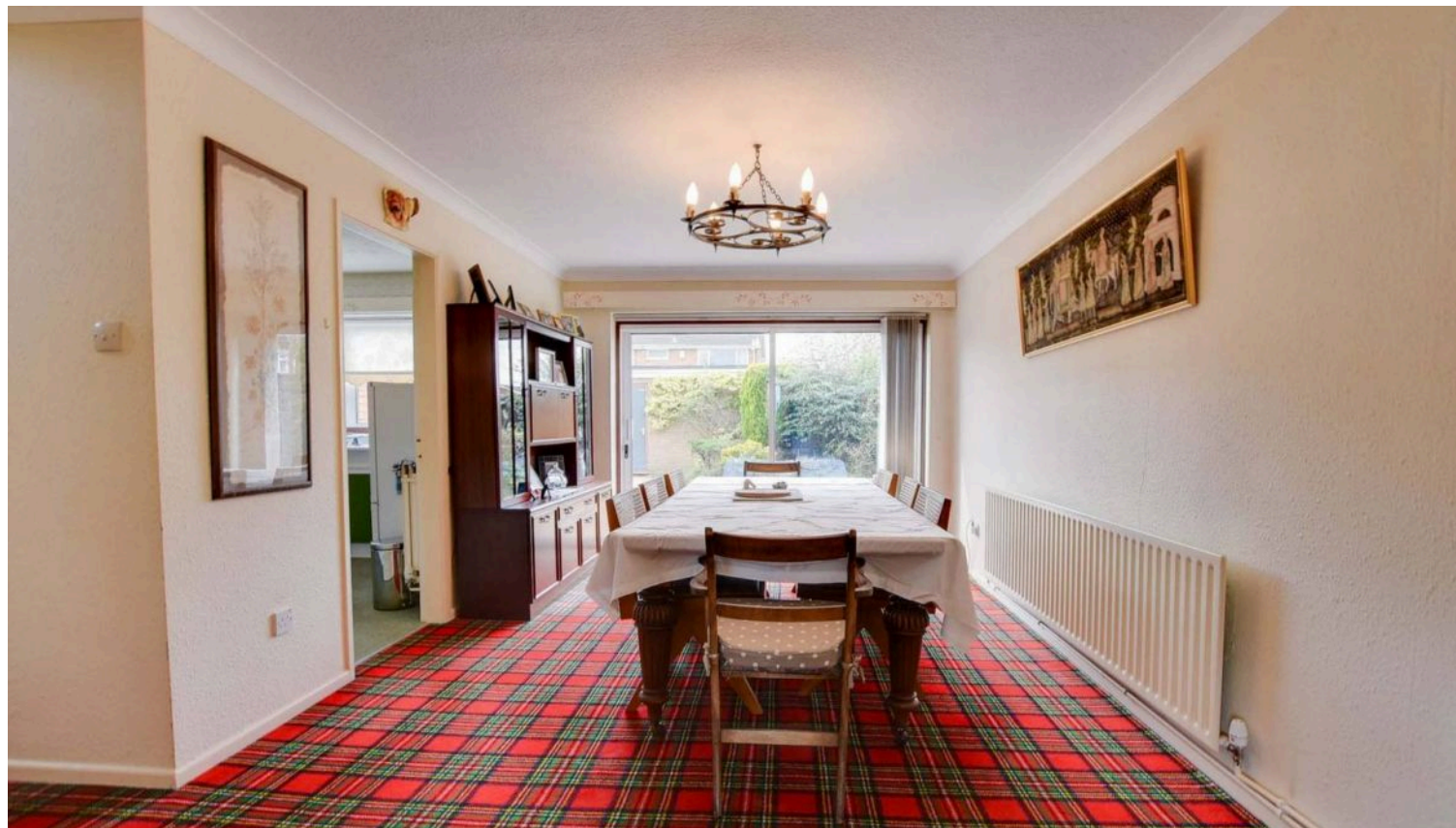
21' 10" x 11' 11" (6.65m x 3.63m)

With double glazed windows to the front elevation, carpet floor, brick chimney breast with gas fire (not tested), two radiators.

Kitchen

11' 4" x 10' 10" (3.45m x 3.30m)

With double glazed window to the rear elevation, double glazed door to the side elevation, carpet floor, wall and base units with work surface over, stainless steel sink and drainer unit, cooker point, plumbing for washing machine, tiled walls, radiator.



First Floor Landing

With double glazed window to the side elevation, storage cupboard housing water tank, radiator.

Bedroom One

11' 11" x 10' 9" (3.63m x 3.28m)

With double glazed window to the front elevation, carpet floor, fitted wardrobes, radiator.

Bedroom Two

12' 1" x 9' 7" (3.68m x 2.92m)

With double glazed window to the front elevation, carpet floor, radiator.

Bedroom Three

11' 7" x 11' 1" (3.53m x 3.38m)

With double glazed window to the rear elevation, carpet floor, fitted wardrobes and vanity unit, radiator.

Bedroom Four

10' 6" x 9' 6" (3.20m x 2.90m)

With double glazed window to the rear elevation, carpet floor, radiator.

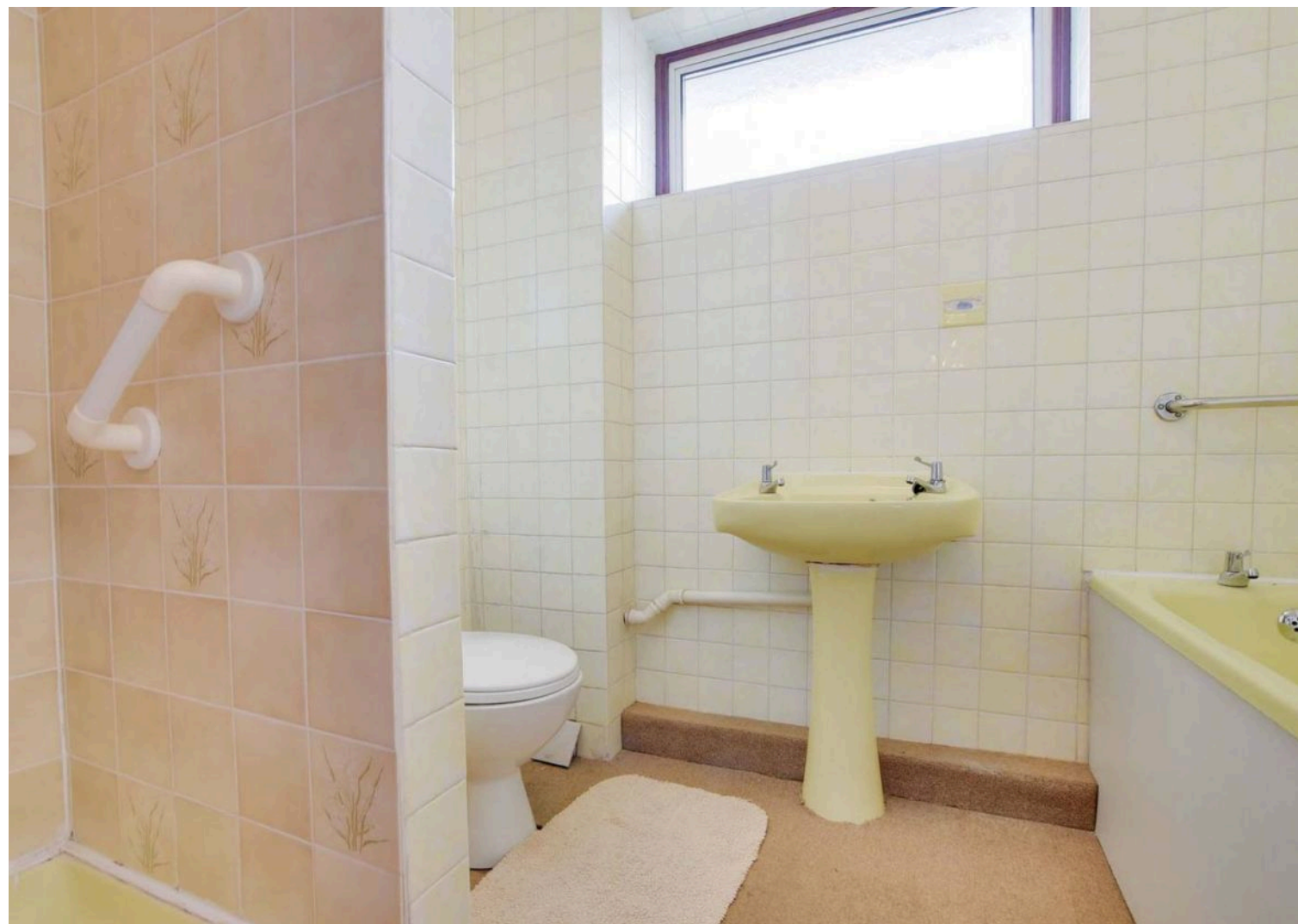
Bathroom

7' 10" x 6' 4" (2.39m x 1.93m)

With double glazed window to the side elevation, carpet floor, bath, walk-in shower cubicle, pedestal wash hand basin, low-level WC, tiled walls, radiator.







**Front Garden**

A corner plot with lawn area, paved pathway, slate areas.

Rear Garden

With paved rear garden with fountain/water features to the center, flowerbeds and shrubs, gate to side access.

Driveway

For two vehicles.

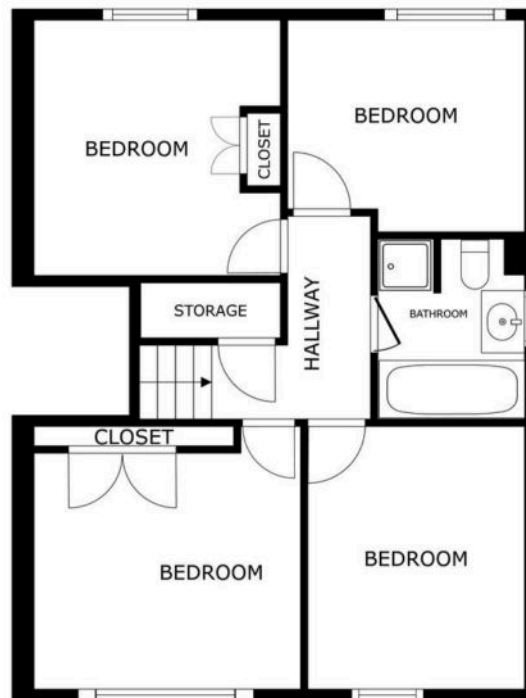
Double Garage

Measuring 17'8" x 17'3". With two up and over doors to the front elevation, double glazed window to the rear elevation, door to the rear garden.



FLOOR 1

SIZES AND DIMENSIONS ARE APPROXIMATE, ACTUAL MAY VARY.



FLOOR 2

SIZES AND DIMENSIONS ARE APPROXIMATE, ACTUAL MAY VARY.





The property is ideally situated for Oadby's highly regarded schools and nearby bus links running into Leicester City Centre with its professional quarters and train station. A wide range of amenities are available along The Parade in nearby Oadby Town Centre, along with three mainstream supermarkets and further leisure/recreational facilities including Leicester Racecourse, University of Leicester Botanic Gardens and Parklands Leisure Centre and Glen Gorse Golf Club.

Council Tax band: E

Tenure: Freehold

EPC Energy Efficiency Rating: D

We'll keep you moving...



We must inform all prospective purchasers that the measurements are taken by an electronic take and are provided as a guide only and they should not be used as accurate measurements. We have not tested any mains services, gas or electric appliances, or fixtures and fittings mentioned in these details, therefore, prospective purchasers should satisfy themselves before committing to purchase. Intending purchasers must satisfy themselves by inspection or otherwise to the correctness of the statements contained in these particulars. Knightsbridge Estate Agents (nor any person in their employment) has any authority to make any representation or warranty in relation to the property. The floor plans are not to scale, and are intended for use as a guide to the layout of the property only. They should not be used for any other purpose. We are required by law to conduct anti-money laundering checks on all those selling or buying a property. Whilst we retain responsibility for ensuring checks and any ongoing monitoring are carried out correctly, the initial checks are carried out on our behalf by Lifetime Legal who will contact you once you have agreed to instruct us in your sale or had an offer accepted on a property you wish to buy. The cost of these checks is £60 (incl. VAT), which covers the cost of obtaining relevant data and any manual checks and monitoring which might be required. This fee will need to be paid by you in advance of us publishing your property (in the case of a vendor) or issuing a memorandum of sale (in the case of a buyer), directly to Lifetime Legal, and is non-refundable. We will receive some of the fee taken by Lifetime Legal to compensate for its role in the provision of these checks.