

Sunnyfield Close, Evington

£375,000

A CHARMING cottage-style bungalow, offering generous outdoor space with a spacious driveway and garage. Tucked away at the end of a peaceful cul-de-sac, this home offers both privacy and comfort.

Council Tax band: C

Tenure: Freehold

EPC Energy Efficiency Rating: D





Entrance Hall

With single glazed front door to the side elevation, carpet floor, storage cupboard, radiator.

Lounge

15' 0" x 11' 11" (4.57m x 3.63m)

With double glazed windows to the front elevation, two double glazed windows to the side elevation, carpet floor, green Eco mini "Ingle-Nook" style fire with brick surround and hearth, radiator.

Kitchen

15' 0" x 8' 4" (4.57m x 2.54m)

With double glazed window to the rear elevation, single glazed door to the side elevation, oak laminate floor, part tiled walls, sink and drainer unit, wall and base units with work surface over, built-in fridge, built-in freezer, inset oven and hob with extractor hood over, stairs to first floor, built-in storage cupboard housing water tank and boiler, space for washing machine, space for dishwasher, radiator.



Bedroom One

13' 5" x 12' 0" (4.09m x 3.66m)

With double glazed windows to the front and side elevations, carpet floor, radiator.

Shower Room

8' 2" x 5' 10" (2.49m x 1.78m)

With double glazed windows to the rear and side elevations, tiled floor, tiled walls, shower cubicle, low-level WC, wash hand basin, radiator.

First Floor Landing

With access to the following rooms:

Bedroom Two

14' 11" x 10' 4" (4.55m x 3.15m)

With double glazed Velux window to the rear elevation, carpet floor, built-in storage cupboard, electric mock wood burner fire with surround and pink marble inlay and hearth, radiator.

Bedroom Three/Study

10' 5" x 5' 10" (3.18m x 1.78m)

Having part restricted head room. With double glazed Velux window to the rear elevation, built-in eaves storage cupboards, carpet floor.

Front Garden

A lovely front garden with paved pathways, flowerbeds and shrubs, slate area, pebbled area, double iron gates leading to front door.

Rear Garden

A further delightful garden with paved pathway and patio area, flowerbeds and shrubs, pebbled area summerhouse, AstroTurf lawn.

Driveway

Tarmac driveway providing off road parking.

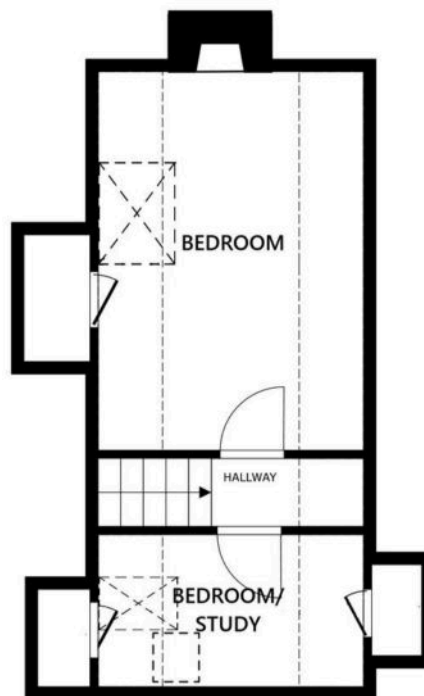
Garage

With up and over door to the front elevation.



FLOOR 1

SIZES AND DIMENSIONS ARE APPROXIMATE, ACTUAL MAY VARY.



FLOOR 2

SIZES AND DIMENSIONS ARE APPROXIMATE, ACTUAL MAY VARY.



We'll keep you moving...



We must inform all prospective purchasers that the measurements are taken by an electronic take and are provided as a guide only and they should not be used as accurate measurements. We have not tested any mains services, gas or electric appliances, or fixtures and fittings mentioned in these details, therefore, prospective purchasers should satisfy themselves before committing to purchase. Intending purchasers must satisfy themselves by inspection or otherwise to the correctness of the statements contained in these particulars. Knightsbridge Estate Agents (nor any person in their employment) has any authority to make any representation or warranty in relation to the property. The floor plans are not to scale, and are intended for use as a guide to the layout of the property only. They should not be used for any other purpose. We are required by law to conduct anti-money laundering checks on all those selling or buying a property. Whilst we retain responsibility for ensuring checks and any ongoing monitoring are carried out correctly, the initial checks are carried out on our behalf by Lifetime Legal who will contact you once you have agreed to instruct us in your sale or had an offer accepted on a property you wish to buy. The cost of these checks is £60 (incl. VAT), which covers the cost of obtaining relevant data and any manual checks and monitoring which might be required. This fee will need to be paid by you in advance of us publishing your property (in the case of a vendor) or issuing a memorandum of sale (in the case of a buyer), directly to Lifetime Legal, and is non-refundable. We will receive some of the fee taken by Lifetime Legal to compensate for its role in the provision of these checks.