

Erringtons Close, Oadby

£290,000

If you are looking for a FOUR BEDROOM property situated in the Glen Rise/Oadby areas then look no further. This beautifully designed THREE STOREY town house could be the perfect opportunity you seek.





Entrance Hall

With wooden floor, stairs to first floor, radiator.

Ground Floor WC

6' 3" x 2' 7" (1.91m x 0.79m)

With vinyl floor, low-level WC, wash hand basin, part tiled walls, radiator.

Kitchen Diner

15' 8" x 11' 8" (4.78m x 3.56m)

With double glazed French doors and window to the rear elevation, part wooden floor, part tiled floor, wall and base units with work surface over, one and a half bowl sink and drainer unit, fitted oven and hob, extractor hood, space for under counter fridge, space for under counter freezer, space for washing machine, space part tiled walls, radiator.



First Floor Landing

With double glazed window to the front elevation, carpet floor, stairs to second floor, radiator.

Lounge

15' 8" x 11' 9" (4.78m x 3.58m)

With two double glazed windows to the rear elevation, carpet floor, gas fire with surround and hearth, two radiators.



Bathroom

8' 10" x 5' 7" (2.69m x 1.70m)

With vinyl floor, part tiled walls, bath, wash hand basin, low-level WC, wall mounted towel rail/radiator.

Bedroom Three

9' 11" x 8' 11" (3.02m x 2.72m)

With double glazed window to the front elevation, carpet floor, radiator.

Second Floor Landing

With carpet floor, storage cupboard, loft access, radiator.

Bedroom One

13' 11" x 9' 6" (4.24m x 2.90m)

Measurement up to wardrobes. With double glazed window to the front elevation, fitted wardrobes, carpet floor, radiator.

En-Suite

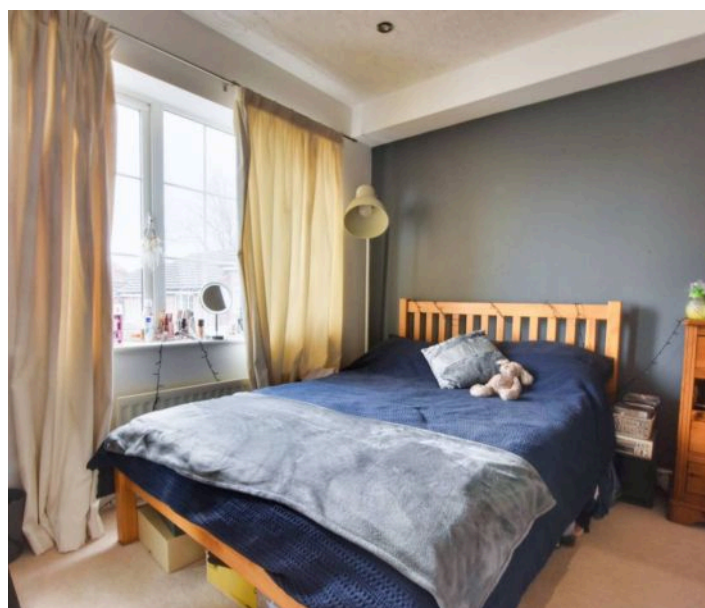
6' 7" x 5' 11" (2.01m x 1.80m)

With double glazed window to the front elevation vinyl floor, wash hand basin with storage below, low-level WC, shower cubicle, radiator.

Bedroom Two

11' 10" x 9' 6" (3.61m x 2.90m)

With double glazed window to the rear elevation, carpet floor, radiator.









Bedroom Four

8' 7" x 5' 11" (2.62m x 1.80m)

With double glazed window to the rear elevation, carpet floor, radiator.

Front Garden

Paved pathway.

Rear Garden

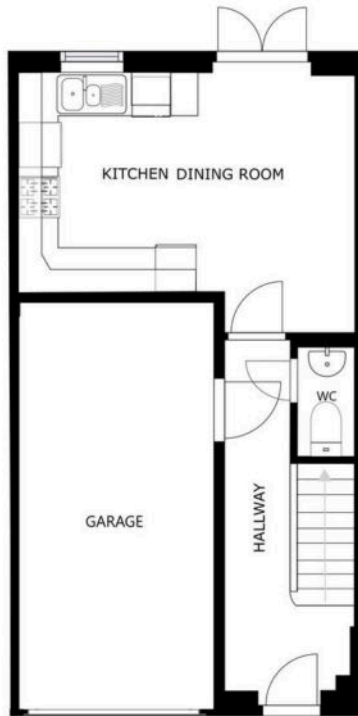
With laved patio seating area, lawn, fenced and walled perimeter.

Driveway

Providing off road parking.

Garage

Measuring 15'3" x 9'2". With up and over door to the front elevation.



FLOOR 1

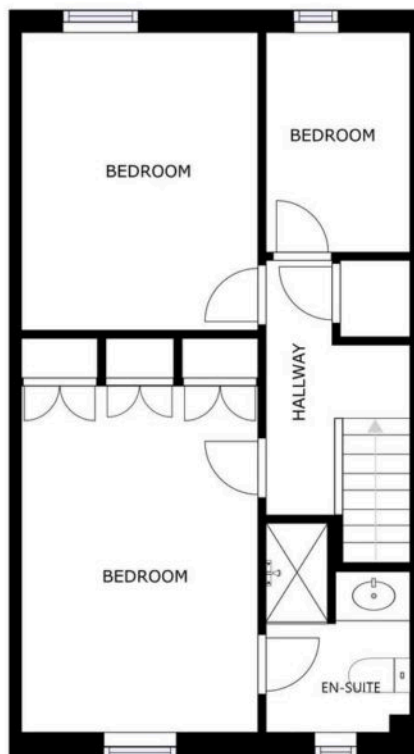
SIZES AND DIMENSIONS ARE APPROXIMATE, ACTUAL MAY VARY



FLOOR 2

SIZES AND DIMENSIONS ARE APPROXIMATE, ACTUAL MAY VARY





FLOOR 3

SIZES AND DIMENSIONS ARE APPROXIMATE, ACTUAL MAY VARY



Council Tax band: D

Tenure: Freehold

EPC Energy Efficiency Rating: C

We'll keep you moving...



We must inform all prospective purchasers that the measurements are taken by an electronic take and are provided as a guide only and they should not be used as accurate measurements. We have not tested any mains services, gas or electric appliances, or fixtures and fittings mentioned in these details, therefore, prospective purchasers should satisfy themselves before committing to purchase. Intending purchasers must satisfy themselves by inspection or otherwise to the correctness of the statements contained in these particulars. Knightsbridge Estate Agents (nor any person in their employment) has any authority to make any representation or warranty in relation to the property. The floor plans are not to scale, and are intended for use as a guide to the layout of the property only. They should not be used for any other purpose. We are required by law to conduct anti-money laundering checks on all those selling or buying a property. Whilst we retain responsibility for ensuring checks and any ongoing monitoring are carried out correctly, the initial checks are carried out on our behalf by Lifetime Legal who will contact you once you have agreed to instruct us in your sale or had an offer accepted on a property you wish to buy. The cost of these checks is £60 (incl. VAT), which covers the cost of obtaining relevant data and any manual checks and monitoring which might be required. This fee will need to be paid by you in advance of us publishing your property (in the case of a vendor) or issuing a memorandum of sale (in the case of a buyer), directly to Lifetime Legal, and is non-refundable. We will receive some of the fee taken by Lifetime Legal to compensate for its role in the provision of these checks.