



Rosemead Drive, Oadby

Guide Price £280,000

MODERN METHOD AUCTION - Spacious Three-Bedroom Semi-Detached Home in Oadby, featuring Lounge-Diner, Fitted Kitchen, Off-Road Parking, Garage, and Stunning Garden with Patio, Lawn, and Log Cabin/Summer House.
Council Tax band: C

Tenure: Leasehold

EPC Rating: C





Entrance Hall

With door to the front elevation, double glazed window to the side elevation, laminate flooring, understairs storage, and white panelled walling to the stairs.

Lounge Diner

28' 10" x 13' 1" (8.79m x 3.99m)

With a double-glazed bay window to the front elevation, double-glazed sliding patio doors to the rear elevation, Oak engineered wood-panelled flooring, gas fire with surround and two radiators.

Kitchen

10' 0" x 8' 6" (3.05m x 2.59m)

With a double-glazed window to the rear elevation, door to the side elevation, wooden flooring, a sink and drainer unit with a range of wall and base units with work surfaces over, space for freestanding cooker, extractor fan, space for a fridge, space for a dishwasher/washing machine and boiler.



Landing

With a double-glazed window to the side elevation and carpeting.

Bedroom One

12' 0" x 10' 5" (3.66m x 3.18m)

With a double-glazed window to the front elevation, fitted wardrobes, carpeting and a radiator.

Bedroom Two

12' 9" x 8' 7" (3.89m x 2.62m)

With a double-glazed window to the rear elevation, wash hand basin, carpeting and radiator.

Bedroom Three

9' 0" x 8' 8" (2.74m x 2.64m)

With a double-glazed window to the front elevation, carpeting, radiator.

Bathroom

6' 5" x 5' 6" (1.96m x 1.68m)

With a double-glazed window to the rear elevation, herringbone patterned flooring, tiled walls, bath with shower over, floating wall-mounted wash hand basin with storage, WC and a heated towel rail.

External Utility

With room for freestanding washing machine, dryer and freezer, power and lighting, WC area to the side.

Rear Garden

A beautiful rear garden with patio seating area, feature pond, lawn, well-maintained planted borders, a wood-built log cabin/summer house and a decking area.

Driveway 3 Vehicles

Block paved driveway with space for three vehicles.

Carport 1 Vehicle

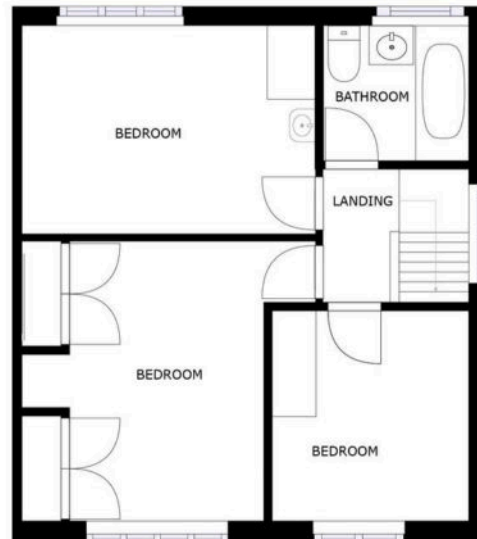
Garage 1 Vehicle

Garage to the rear elevation (limited access)



FLOOR 1

SIZES AND DIMENSIONS ARE APPROXIMATE, ACTUAL MAY VARY.



FLOOR 2

SIZES AND DIMENSIONS ARE APPROXIMATE, ACTUAL MAY VARY.



We'll keep you moving...



We must inform all prospective purchasers that the measurements are taken by an electronic take and are provided as a guide only and they should not be used as accurate measurements. We have not tested any mains services, gas or electric appliances, or fixtures and fittings mentioned in these details, therefore, prospective purchasers should satisfy themselves before committing to purchase. Intending purchasers must satisfy themselves by inspection or otherwise to the correctness of the statements contained in these particulars. Knightsbridge Estate Agents (nor any person in their employment) has any authority to make any representation or warranty in relation to the property. The floor plans are not to scale, and are intended for use as a guide to the layout of the property only. They should not be used for any other purpose. We are required by law to conduct anti-money laundering checks on all those selling or buying a property. Whilst we retain responsibility for ensuring checks and any ongoing monitoring are carried out correctly, the initial checks are carried out on our behalf by Lifetime Legal who will contact you once you have agreed to instruct us in your sale or had an offer accepted on a property you wish to buy. The cost of these checks is £60 (incl. VAT), which covers the cost of obtaining relevant data and any manual checks and monitoring which might be required. This fee will need to be paid by you in advance of us publishing your property (in the case of a vendor) or issuing a memorandum of sale (in the case of a buyer), directly to Lifetime Legal, and is non-refundable. We will receive some of the fee taken by Lifetime Legal to compensate for its role in the provision of these checks.