



## Oakside Crescent, Evington

Offers Over £325,000

A DETACHED bungalow offered to the market with NO UPWARD CHAIN. Outside enjoys a driveway providing off road parking, GARAGE and an established rear garden.

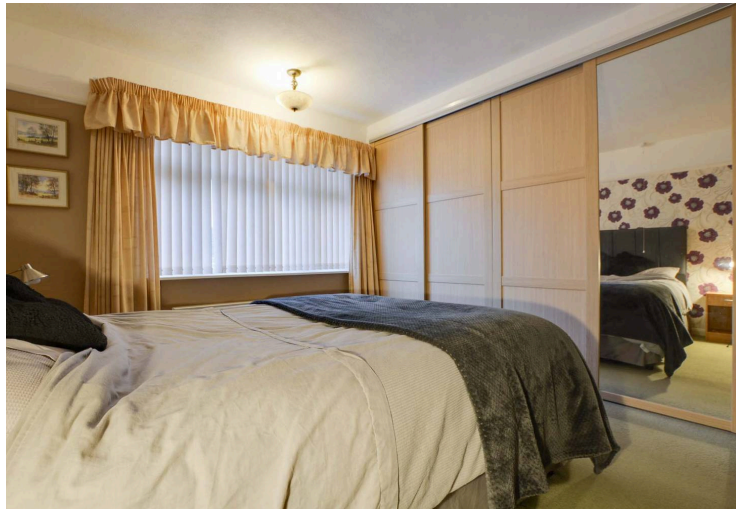
Tenure: Freehold

Council Tax band: C

EPC Energy Efficiency Rating: D







### **Entrance Porch**

With access leading to entrance hall.

### **Entrance Hall**

With wood effect floor, built-in cloaks cupboard, loft access, radiator.

### **Lounge Diner**

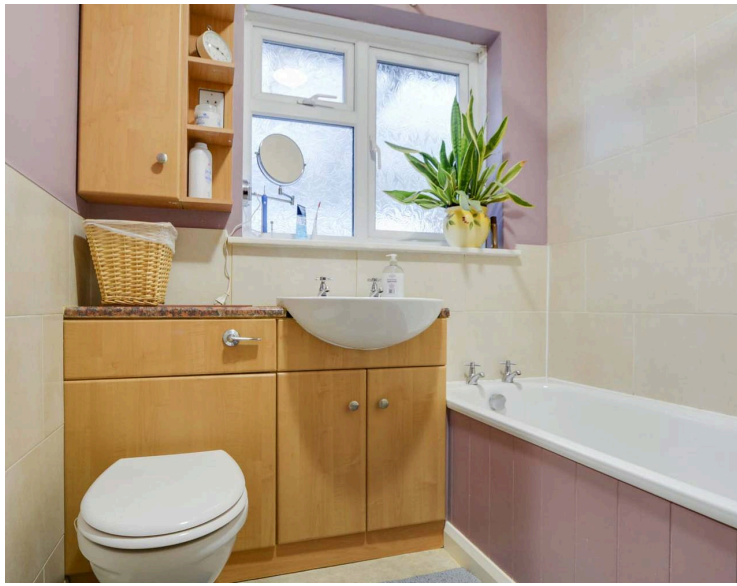
18' 4" x 15' 10" (5.59m x 4.83m)

With double glazed windows to the rear and side elevations, double glazed French door leading to rear garden, chimney breast with living flame gas fire, marble surround and hearth, ceiling coving, TV point, radiator.

### **Kitchen**

11' 0" x 10' 1" (3.35m x 3.07m)

With double glazed window to the rear elevation, a range of wall and base units with work surface over, stainless steel sink, drainer and mixer tap, inset four ring gas hob and oven, extractor hood, plumbing for dishwasher, space for fridge, door leading to utility area.



### **Utility Area**

6' 8" x 6' 2" (2.03m x 1.88m)

With skylight window, window to the side elevation, door to rear garden, base units with work surface over, plumbing for washing machine, wall mounted boiler.

### **Bedroom One**

12' 11" x 11' 10" (3.94m x 3.61m)

With double glazed window to the front elevation, built-in sliding door wardrobes, picture rail, radiator.

### **Bedroom Two**

11' 0" x 9' 5" (3.35m x 2.87m)

With double glazed window to the front elevation, picture rail, radiator.

### **Bathroom**

7' 10" x 6' 10" (2.39m x 2.08m)

With double glazed window to the side elevation, bath with shower over, low-level WC, wash hand basin with storage below, part tiled walls, chrome ladder style radiator.

### **Rear Garden**

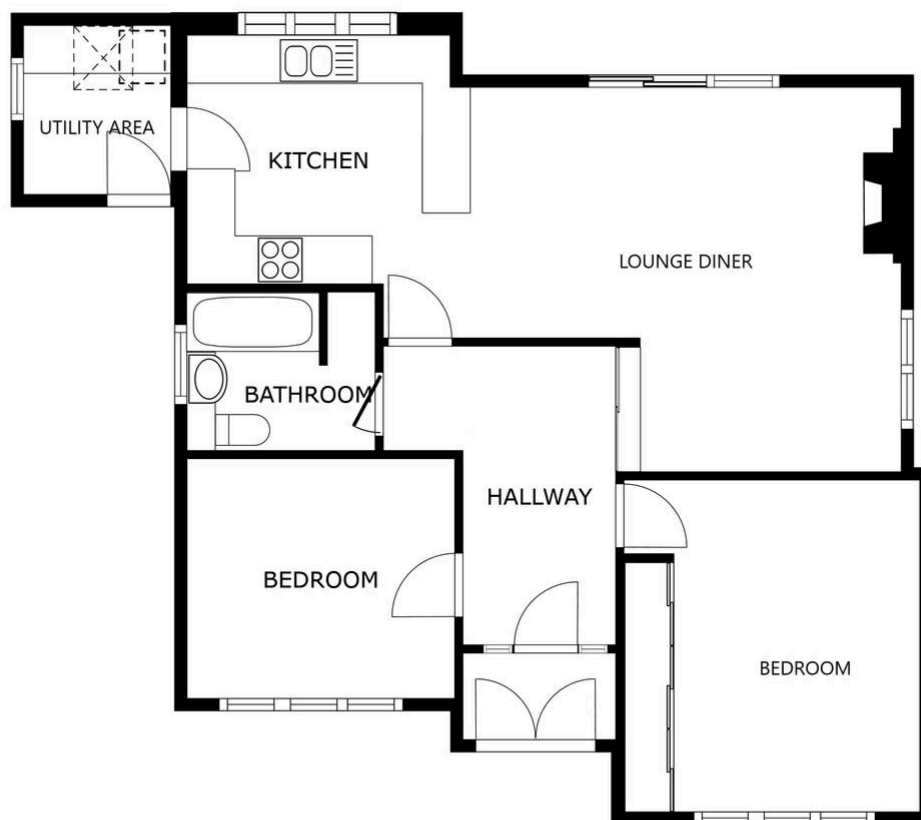
With paved patio seating area, lawn, flowerbeds and shrubs, fencing to perimeter.

### **Parking** 2 Vehicles

Paved frontage providing off road parking.

### **Garage** 1 vehicle





FLOOR PLAN

SIZES AND DIMENSIONS ARE APPROXIMATE, ACTUAL MAY VARY.



**We'll keep you moving...**



We must inform all prospective purchasers that the measurements are taken by an electronic tape and are provided as a guide only and they should not be used as accurate measurements. We have not tested any mains services, gas or electric appliances, or fixtures and fittings mentioned in these details, therefore, prospective purchasers should satisfy themselves before committing to purchase. Intending purchasers must satisfy themselves by inspection or otherwise to the correctness of the statements contained in these particulars. Knightsbridge Estate Agents & valuers (nor any person in their employment) has any authority to make any representation or warranty in relation to the property.' The floor plans are not to scale, and are intended for use as a guide to the layout of the property only. They should not be used for any other purpose. Similarly, the plans are not designed to represent the actual décor found at the property in respect of flooring, wall coverings or fixtures and fittings.