



Havelock Gardens, Thurmaston

£180,000

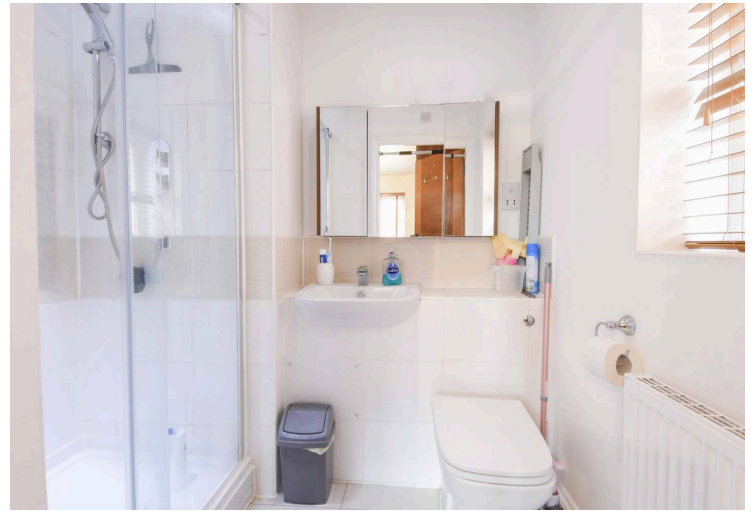
A two bedroom GROUND FLOOR flat built in 2016 providing ideal ground floor living. Parking is available via communal parking and visitors parking situated within the SECURE communal grounds. Viewing is highly recommended.

Council Tax band: B

Tenure: Leasehold

EPC Energy Efficiency Rating: C





Entrance Hall

With storage cupboard housing plumbing for washing machine, radiator.

Open Plan Living Kitchen Breakfast Room

21' 2" x 20' 8" (6.45m x 6.30m)

With two double glazed windows to the side elevation, part tiled floor, part tiled walls, wall and base units with work surface over, stainless steel sink and drainer, built-in oven and gas hob with extractor hood over, built-in fridge freezer, two radiators.

Bedroom One

12' 5" x 10' 0" (3.78m x 3.05m)

With double glazed window to the side elevation, fitted wardrobes, radiator.



En-Suite

6' 10" x 5' 3" (2.08m x 1.60m)

With double glazed window to the rear elevation, tiled floor, part tiled walls, shower cubicle, low-level WC, wash hand basin, radiator.

Bedroom Two

10' 3" x 8' 6" (3.12m x 2.59m)

Measurement into wardrobes. With double glazed window to the side elevation, fitted wardrobes, storage cupboard, radiator.

Bathroom

7' 3" x 6' 6" (2.21m x 1.98m)

With bath, low-level WC, wash hand basin, part tiled walls, tiled floor, radiator.

Communal Garden

Accessed via a gate.

Parking

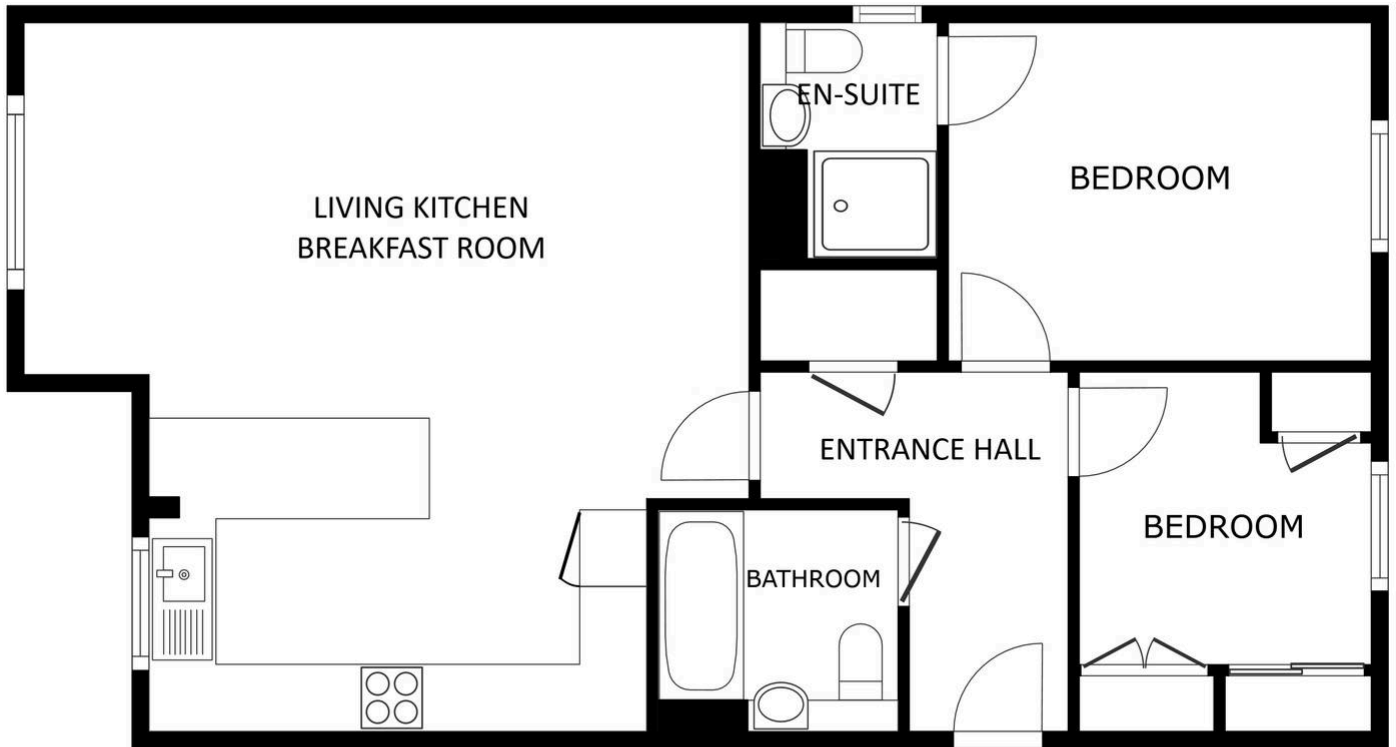
Communal and visitor parking.

Lease Information

117 Years Remaining on the lease

£1300 per year on Service Charges

£100 Per Year on Ground Rent



FLOOR PLAN

SIZES AND DIMENSIONS ARE APPROXIMATE, ACTUAL MAY VARY.



We'll keep you moving...



We must inform all prospective purchasers that the measurements are taken by an electronic tape and are provided as a guide only and they should not be used as accurate measurements. We have not tested any mains services, gas or electric appliances, or fixtures and fittings mentioned in these details, therefore, prospective purchasers should satisfy themselves before committing to purchase. Intending purchasers must satisfy themselves by inspection or otherwise to the correctness of the statements contained in these particulars. Knightsbridge Estate Agents & valuers (nor any person in their employment) has any authority to make any representation or warranty in relation to the property. The floor plans are not to scale, and are intended for use as a guide to the layout of the property only. They should not be used for any other purpose. Similarly, the plans are not designed to represent the actual décor found at the property in respect of flooring, wall coverings or fixtures and fittings.