

Quinton Rise, Oadby

Offers Over £475,000

A GOOD SIZE FOUR BEDROOM detached property suitable for a multi generational family. The property features a generous lounge with open aspect to the dining area and kitchen. The front provides ample off road parking giving access to a rear garden.





Entrance Hall

With double glazed window to the front elevation, stairs to first floor, electric heater, radiator.

Study

9' 7" x 8' 4" (2.92m x 2.54m)

With double glazed window to the front elevation, wall units, radiator.

Ground Floor Bathroom

10' 3" x 6' 2" (3.12m x 1.88m)

With two double glazed windows to the side elevation, part tiled walls, tiled floor, bath, wash hand basin with storage below, low-level WC, radiator.

Bedroom Four

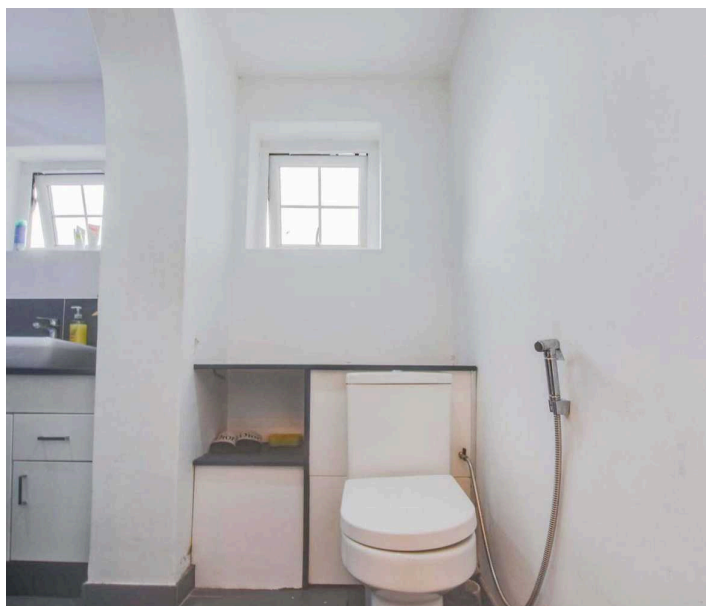
12' 1" x 11' 7" (3.68m x 3.53m)

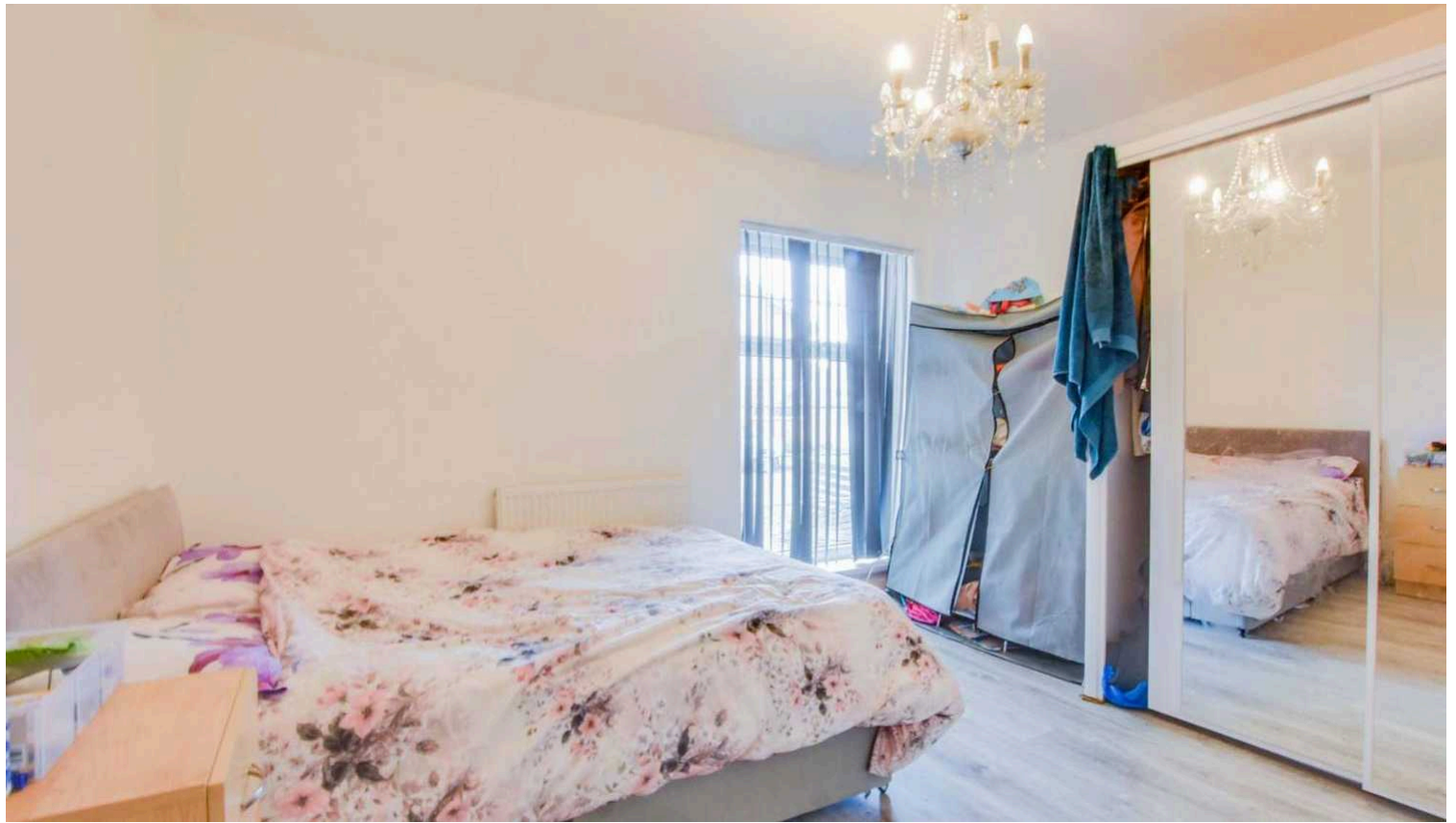
With double glazed window to the front elevation, laminate floor, radiator.

Kitchen

18' 0" x 12' 9" (5.49m x 3.89m)

With two double glazed windows to the side elevation, door to the side elevation, wall and base units with work surface over, sink and drainer unit, inset double oven, hob with extractor hood over, plumbing for washing machine, tiled floor, pantry cupboard, open aspect leading to dining area.





Dining Area

12' 2" x 11' 11" (3.71m x 3.63m)

With double glazed patio doors to the rear elevation, double glazed window to the side elevation, tiled floor, radiator, open aspect leading to the lounge.

Lounge

18' 7" x 18' 4" (5.66m x 5.59m)

With double glazed windows to the rear and side elevations, fitted TV wall mount, three radiators.

First Floor Landing

With loft access, storage cupboard.

Bedroom One

13' 9" x 11' 1" (4.19m x 3.38m)

With double glazed window to the front elevation, two built-in storage cupboards, radiator.

Bedroom Two

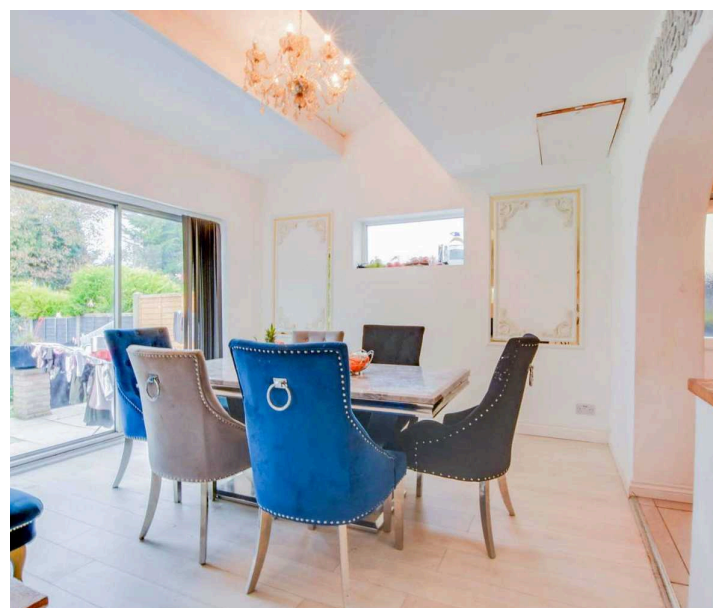
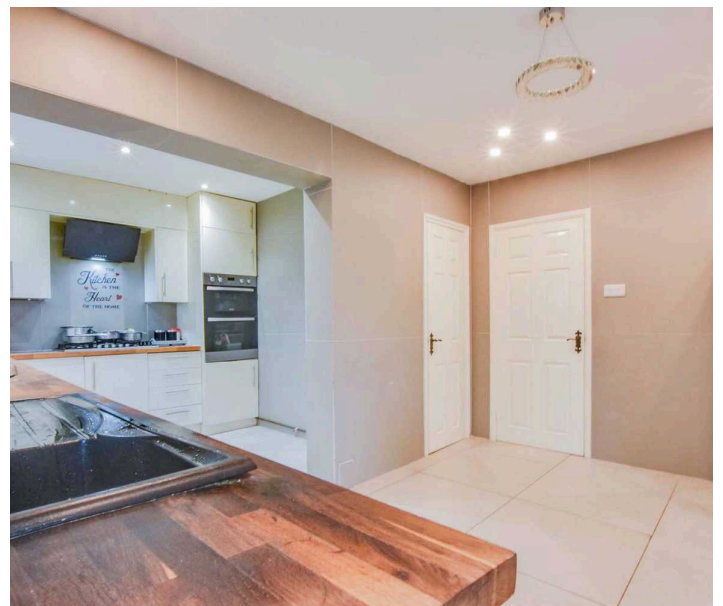
9' 5" x 9' 5" (2.87m x 2.87m)

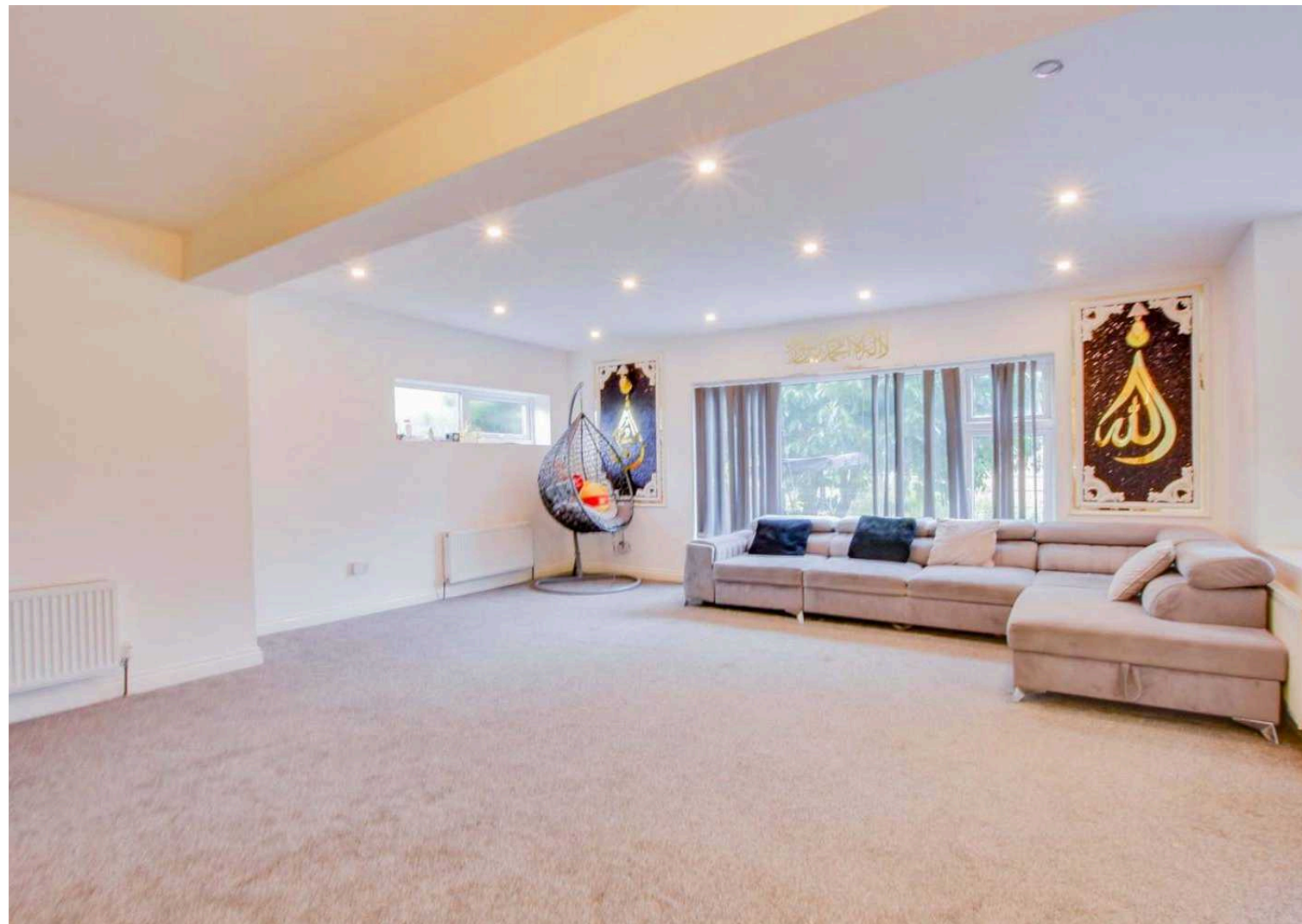
With double glazed windows to the front and side elevations, storage cupboard, radiator.

Bedroom Three

18' 0" x 6' 4" (5.49m x 1.93m)

With double glazed window and door to the rear elevation, storage cupboard, two radiators.









Bathroom

7' 10" x 5' 6" (2.39m x 1.68m)

With double glazed windows to the side elevation, tiled walls, tiled floor, bath, low-level WC, wash hand basin, towel rail/radiator.

Front Garden

Paved and gravelled frontage.

Rear Garden

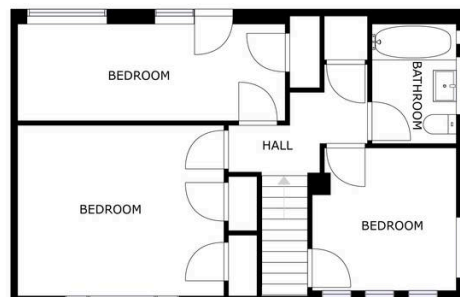
With paved patio area, lawn, shrubs, tree.

Driveway

Providing off road parking.



FLOOR 1



FLOOR 1





The property is ideally situated for Oadby's highly regarded schools and nearby bus links running into Leicester City Centre with its professional quarters and train station. A wide range of amenities are available along The Parade in nearby Oadby Town Centre, along with three mainstream supermarkets and further leisure/recreational facilities including Leicester Racecourse, University of Leicester Botanic Gardens and Parklands Leisure Centre and Glen Gorse Golf Club.

Council Tax band: E

Tenure: Freehold

EPC Energy Efficiency Rating: D

EPC Environmental Impact Rating: E

We'll keep you moving...



We must inform all prospective purchasers that the measurements are taken by an electronic take and are provided as a guide only and they should not be used as accurate measurements. We have not tested any mains services, gas or electric appliances, or fixtures and fittings mentioned in these details, therefore, prospective purchasers should satisfy themselves before committing to purchase. Intending purchasers must satisfy themselves by inspection or otherwise to the correctness of the statements contained in these particulars. Knightsbridge Estate Agents (nor any person in their employment) has any authority to make any representation or warranty in relation to the property. The floor plans are not to scale, and are intended for use as a guide to the layout of the property only. They should not be used for any other purpose. We are required by law to conduct anti-money laundering checks on all those selling or buying a property. Whilst we retain responsibility for ensuring checks and any ongoing monitoring are carried out correctly, the initial checks are carried out on our behalf by Lifetime Legal who will contact you once you have agreed to instruct us in your sale or had an offer accepted on a property you wish to buy. The cost of these checks is £60 (incl. VAT), which covers the cost of obtaining relevant data and any manual checks and monitoring which might be required. This fee will need to be paid by you in advance of us publishing your property (in the case of a vendor) or issuing a memorandum of sale (in the case of a buyer), directly to Lifetime Legal, and is non-refundable. We will receive some of the fee taken by Lifetime Legal to compensate for its role in the provision of these checks.